

## 1986-1995 Suzuki Samurai Aluminum Rear Upper Shock Mount by Low Range Off Road (SKU# SSP-RUSM)

### Installation Instructions



**CAUTION:** Safety glasses should be worn at all times when working with vehicles and related tools and equipment.



#### Suggested Tools:

- Socket: 17 mm, 3/4 inch
- Ratchet
- Torque wrench
- Angle Girder with a flap disc
- Threadlocker® (supplied)

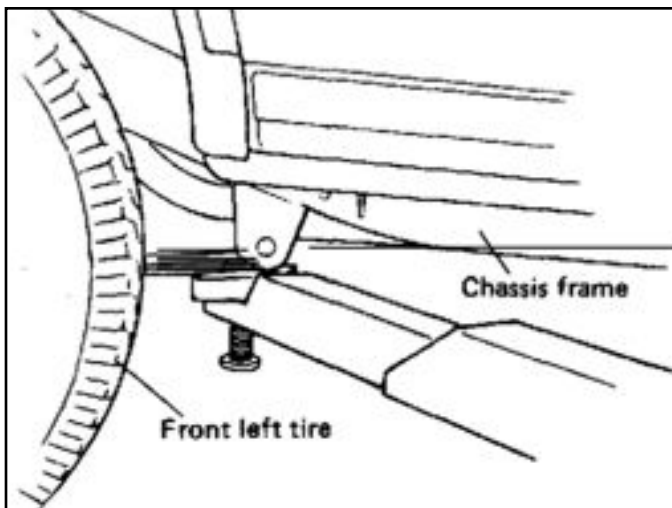
**FOR ADDITIONAL COPIES OF THESE AND OTHER INSTRUCTIONS GO TO:**  
[www.lowrangeoffroad.com](http://www.lowrangeoffroad.com) and click on the "INSTRUCTIONS" tab.

## Lifting and Supporting the Vehicle

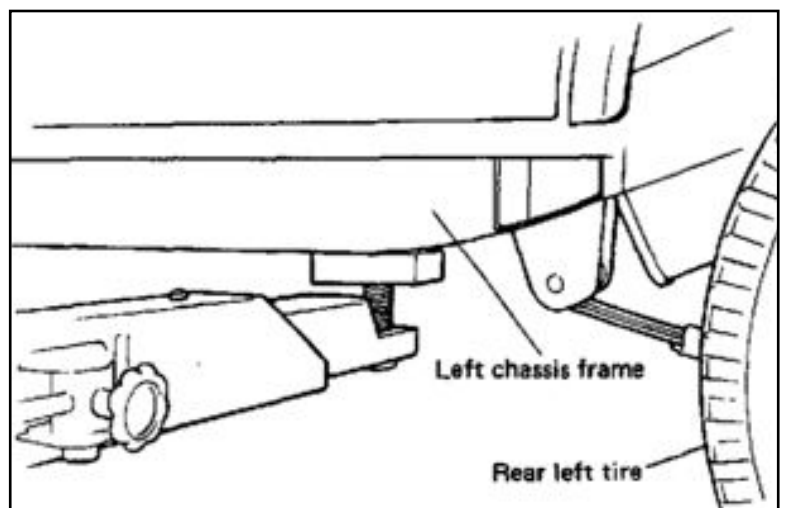


### Lifting Option 1

Lift and support the vehicle on a twin post, frame contact, lift.



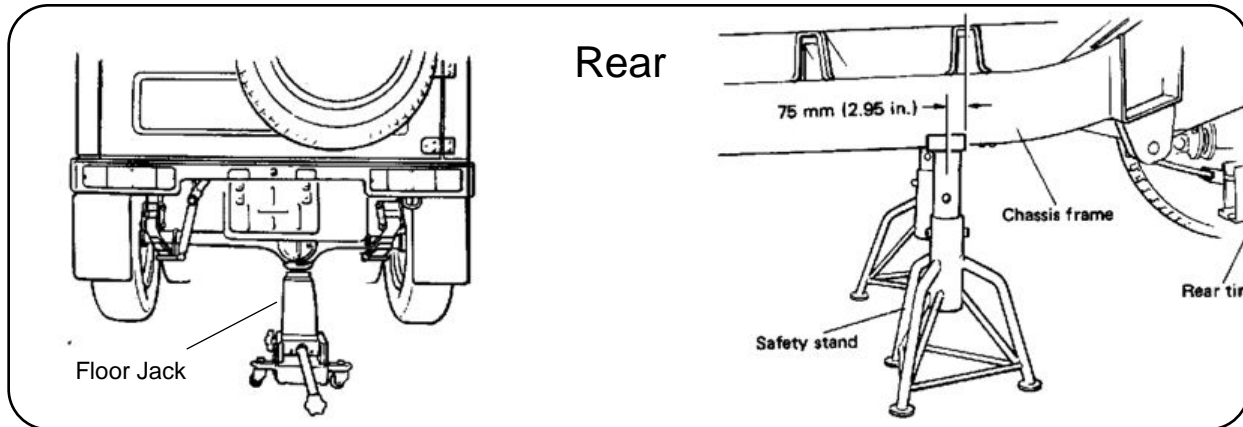
Front Positioning



Rear Positioning

## Lifting Option 2

Lift the vehicle with a floor jack and support it on safety stands.



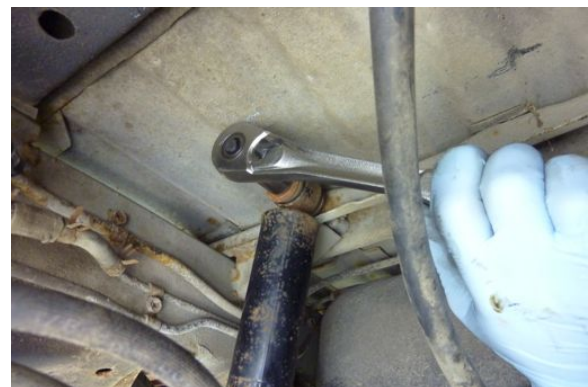
## Lifting Option 3

This Job could easily be done with the wheels on the ground.



### Tech Tip

When working on suspension, brakes or drive train parts it is a good idea to spray all fasteners with penetrating oil a day ahead. If not done a day ahead, an hour or even minutes before is helpful.



### Step 1

Remove the shock from the upper shock mount by removing the nut using a 17 mm socket.





## Step 2

Remove the washer and the rubber bushing from the mount.

Note: If you can't remove the outer bushing it will come out with the shock.



## Step 3

Remove the shock, bushing and washer from the mount.



## Step 4

Repeat steps 1 through 3 on the other side.



## Step 5

Position the LROR Aluminum Upper Shock Mount onto the factory shock mount studs.



### Step 6

Apply threadlocker on the threads of the nut and install it on the factory shock stud.



### Step 7

Repeat Step 6 on the driver side.



### Step 8

Torque both of the nuts to 25.5 - 39.5 ft lbs.



### Step 9

Test fit the bolt in the shock to make sure it fits properly. You may need to remove or add a sleeve.



### Tech tip

If the shock doesn't fit we have found it helpful to remove a little of the bushing from the shock with either a grinder or a sander.



### Step 10

Install the shock.

Note: select the position that best meets your needs.



### Step 11

Apply the supplied threadlocker onto the threads. Attach the shock with the supplied bolt and torque to 15 ft. lbs (or 180 in. lbs.)



### Step 12

Repeat steps 9 though 11 on the driver side.





Congratulations you are now done with the upper shock mount.



As always, If you experience any difficulty during the installation of this product please contact Low Range Off-Road Technical Support at 801-805-6644 M-F 7:30am-5:30pm MST. Thank you for purchasing from Low Range Off-Road.



These instructions are designed as a general installation guide. Installation of many Low Range Off-Road products require specialized skills such as metal fabrication, welding and mechanical trouble shooting. If you have any questions or are unsure about how to proceed, please contact our shop at 801-805-6644 or seek help from a competent fabricator. Using fabrication tools such as welders, torches and grinders can cause serious bodily harm and death. Please operate equipment carefully and observe proper safety procedures.

Rock crawling and off-road driving are inherently dangerous activities. Some modifications will adversely affect the on-road handling characteristics of your vehicle. All products sold by Low Range Off-Road are sold for off road use only. Any other use or application is the responsibility of the purchaser and/or user. Some modifications and installation of certain aftermarket parts may under certain circumstances void your original dealer warranty. Modification of your vehicle may create dangerous conditions, which could cause roll-overs resulting in serious bodily injury or death. Buyers and users of these products hereby expressly assume all risks associated with any such modifications and use.

Revised 10/24/13© Copyright 2013 Low Range Off-Road, LC All Rights Reserved

