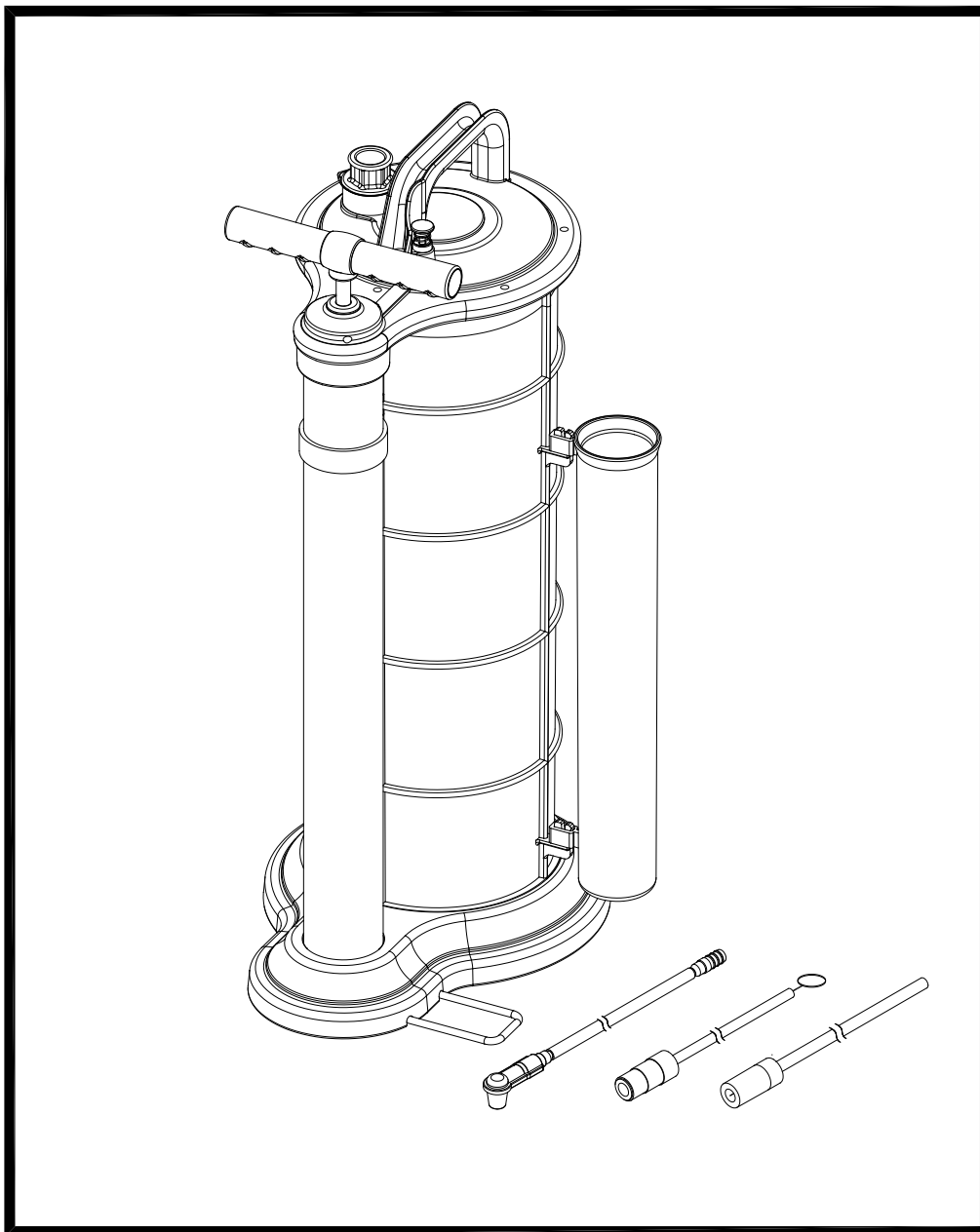


OPERATING INSTRUCTIONS AND PART MANUAL



555-23560

**9 LITER MANUAL FLUID EXTRACTOR**



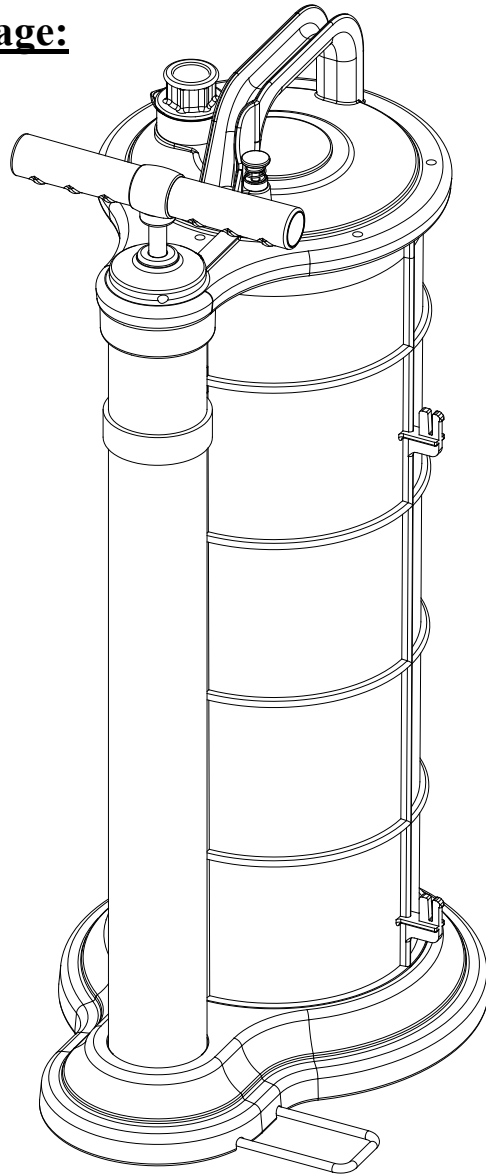
**CAREFULLY READ THIS MANUAL BEFORE OPERATING THE UNIT**



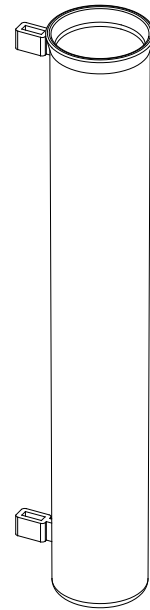
**WARNING:** Please read all instructions and warnings carefully before use

- Do not use the unit with gasoline.
- For security reasons, do not use the unit to extract or store dangerous chemicals, poison, acid, alkaloid, or solvents.
- Do not use the unit to extract, siphon or store petroleum or other highly inflammable liquids.
- Do not throw, drop or mishandle the unit.
- Do not disassemble, tamper with or modify the unit for any other purpose than what it was originally intended for.
- Do not store either the unit or suction tubes near or in areas of high temperatures, direct sunlight, rain or snow.
- The unit must be instantly, drained, washed and cleaned after each use.

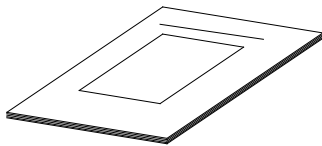
**Contents of Package:**



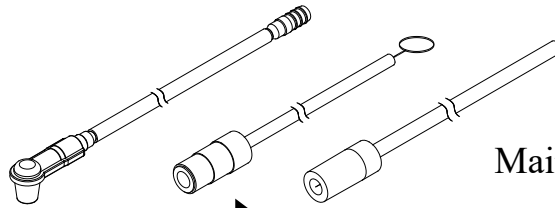
Extractor Unit



Tube Storage Unit



Instructions Manual

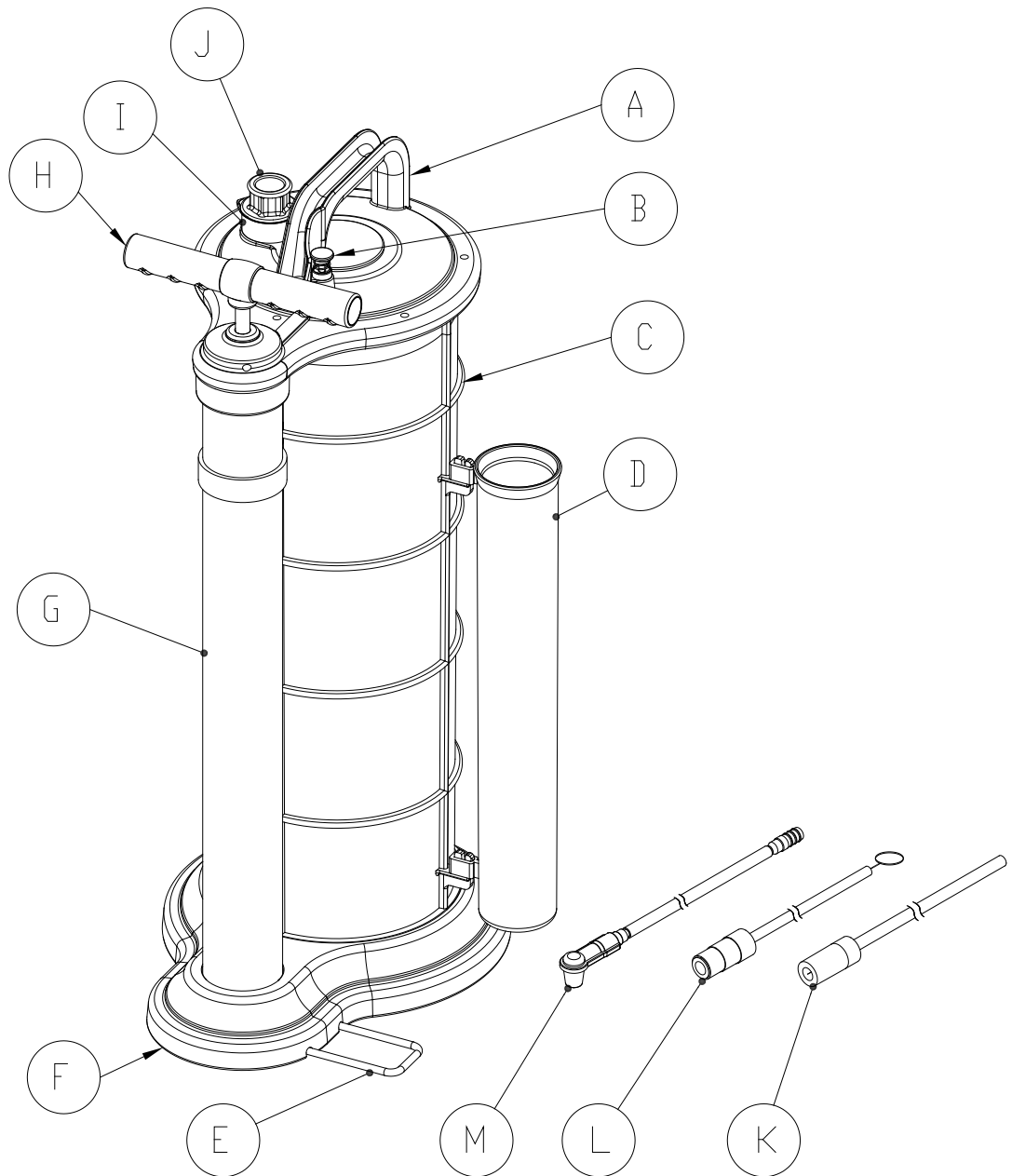


Brake Tube With Rubber Fitting

Extracting Tube

Main Suction Tube

## Extractor Unit Components



- A. Cover Housing
- B. Release Button
- C. Reservoir Tank
- D. Tube Storage Unit
- E. Footboard
- F. Base
- G. Hand Pump
- H. Handle
- I. Fluid Outlet Housing
- J. Fluid Inlet Coupler
- K. Main Suction Tube
- L. Extracting Tube
- M. Brake Tube W/ Rubber Fitting

# 9 LITER MANUAL FLUID EXTRACTOR OPERATING INSTRUCTIONS

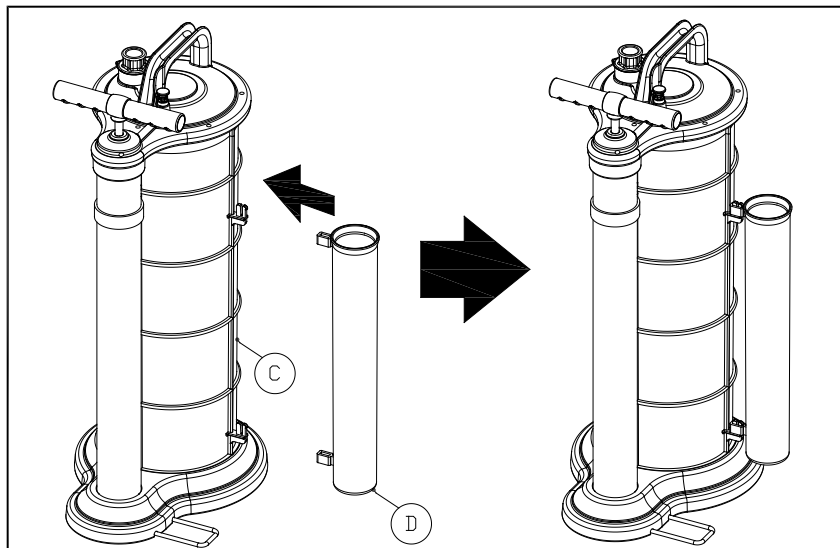
## Notes:

When using the Manual Fluid Extractor unit to extract engine oil, first you need to make sure the vehicle is level, and then run the engine for about 5 minutes to warm the oil and allow any sludge or contamination within the oil to mix.



## Operating Steps:

1. To set up the Tube Storage Unit ( D ) into the two hooks of Reservoir Tank ( C )



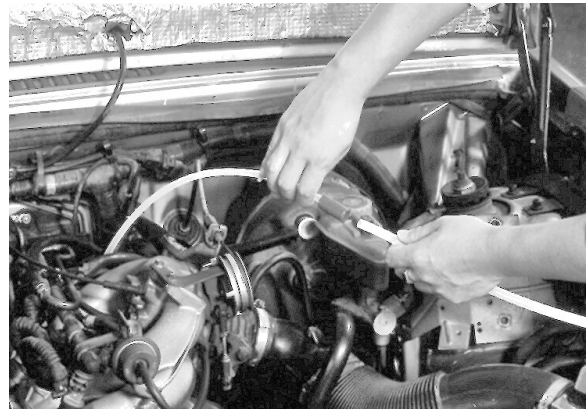
2. Remove the oil dipstick from the engine.



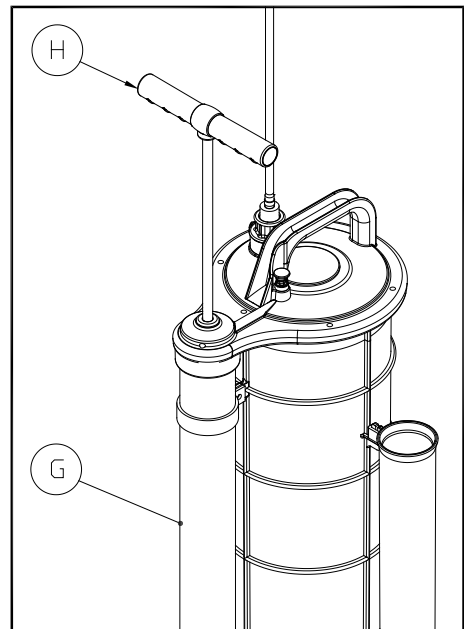
3. Insert the Extracting Tube ( L ) into the dipstick hole until it reaches the bottom of the oil pan.

Connect the Main Suction Tube ( K ) into the Fluid Inlet Coupler ( J ) with the Main Suction Tube Adapter.

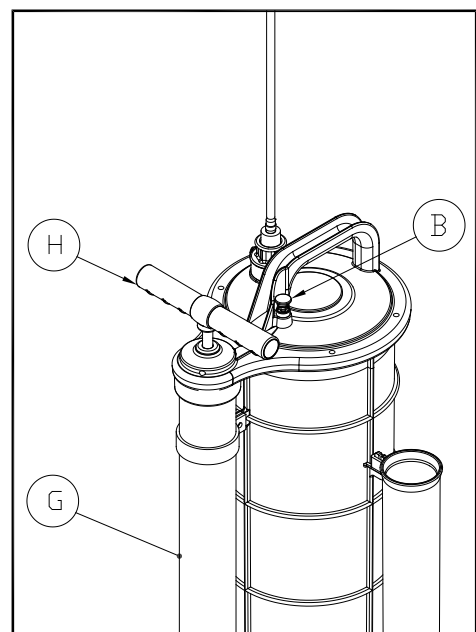
The Main Suction Tube ( K ) will connect to the Extracting Tube ( L ) with the Extracting Tube Adapter.



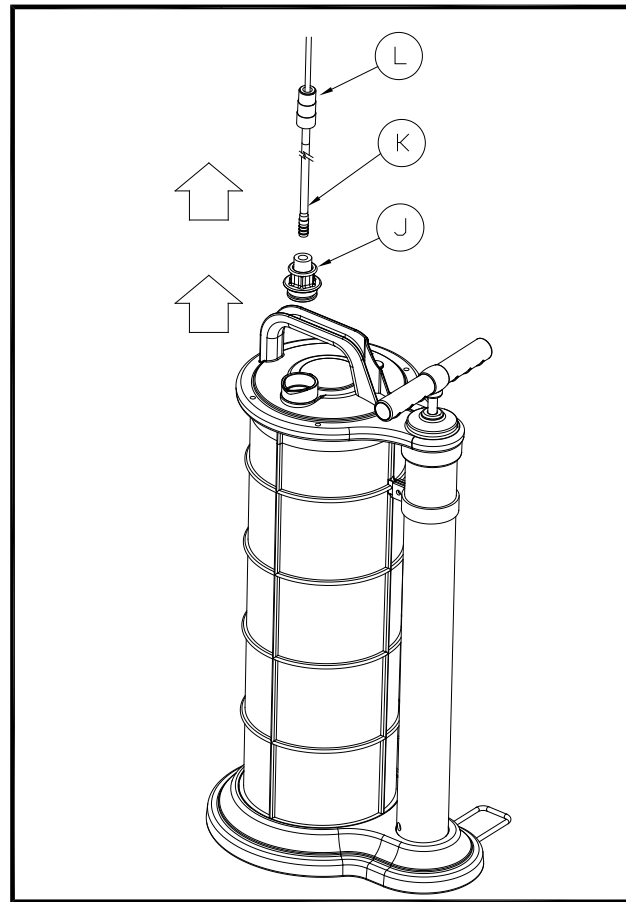
4. Lift the Handle ( H ) of the Hand Pump ( G ) to the top position and press it to the bottom position repeatedly.  
The Extractor Unit will start operation.



5. When the fluid inside the extractor tank reaches "Full" position, the Extractor Unit will shut off automatically, the Handle ( H ) of the Hand Pump ( G ) will lock. Push the Release Button ( B ) on the side of the Cover Housing ( A ), and then press the Handle ( H ) of the Hand Pump ( G ) to the bottom position to release Hand Pump from locked position.

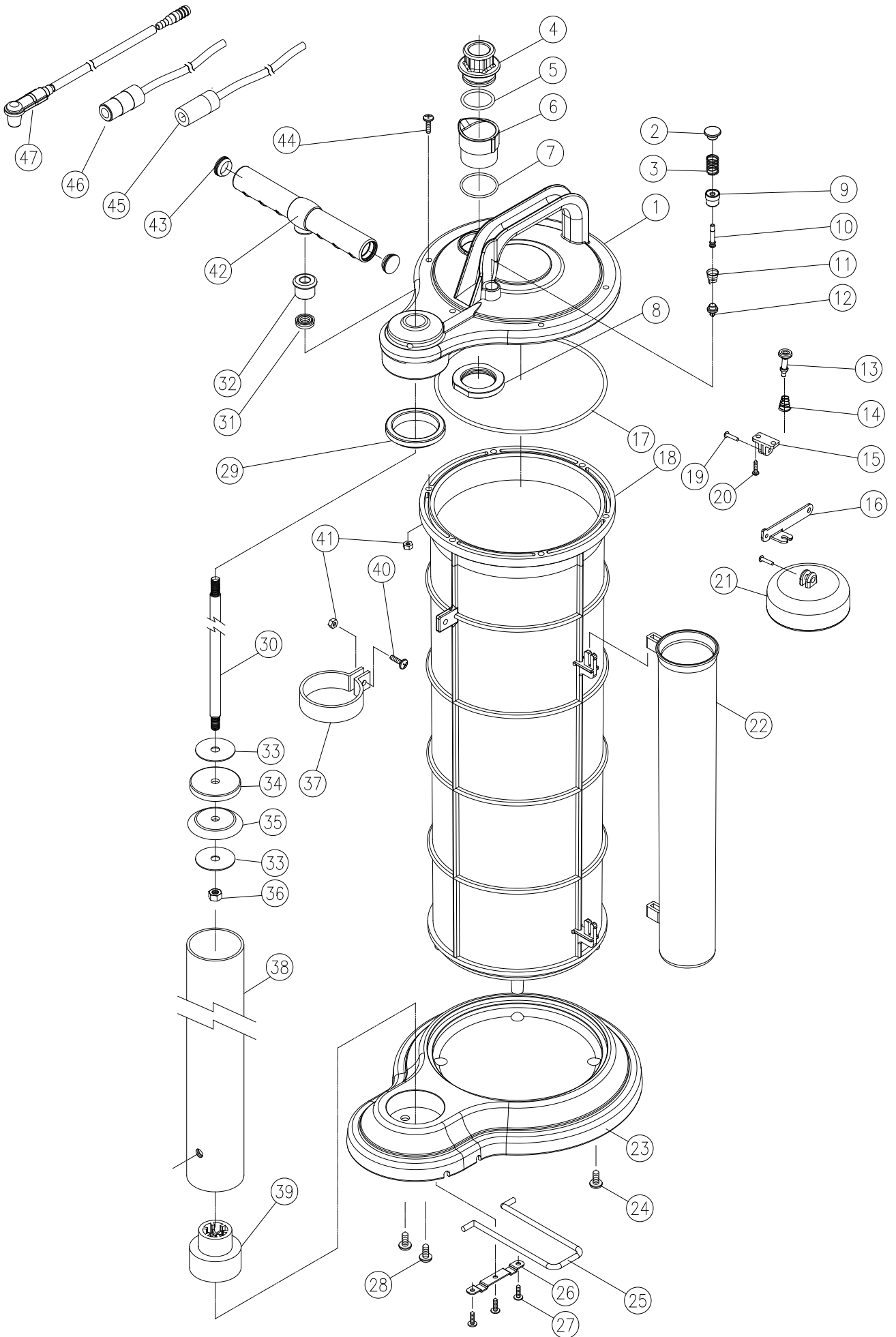


6. Disconnect the Main Suction Tube ( K ) and the Extracting Tube ( L ) remove them from the dipstick hole. Open the Fluid Inlets Coupler ( J ) and dispose of the oil or fluid in accordance with the laws and guidelines in your state.



Trouble shooting:

No.	Trouble Cause	Trouble shooting
1	When the Extractor Unit is working, but it can't suck the fluid any more	Check that the extraction tube has been inserted completely and firmly or has slipped out? Inspect that the fluid has been completely emptied or not? Check the fluid inside the extractor tank level – if "Full", empty tank.





## PART LIST

Index	Part No.	Description	Unit	Index	Part NO.	Description	Unit
1	PX90M-01	Cover Housing	1	26	PX90-12	Fixed Strip	1
2	PX90-49	Release Button	1	27	PX90-35	Screw $\varnothing 4 \times 10 \text{mm}$	3
3	PX90-49-1	Spring	1	28	PX90-36	Screw M8x16mm	2
4	PX90-06	Fluid Inlet Coupler	1	29	PX90M-29	Ring Seal	1
5	PX90-14	O Ring $25.2 \times \varnothing 2.7 \text{mm}$	1	30	PX90-18	Shaft	1
6	PX90-05	Fluid Outlet Housing	1	31	PX90-28	Oil Seal	1
7	PX90-32	O Ring $31 \times \varnothing 1.0 \text{mm}$	1	32	PX90-27	Holder	1
8	PX90-09	Lock Nut	1	33	PX90-47	Flat Washer	2
9	PX90-49-6	Locking Bushing	1	34	PX90-46	Piston Spacer	1
10	PX90-49-3	Shaft	1	35	PX90-45	Piston	1
11	PX90-49-5	Spring	1	36	PX90-44	Hex Nut M8	1
12	PX90-51	Check Valve	1	37	PX90-19	Holder	1
13	PX90M-13	Safety Cup	1	38	PX90M-17	Alum. Tube	1
14	PX90-49-5	Spring	1	39	PX90M-23	Alum. Tube Base	1
15	PX90M-15	Bracket Base	1	40	PX90-38	Screw M5x16mm	1
16	PX90M-16	Arm	1	41	PX90-39	Nut M5	7
17	PX90-13	O Ring $154.3 \times \varnothing 3.5 \text{mm}$	1	42	PX90-16	Handle	1
18	PX90-02	Reservoir Tank	1	43	PX90-20	Cap	2
19	PX55-19	Pin	2	44	PX90-43	Screw M5x20MM	6
20	PX55-25	Screw $\varnothing 3.8 \times 10 \text{mm}$	2	45	PX90-30	Main Suction Tube W/Adapter	1
21	PX55-20	Float	1	46	PX90-31	Extracting Tube W/Adapter	1
22	PX90-04	Tube Storage Unit	1	47	PX90-68	Connector	2
23	PX90-03	Base	1	48	PX90-29	Brake Tube W/Rubber Fitting	1
24	PX90-34	Screw $\varnothing 6 \times 15 \text{mm}$	4				
25	PX90-11	Footboard	1				

The type's specifications may be changed without notice