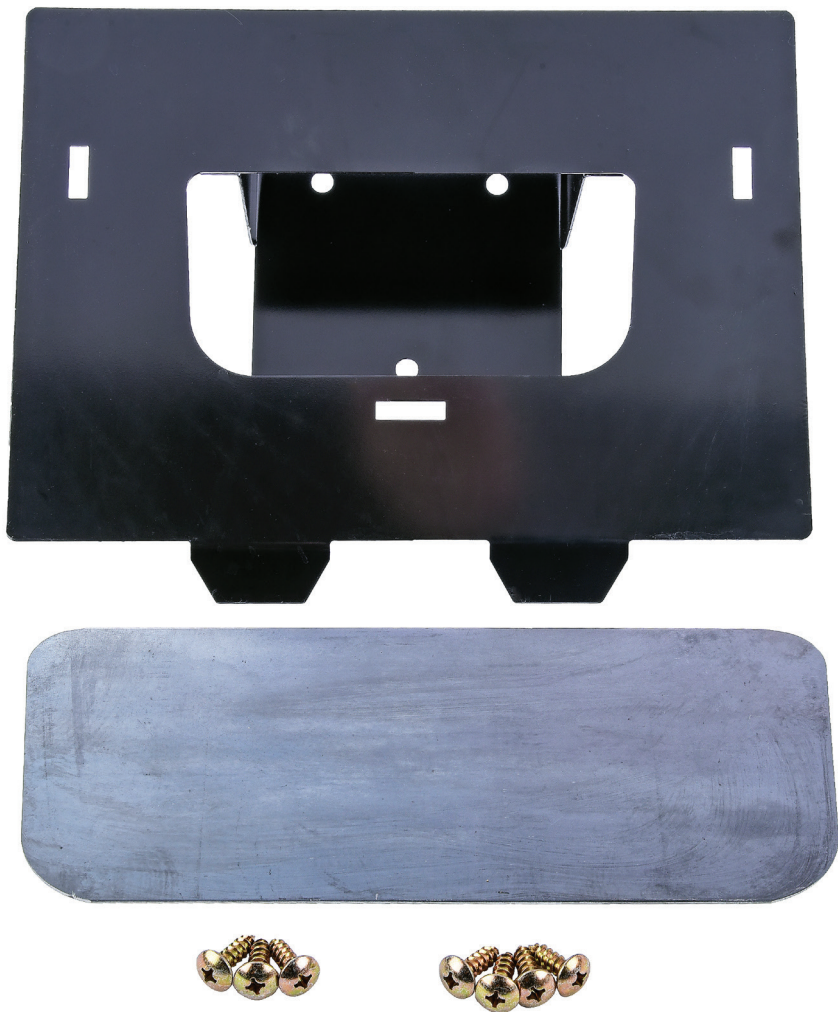


User Manual for 78837

Tailgate Handle Relocation Kit

2007-2013 GM Trucks



Warning

Installation of this tailgate handle relocation kit requires the use of metalworking, including cutting, welding and painting.

Please read the following step-by-step instructions prior to installation. If you're not confident in your ability to install this kit, please consult a professional.

This kit cannot be returned once it has been modified.

.....

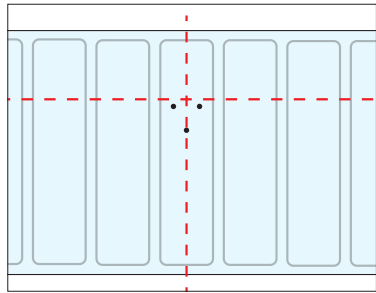
Instructions



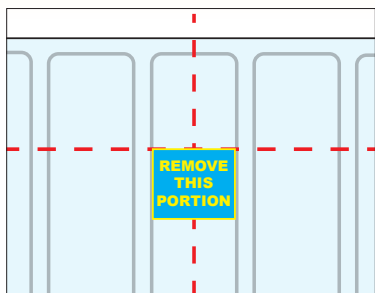
1. Open the tailgate and remove the (3) bolts from back that hold handle in place.



2. Carefully remove the handle from its original position making sure to un-clip the attached rods.



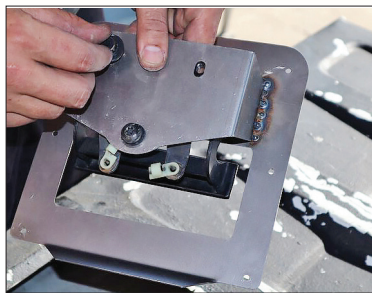
3. Use a tape measure to locate left-to-right center of the back of tailgate and mark a line. Then measure the distance from top of tailgate to current handle location. Mark that distance on inside of tailgate.
4. Place the relocator bracket on your center line. Mark the mounting holes on back of tailgate, but don't drill yet.



5. Using a straight edge, mark a square $\frac{1}{4}$ in. inside of the mounting hole marks. This is the area to be cut out.



6. Cut the square out of your tailgate using an angle grinder, or plasma cutter. Be careful to avoid damaging the outer skin of the tailgate.
7. Remove linkage rods from inside of tailgate, and re-install left to right and right to left.



8. Install handle into relocater bracket reusing the truck's original hardware.
9. Place the bracket over the the hole cut into the tailgate. Re-install linkage to handle.



10. Place assembled relocater bracket and handle into the hole, double-check mounting hole marks, then drill and install mounting screws.

Continued onto next page. →

11. With the tailgate handle installed and working, the next step is bodywork.
12. Sand or strip the paint around the old handle mounting hole to bare metal.
13. Test fit the included fill panel, and trim as necessary until you have a flush fit.
14. Slowly tack the fill panel into place alternating sides to prevent warping. Take your time and periodically let the metal cool.



15. Once the fill panel is fully welded in place, use an angle grinder to grind the welds flush. Additional welding may be necessary.

16. Use a skim coat of body filler to finish the metal.
17. Prime and paint to match your existing paintwork.