

Installation Instructions for 81241

Auto Rotisserie

(2,000 lb. Capacity)

Getting Started

Please read the following instructions and warnings carefully before assembly. Failure to do so may result in serious injury, property damage, or death. Before assembly, verify that all components are accounted for and in good condition. If not, contact customer service.

Keep this assembly guide for future reference.

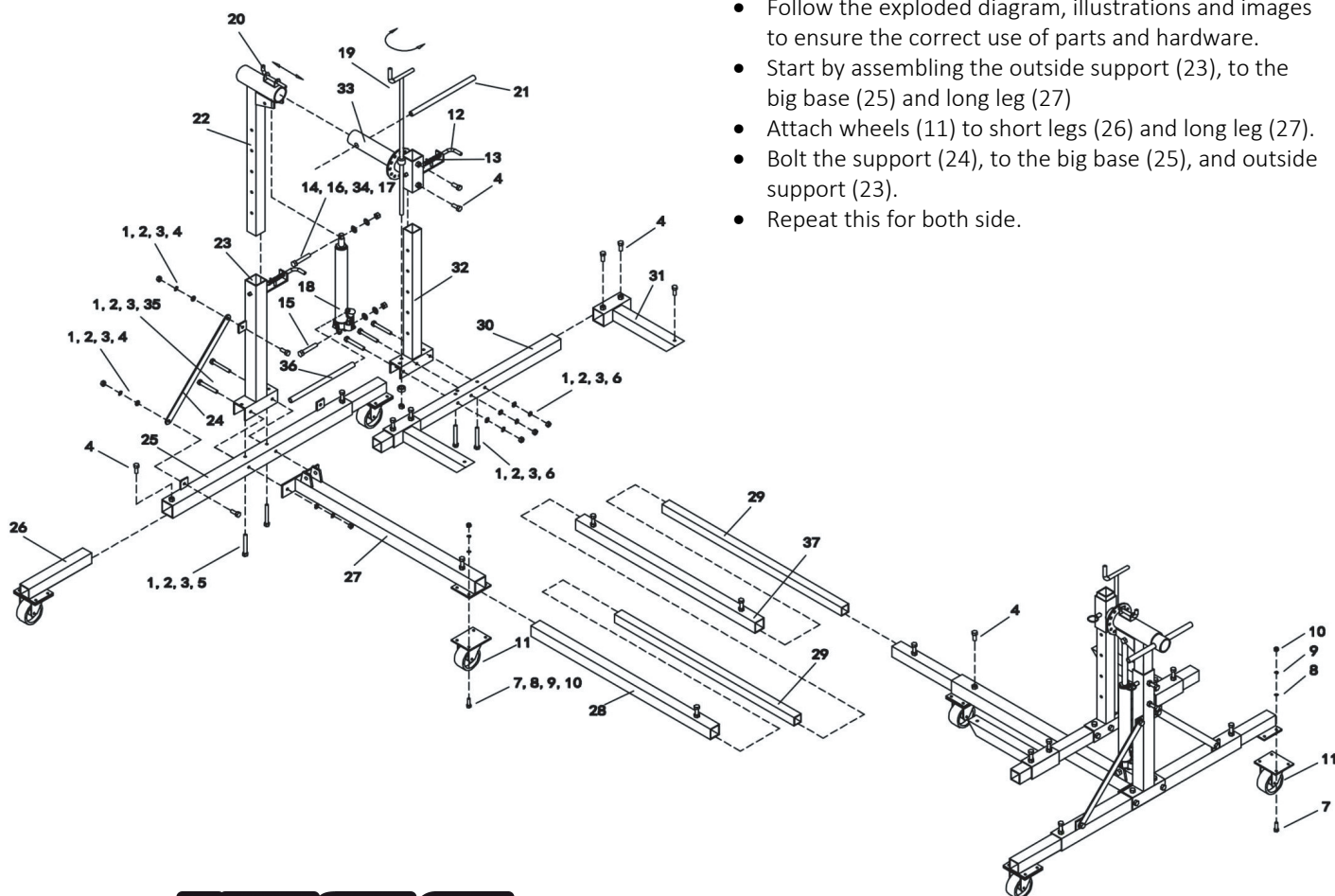
JEGS is not responsible for any damage or injury that may occur due to improper assembly or use. Repairs should only be made using the proper replacement parts.

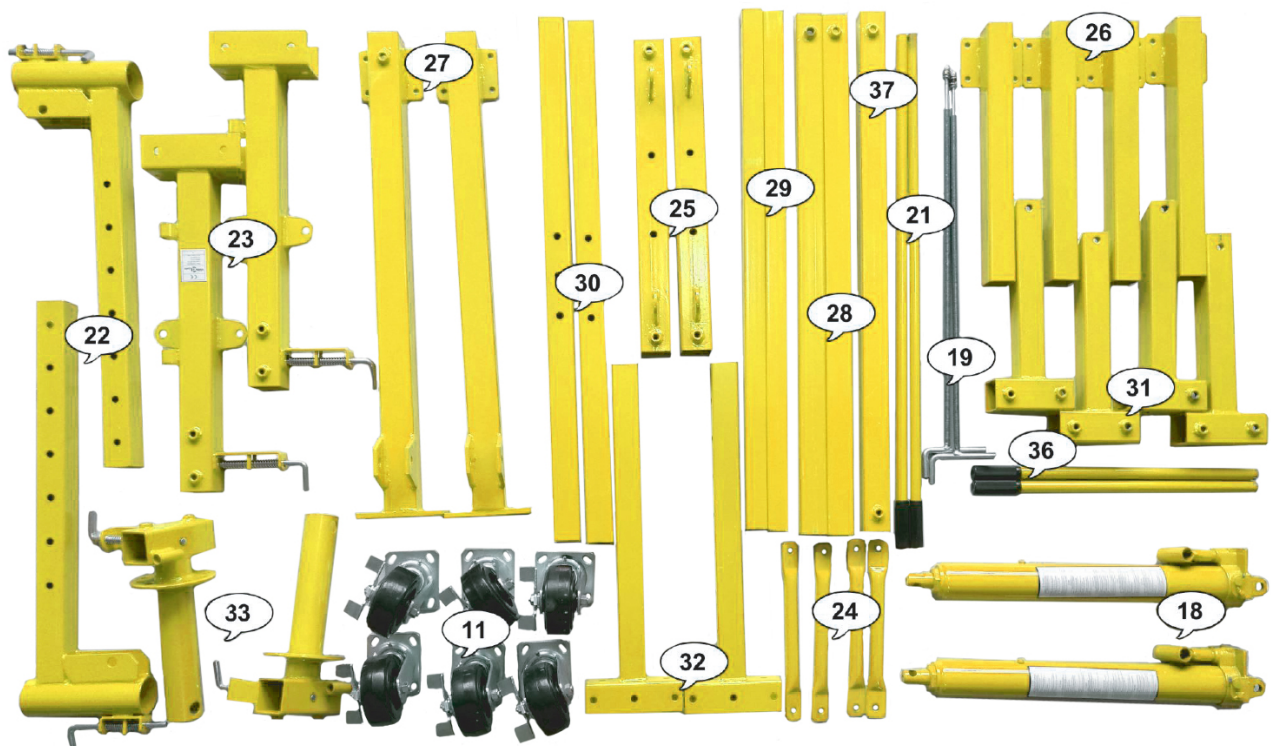
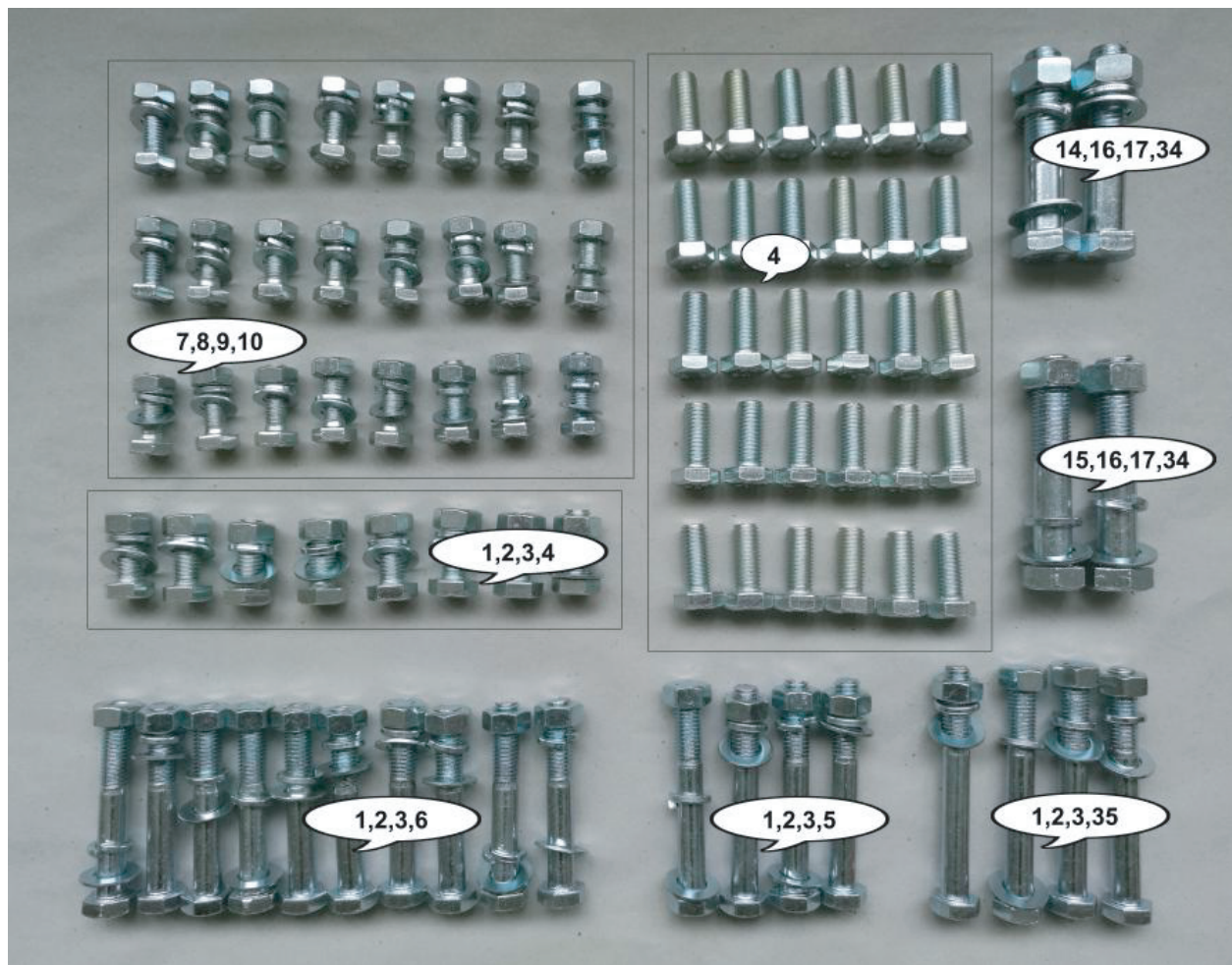
Safety

- This rotisserie is designed for supporting and rotating vehicle bodies with a maximum weight of 2,000 lbs.
- Do not exceed maximum capacity.
- Do not lift complete cars or other objects.
- Wear proper safety gear when using this tool.
- Do not climb on vehicle while it is being suspended.
- Do not use excessive force to raise or rotate vehicle.
- Make sure to properly secure body to rotisserie prior to use.
- Modification to the rotisserie may compromise functionality and safety.

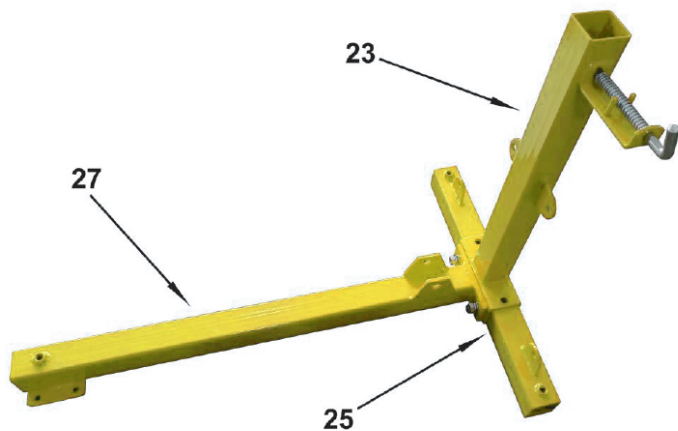
Assembly

- Follow the exploded diagram, illustrations and images to ensure the correct use of parts and hardware.
- Start by assembling the outside support (23), to the big base (25) and long leg (27)
- Attach wheels (11) to short legs (26) and long leg (27).
- Bolt the support (24), to the big base (25), and outside support (23).
- Repeat this for both side.





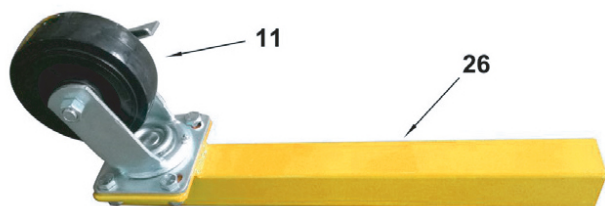
1



2



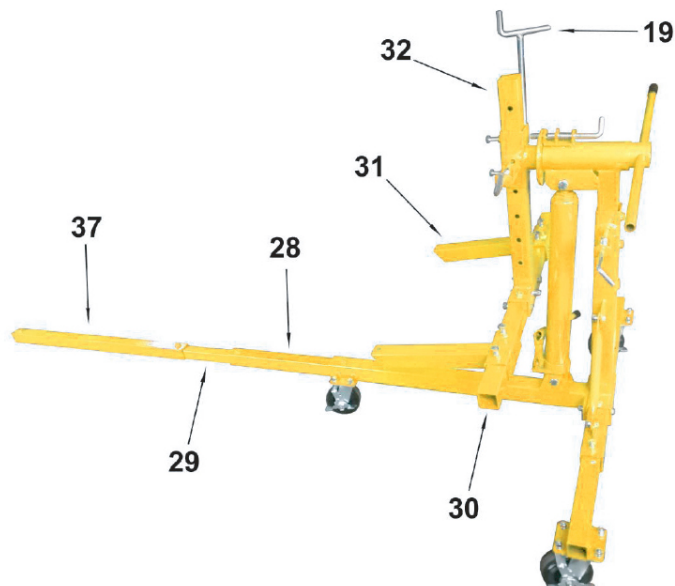
3



4



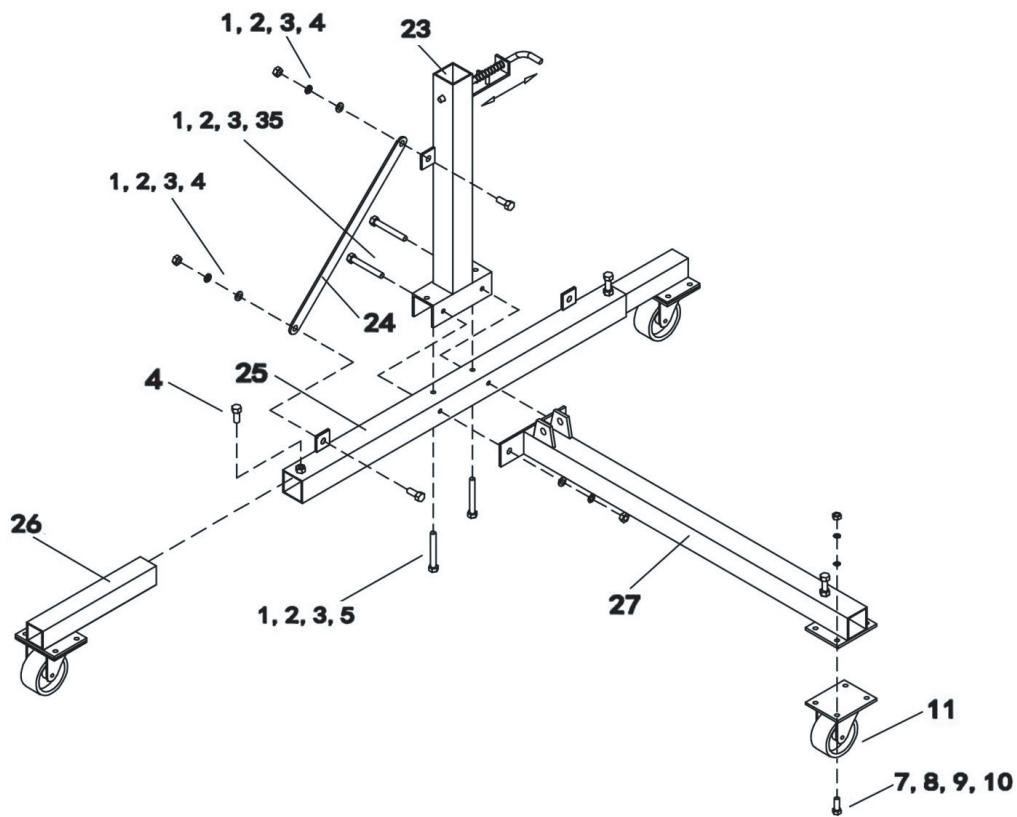
5



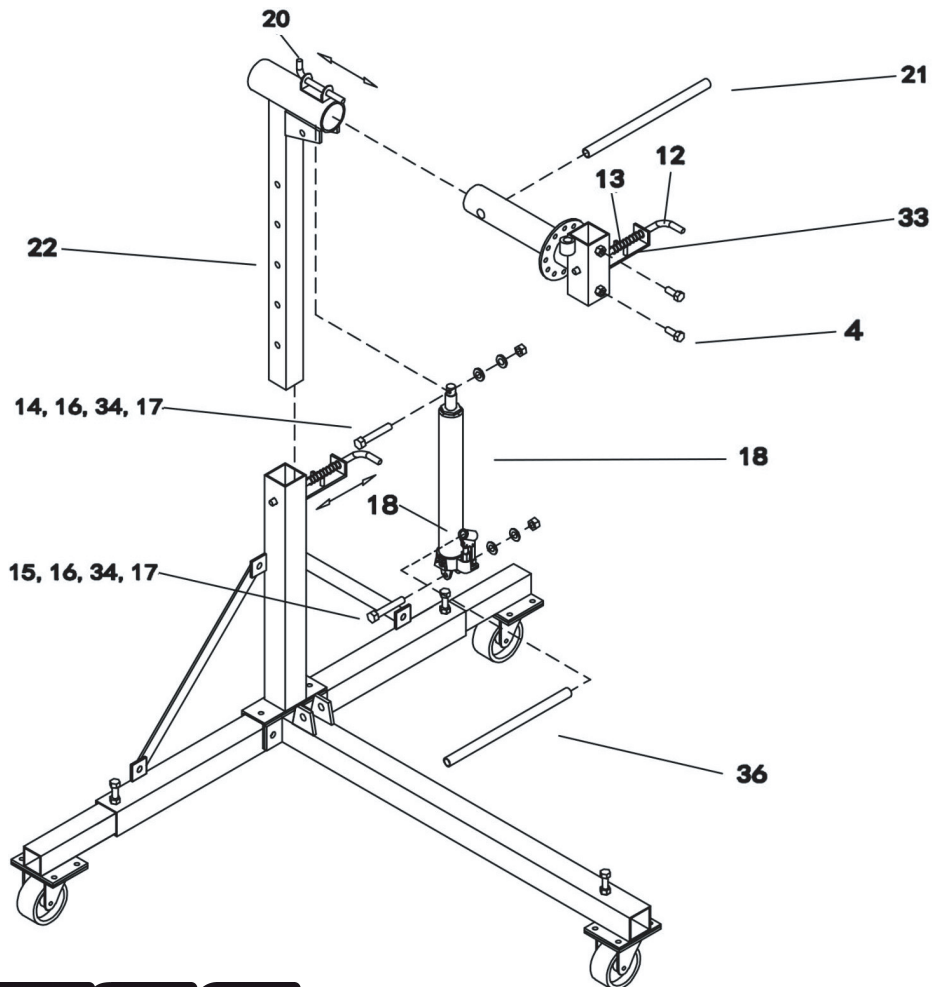
1-800-345-4545 jegs.com

3

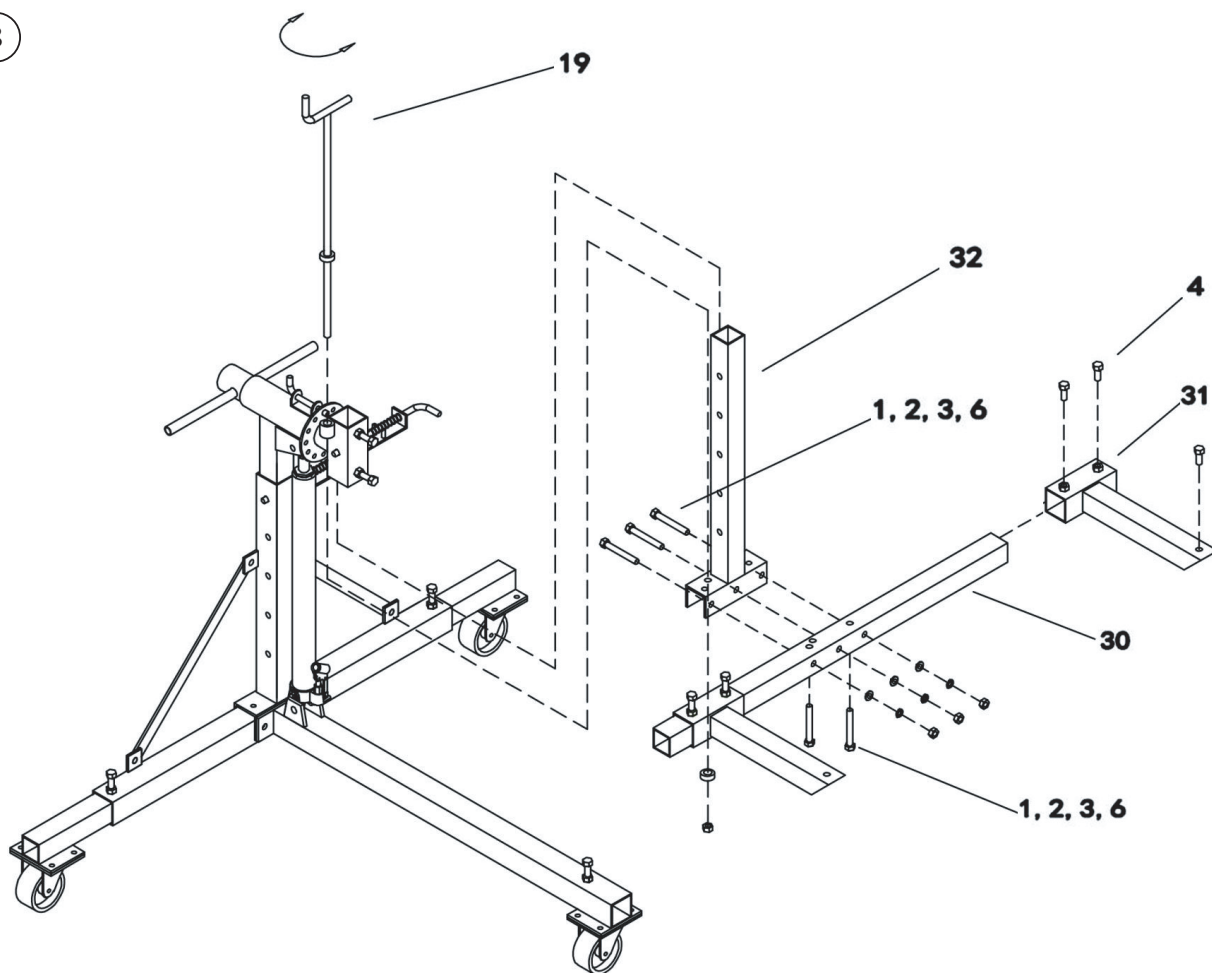
6



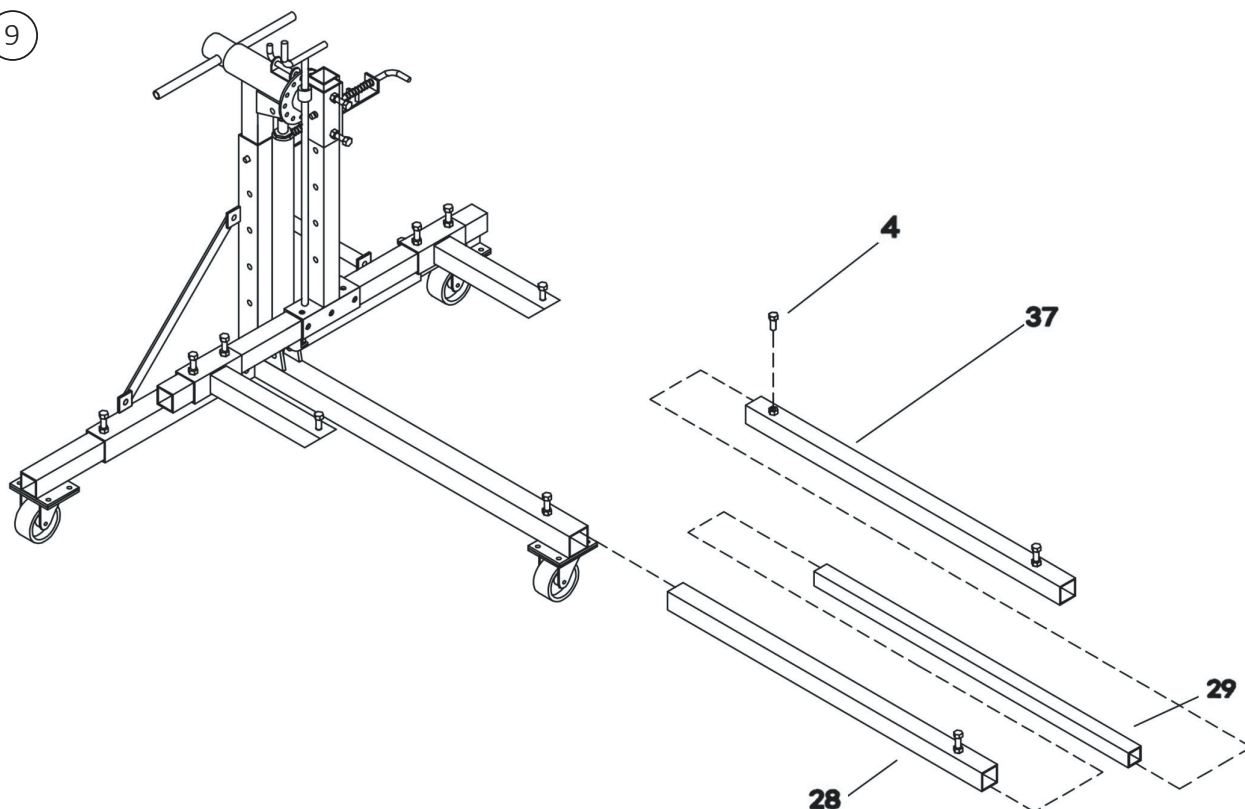
7



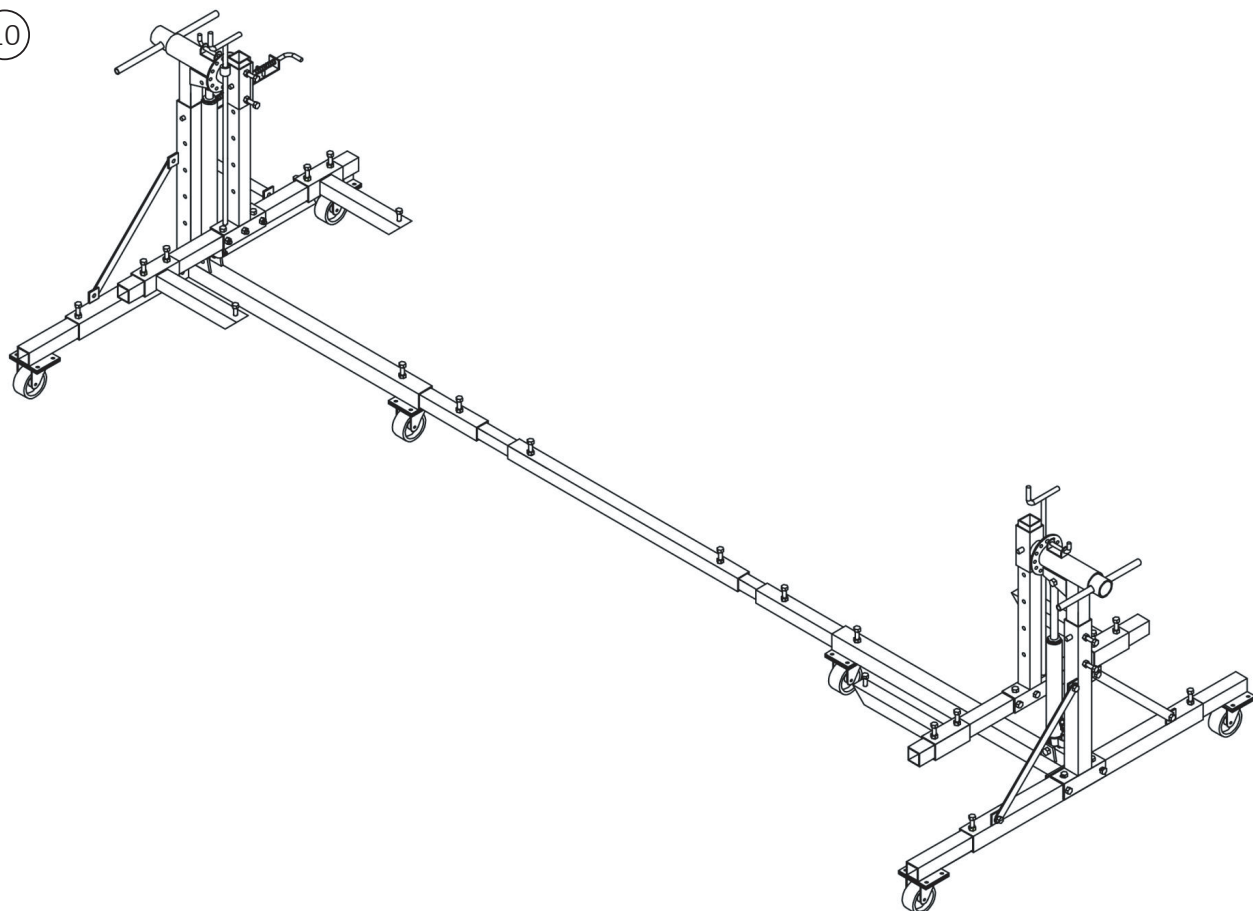
8



9



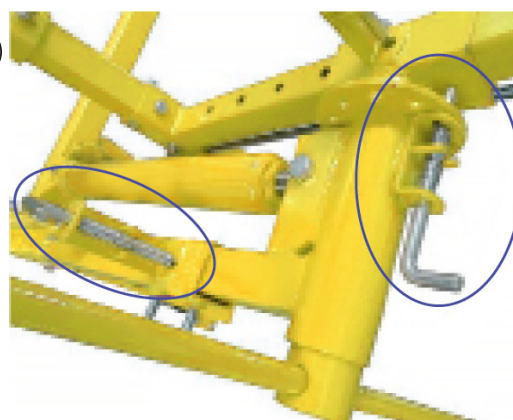
10



11



12



13

