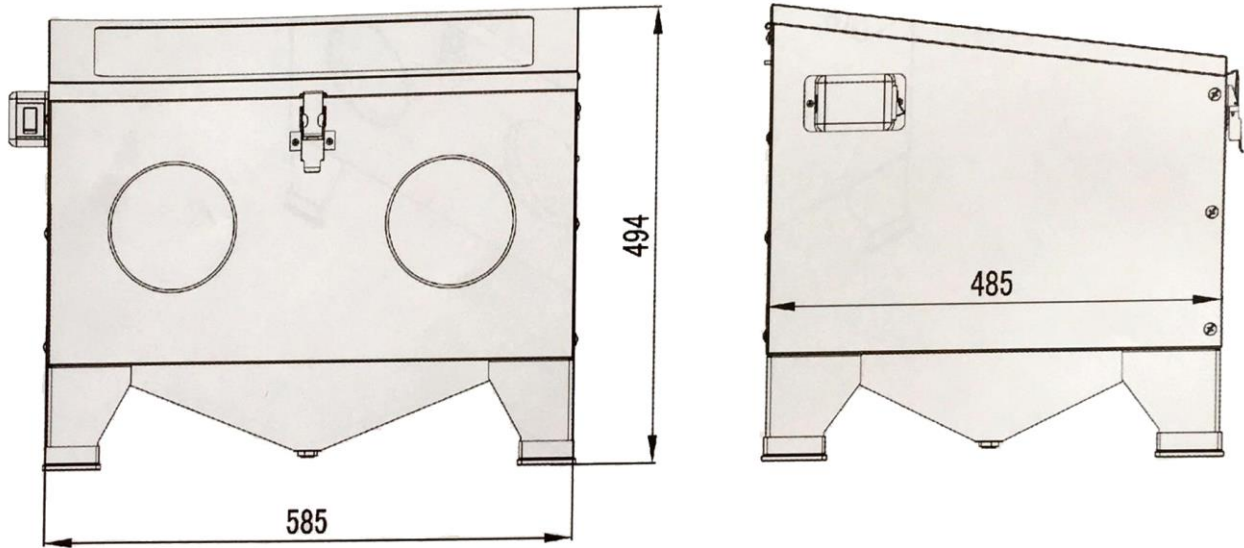


## Installation Instructions for 81502

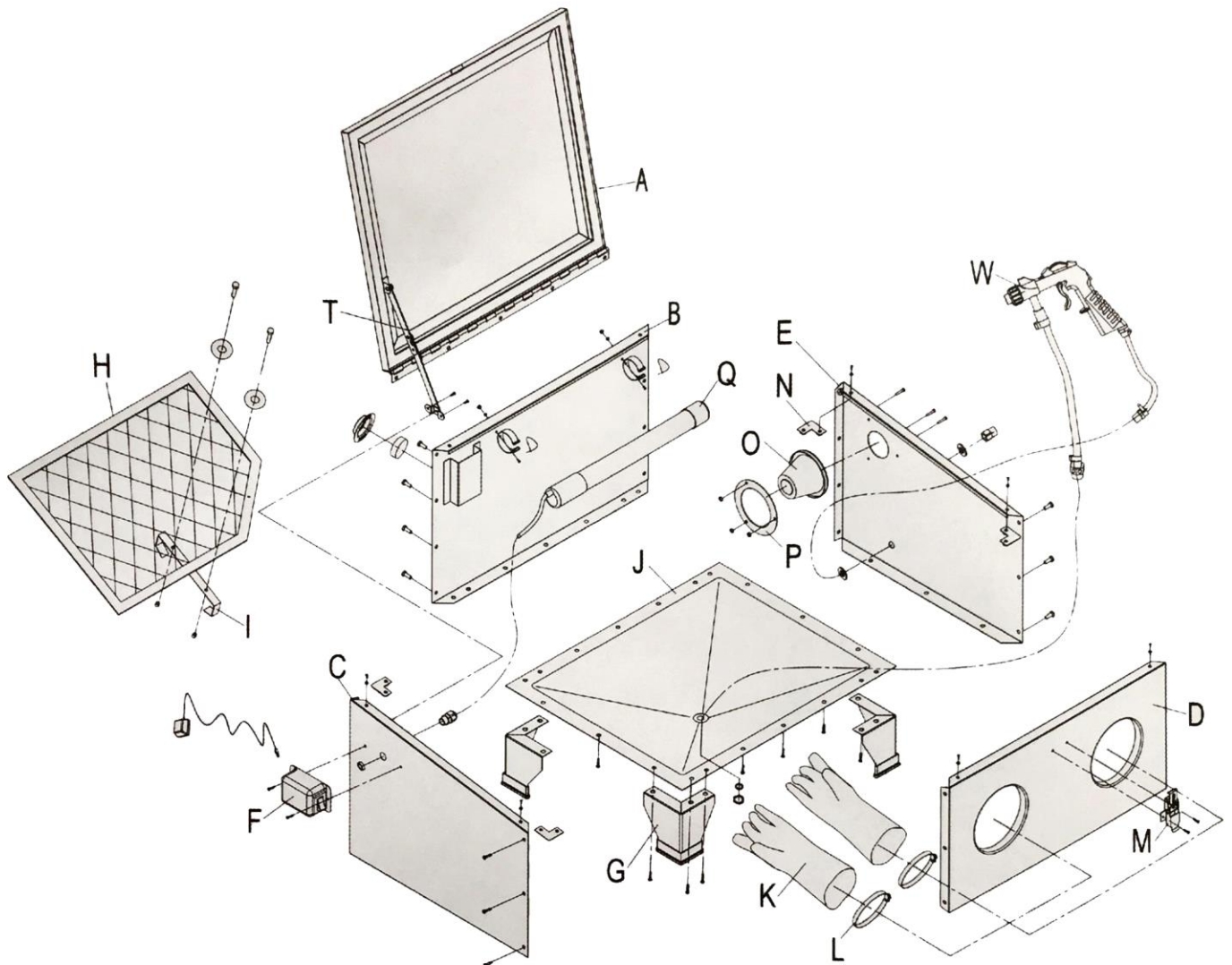
### Bench Top Blast Cabinet

15-25 CFM @ 40-120 PSI



#### Specialties:

- 1.) Durable steel construction and top door
- 2.) Transparent glass viewing window
- 3.) Cleaning the parts rust, stains etc. in the cabinet; the dust fall in the cabinet
- 4.) Overall dimensions: 58.5cm (length) x 48.5cm (width) x 49.4cm (height)
- 5.) Sand capacity in the funnel: 6.5L
- 6.) Working space: 58cm (length) x 48cm (width) x 35cm (height)
- 7.) Air compressor delivery of 15-25CFM @ 40-120PSI
- 8.) Output voltage: 12V; Power:8W
- 9.) Shipping package:63X55X22.5CM



| Part  | Description       | Quantity |
|-------|-------------------|----------|
| A     | Top door assembly | 1        |
| B     | Back plate        | 1        |
| C     | Left plate        | 1        |
| D E F | Front plate       | 1        |
|       | Right plate       | 1        |
|       | Switch box        | 1        |
| G     | Foot              | 2 sets   |
| H     | Work shelf        | 1        |
| I     | Work shelf leg    | 1        |
| J     | Funnel            | 1        |
| K     | Gloves            | 1 sets   |
| L     | Glove clamps      | 2        |
| M     | Latch             | 1        |

| Part | Description      | Quantity |
|------|------------------|----------|
| N    | Connection piece | 4        |
| O    | Filter           | 1        |
| p    | Tableting        | 1        |
| Q    | Lamp             | 1        |
| T    | Support frame    | 1        |
| W    | Gun              | 1        |

**Accessories & Contents**

| <b>Part</b> | <b>Description</b> | <b>Quantity</b> |
|-------------|--------------------|-----------------|
| AA          | M6x12mm SCREW      | 42              |
| BB          | M4x20mm SCREW      | 3               |
| CC          | M4x10mm SCREW      | 15              |
| DD          | M4x6m SCREW        | 2               |
| EE          | M6 Nut             | 35              |
| FF          | M4 Nut             | 10              |
| GG          | 4 Flat Washer      | 20              |
| TT          | 4 Spring Washer    | 2               |
| KK          | 6 Flat Washer      | 2               |
| HH          | Lamp clamps        | 2               |
| II          | Nylon cable tie    | 2               |
| JJ          | Sealing cotton 6   | 1               |
| NN          | Sealing cotton 3   | 4               |
| OO          | Teflon tape        | 1               |
| PP          | Protection Film    | 5               |
| QQ          | AC adaptor         | 1               |
| RR          | Back filter cover  | 1               |
| SS          | Sponge             | 1               |



**1-800-345-4545 [jeps.com](http://jeps.com)**

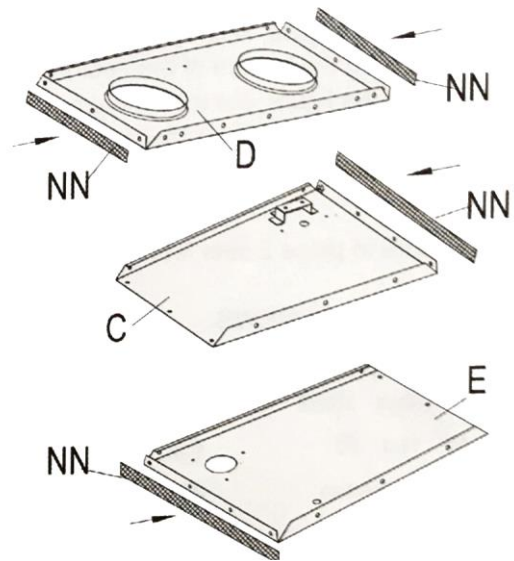
**1. Stick the sealing cotton:**

As show in the figure, stick 3 x 22 sealing cotton (NN) on the outer edge of front plate (D), left plate(C), and right plate (E).

**Noted:** Ensure to stick sealing cotton (NN) 10mm exceed for every edge end.

**HARDWARE USED**

(NN) Sealing Cotton



**2. Assemble the cabinet:**

As show in the figure, install the back plate(B), front plate (D), left plate(C) and right plate(E) using M6\*12 screw (AA) nut (EE).

Operation method:

Seal all corners with exceeded sealing cotton.

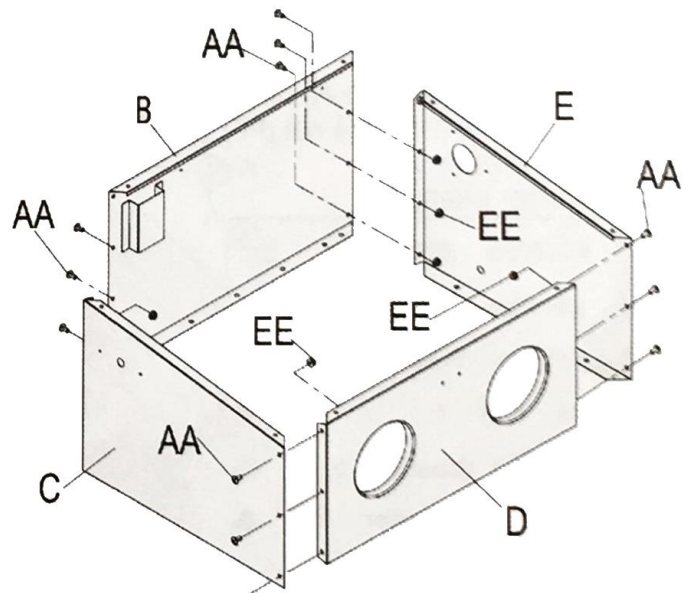
**Noted:** Firstly only install the three M6\*12 screw (AA) in the bottom of the back plate (B).

DO NOT COMPLETELY TIGHTEN

**HARDWARE USED**

(AA) M6 x 12mm Screw 12

(EE) M6 Nut 12



**3. Assemble connection piece (N):**

As show in the figure, install the four connection piece (N) on the inside corners of the cabinet respectively using M4\*10 screw (CC), 4 flat washer (GG).

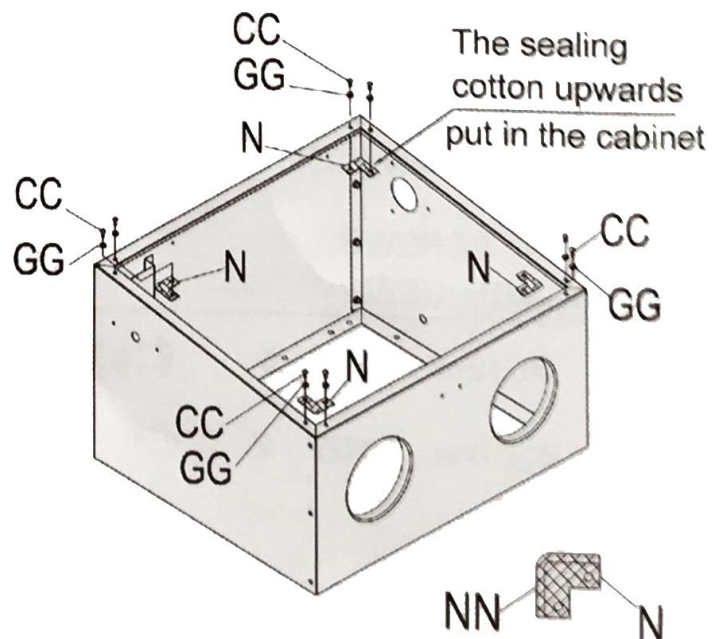
Ensure all cabinet corners connect well.

TIGHTEN SCREWS

**HARDWARE USED**

(CC) M4 x 10mm SCREW 8

(GG) 4 Flat Washer 8



4. Assemble funnel (J) and foot (G):

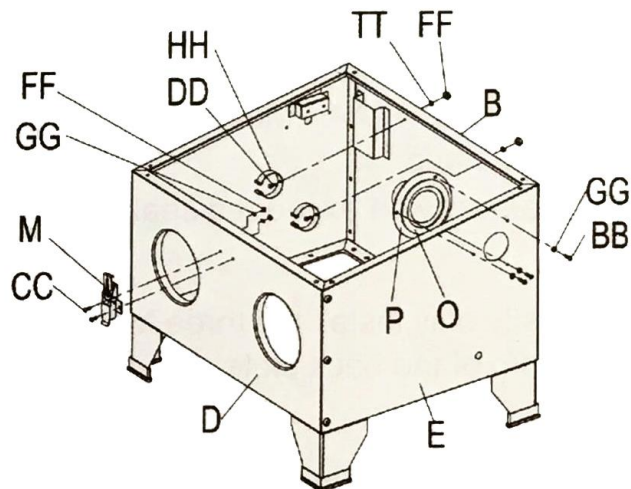
- 1.) As show in the figure, stick the 3 x 22 sealing cotton (NN) on the bottom of the cabinet.
- 2.) As show in the figure, put the funnel on the cabinet, then put the four feet (G) on the funnel, using M6\*12 screw (AA), M6 nut (EE) to install them.

**Noted:** Ensure to place 2 sets feet (G) in right position.

TIGHTEN ALL SCREWS

**HARDWARE USED**

- (AA) M6 x 12mm Screw 20  
(EE) M6 Nut 20  
(NN) Sealing Cotton



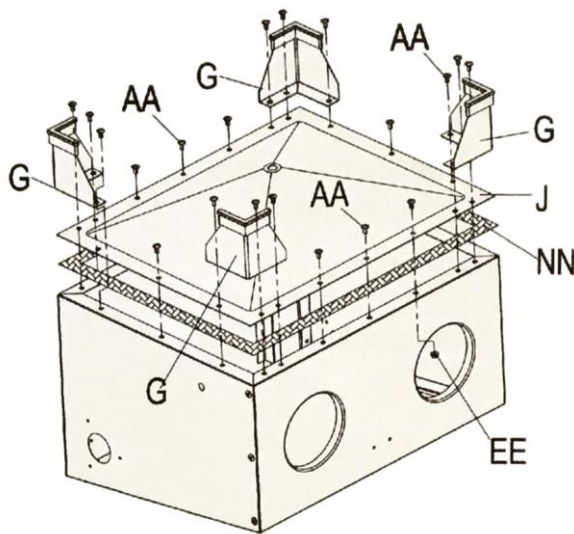
5. Assemble filter (O), latch (M), and lamp clamps (HH):

- 1.) As show in the figure, install the tabletting (P) and filter (O) on the right plate (E) using M4\*20 screw (BB), M4 nut (FF), 4 flat washer (GG).
- 2.) Install the latch (M) on the front plate (D) using M4\*10 screw nut (FF), 4 flat washer (GG).
- 3.) Install the lamp clamps (HH) on the back plate (B) using M4\*6 screw (DD), M4 nut (FF), 4 spring washer (TT).

TIGHTEN SCREWS

**HARDWARE USED**

- (BB) M4 x 20mm Screw 3  
(CC) M4 x 10mm Screw 2  
(DD) M4 x 6mm Screw 2  
(FF) M4 Nut 7  
(GG) 4 Flat Washer 5  
(TT) 4 Spring Washer 2  
(HH) Lamp Clamps (HH) 2



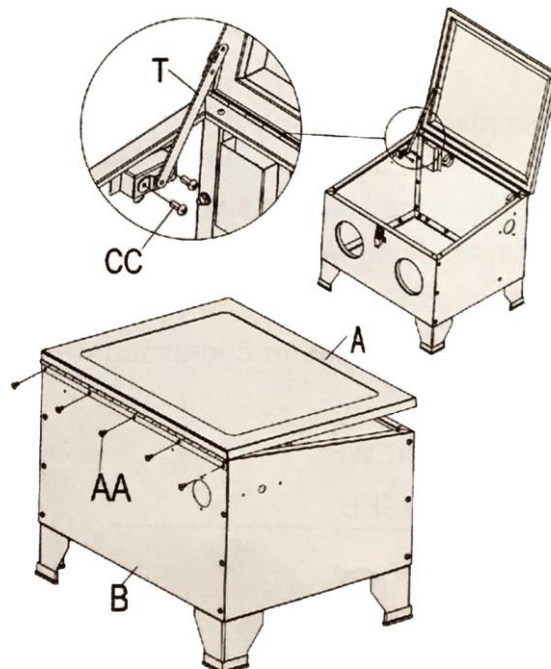
6. Assemble top door assembly (A):

- 1.) As show in the figure, install the top door assembly (A) using M6\*12 screw (AA) on the back plate (B), then tighten screws.
- 2.) Install the support frame (T) on the left plate (C) using M4\*10 screw (CC).

TIGHTEN SCREWS

**HARDWARE USED**

- (AA) M6 x 12mm Screw 5  
(CC) M4 x 10mm Screw 2



7. Assemble gloves (K), lamp (Q), switch box (F):

1.) As shown in the figure, install the gloves (K) on the front door using gloves clamps (L).

2.) Install the sponge (SS) and back filter cover (RR) on back plate (B).

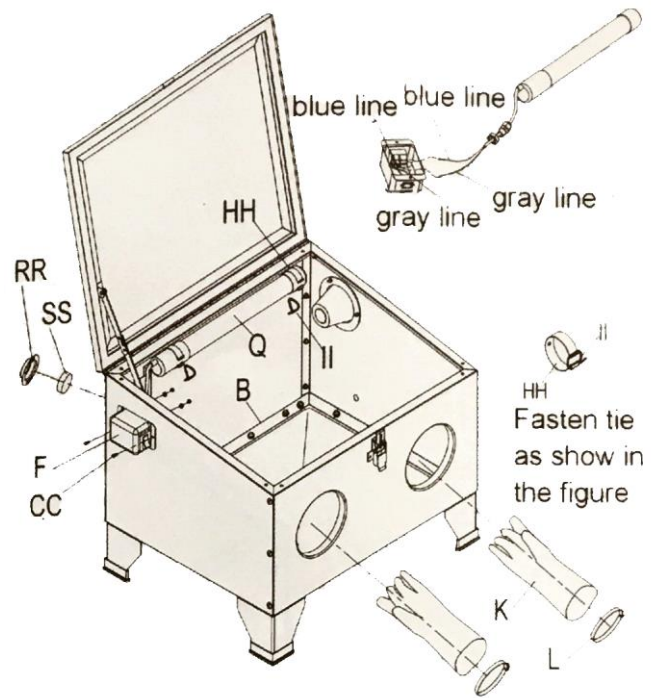
3.) Put the lamp (Q) into the lamp clamps (HH), then fasten tie (II) as show in the figure.

4.) **First:** Pull the lamp wire out form the hole of the left plate (C), then tighten the screw connection cable;  
**Second:** connect the lamp wire to the switch box accordingly, please note the wire color (blue wire to blue wire; grey wire to grey wire), the same color wire in the same side of the switch.

**Noted:** Ensure the wire tightly connected.

5.) Using M4\*10 screw (CC), M4 nut (FF), 4 flat washer (GG) to fix the switch box (F) on left plate (C).

**Noted:** the position of the switch is toward the operator.



#### TIGHTEN SCREWS

#### HARDWARE USED

(CC) M4 x 10mm Screw 2

(FF) M4 Nut 2

(GG) 4 Flat Washer 2

(II) Nylon cable tie 2

(RR) Back filter cover 1

(SS) Sponge 1

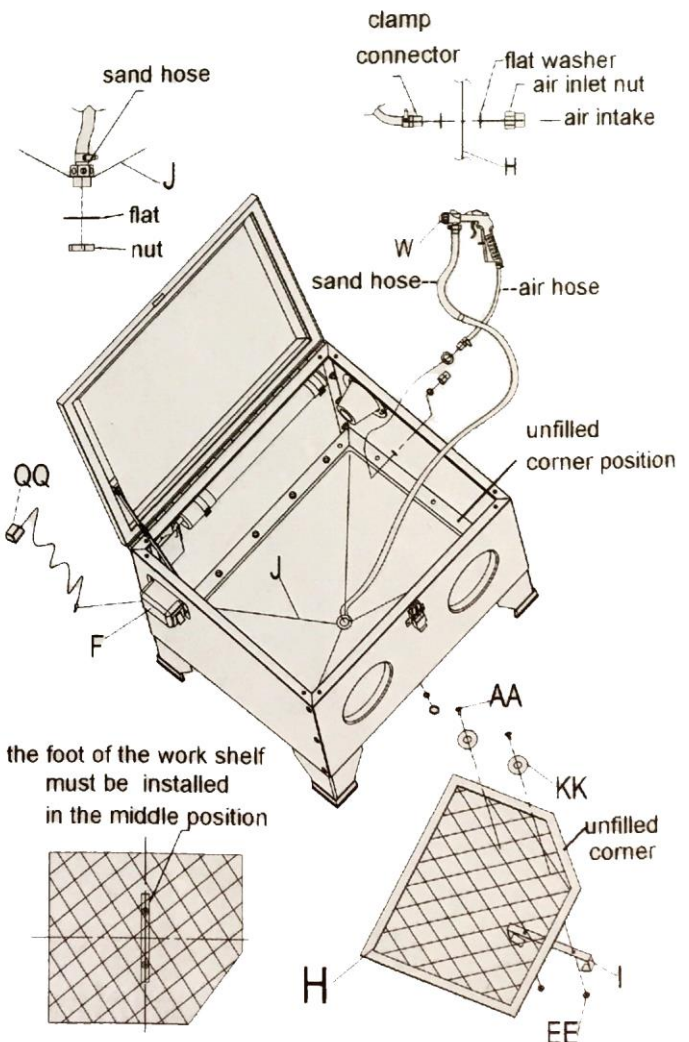
8. Assemble gun (W), adaptor (QQ), shelf (H):

1.) As shown in the figure, fix the sand hose to the funnel (J); connect clamp connector to air inlet nut, using Teflon tape for good sealing.

2.) Connect the adaptor (QQ) to the switch box (F).

3.) Install the work shelf leg (I) on the work shelf (H) using M6\*12 screw (AA), M6 nut flat washer (KK), then put them together into the cabinet.

**Noted:** Make sure the unfilled corner of shelf is in the right position.



#### HARDWARE USED

(AA) M6 x 12mm Screw 2

(EE) M6 Nut 2

(KK) 6 Flat washer 2

(QQ) Adapter 1

9. After the installation, check the correctness of the product assembly; then connect the power supply, air supply, check the electrical part and ensure that the electrical part can work normally; check the sealing performance of this product, at last put the sand into the cabinet and begin to work.



1-800-345-4545 [jegs.com](http://jegs.com)