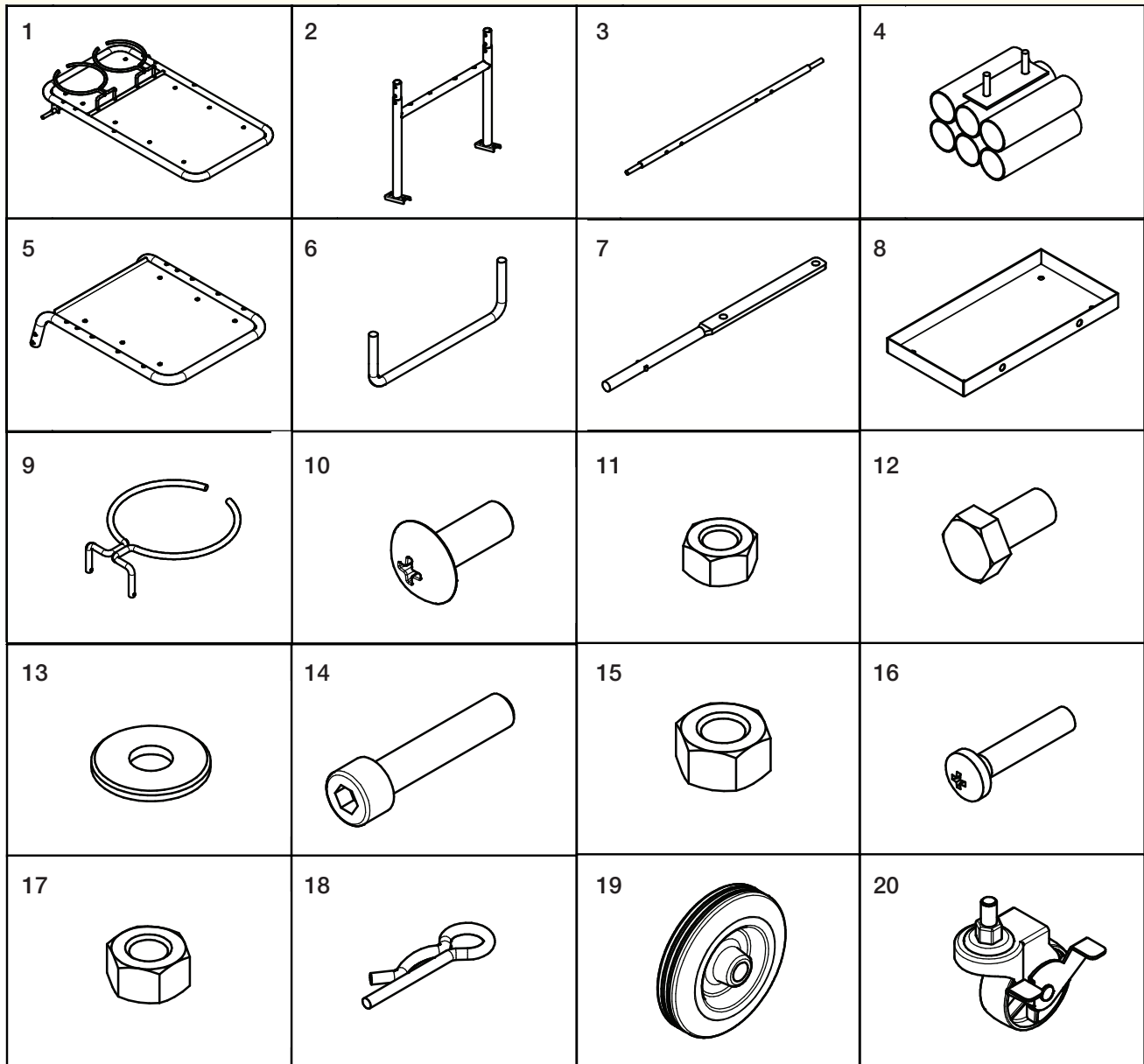


Installation Guide for 81648

Welding Cart [37 in. L x 24.8 in. W x 38.34 in. H]



Parts List



1	(1) Lower Shelf	6	(4) Side Hooks	11	(8) Nuts (M6)	16	(4) Screws (M8x40mm)
2	(1) Upper Shelf Mount (rear)	7	(2) Side Shelf Mounts	12	(2) Bolts (M6x12mm)	17	(4) Nuts (M8)
3	(2) Upper Shelf Mount (sides)	8	(2) Side Shelves	13	(2) Washers (Flat M6)	18	(4) Cotter Pins
4	(2) Tig Rod Holders	9	(2) Tank Holders	14	(4) Bolts (M10x50mm)	19	(2) Wheels
5	(1) Upper Shelf	10	(4) Screws (M6x12mm)	15	(14) Nuts (M10)	20	(2) Casters (360°)

Installation

1. ASSEMBLE TOOL STORAGE TRAYS & ROD HOLDER

• *Trays*

- Arrange trays with flanges facing upward, place against the flat faces of the uprights and align the mounting holes.
- Attach trays at the rear of each storage tray upright, insert M6x12 screws & attach with M6 nuts. The threads should protrude outward from the trays.

• *TIG Rod Holder*

- Rod holders are attached to the upper shelf side mount. Slide holder threads through mount and secure with M6 nuts.

2. ATTACH WHEELS TO BASE

• *Front casters*

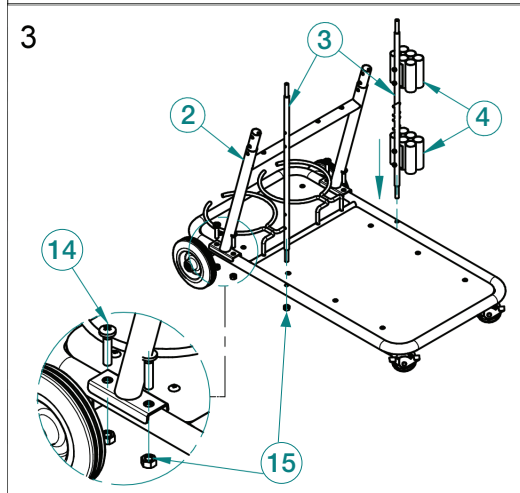
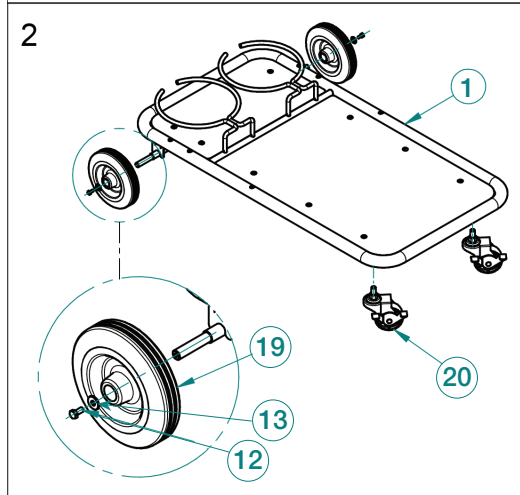
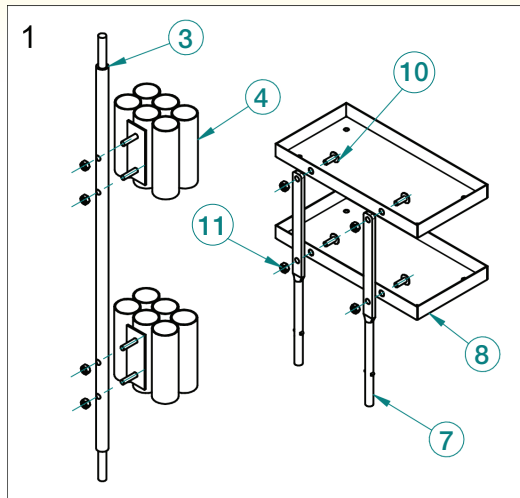
- Screw threaded caster top into captive nuts located on the bottom of the lower shelf.

• *Rear wheels*

- Place Wheels onto axle.
- Secure with M6x12mm bolts and M6 flat washers.

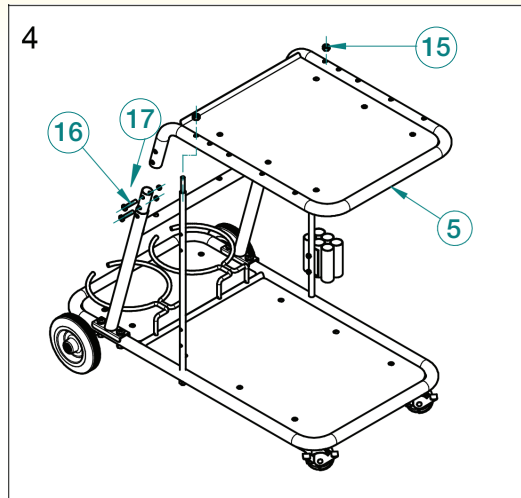
3. ATTACH UPPER SHELF SUPPORTS

- Attach rear upper shelf mount in front of the rear wheels using M10x50mm bolts with M10 nuts.
- Slide upper shelf side mounts into holes on bottom shelf and secure threads with M10 nuts.



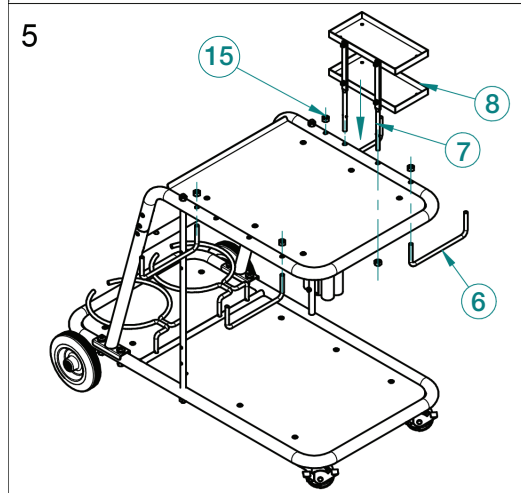
4. ATTACH UPPER SHELF

- Slide upper shelf tubing on rear shelf mount, at the same time let the side mounts slide into location.
- Secure rear mount with M8x40 bolts and M8 nuts.
- Side mounts are held in place with M10 nuts.



5. ATTACH TOOL STORAGE TRAYS & SIDE HOOKS

- **Storage Tray**
 - Slide the tool storage tray assembly into the framework of the upper shelf.
 - Use M10 nuts to secure.
- **Side Hooks**
 - Slide side hooks into place from underneath the upper shelf framework.
 - Secure with M10 nuts.



6. ATTACH UPPER SHIELDING TANK HOLDERS

- Slide tank holders into rear upper shelf mount cross-bar with locating pins facing downward.
- Secure with cotter pins.

