

# ***Installation Guide for 90250***

## **9 in. LED Headlight Kit**

*2018-Up Jeep Wrangler JL & Gladiator JT*



**1-800-345-4545 [jegs.com](http://jegs.com)**

## Parts Breakdown



- 1. (2) LED halo headlamps
- 2. (2) Headlight anti-flicker harnesses
- 3. (1) Halo harness

- 4. (1) Add-A-Circuit wiring [Ignition-on DRL]
- 5. (1) Fuse
- 6. (1) Allen wrench [For headlight alignment]



## Installation Steps

1. Disassembly (Figure 1)
  - Remove front grille.
  - Remove the existing halogen headlights
    - They are held in place by (3) 10mm bolts, per side.
  - Carefully remove the headlights and disconnect them from the harness.
2. Wiring Headlights (Figure 2)
  - Attach the supplied anti-flicker harnesses.
  - Connect the H13 male plug end to the vehicle harness and H4 female plug end to the headlight assemblies.
3. Wiring Daytime Running Lights (Figure 3)
  - Connect Halo harness to the headlight plugs. Ground black wire to body.
  - (Red) Power wire connection.
    - Option 1) Use add-a-circuit wiring and connect Halo's directly to fuse panel, see Figure 3.
    - Option 2) Wire to a dash mounted switch with a constant power source. This allows you to run the halos with the car turned off.
4. Install LED headlights (Figure 4)
  - Place the headlights into the buckets.
  - Secure with the (3) bolts, per side, that were previously removed.
  - Use a 10mm socket to tighten the bolts.
5. Alignment (Figure 5)
  - Having secured the lights in their housings it's time to align the beam with the supplied wrench.
  - At the rear of the bulb there is an alignment screw, covered with a plastic cap. This allen screw will adjust the direction of the beam up or down.
  - See headlight alignment instructions on the following page.
6. Final Assembly
  - Reinstall your grille to complete the installation of this LED headlight kit.



Figure 1



Figure 2

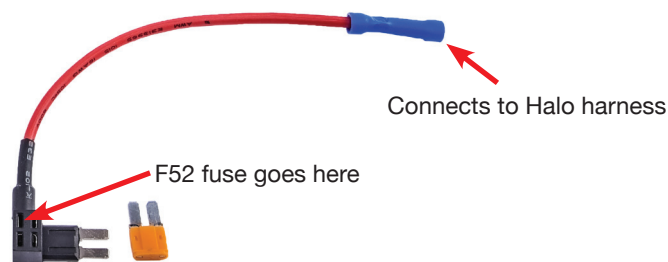


Figure 3 Plugs into the #F52 fuse location (cigarette lighter)

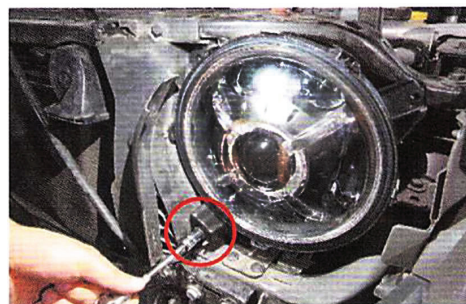


Figure 4

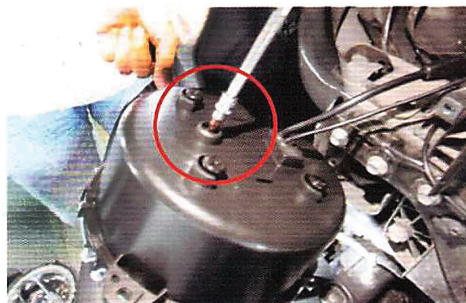


Figure 5

## Alignment Instructions

1. Establish ride height
  - Check tire inflation
  - Fill fuel tank
  - Remove cargo
2. Position car
  - Park car, on level ground, with the nose of the car 5 feet or less from a vertical wall.
  - For best visibility, work in a dark area
3. Establish Baseline
  - With headlights on, low beam, mark the horizontal and vertical beams on the wall with tape (+shape). Do this for both lights.
  - Check marks to see if beams are even. If not, set both sides to lower mark.
  - The horizontal lines shouldn't be any higher than 3 1/2 ft. from the ground.
4. Alignment
  - Increase distance from wall to 25 ft.
  - Work with each light separately. Cover other light to make adjustments easier.
  - Use the supplied allen wrench to adjust beam up or down.
  - For correct alignment the most intense part of the headlight beam should be centered or just below the horizontal tape line. The beam should also be just outside of the vertical line.
5. Testing
  - Drive your car and then double check the alignment and adjust if necessary.



**1-800-345-4545 [jegs.com](http://jegs.com)**