



Owner's Manual

1967 Corvette



WARNING

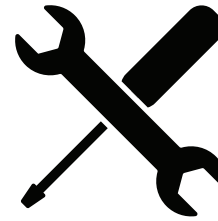


Please read and understand this manual before installing your EPAS kit.

The installation of this system should be done by a professional mechanic or a very knowledgeable amateur. You will be cutting and splicing your steering column, therefore EPAS Performance will not be held responsible for any malpractice. Caution should be taken when installing the electric motor: no impacts, shocks or hammering should be done to the unit. For aesthetic reason, you may choose to paint the assembly either in black or the color of your steering column to conserve the original look.

For a complete understanding, we strongly suggest to read this owner's manual prior to any installation. **Should you have any questions or concerns feel free to contact us at (941) 893-5427 or visit our website for installation videos.**

EPAS Performance wishes you thousands of enjoyable miles with your new Electric Power Steering!



Required tools:

- Drill
- Right angle grinder, with cutting disc
- Goggles
- Measuring tape
- Steering wheel removing tool
- You will also need hand tools to remove the steering column

Disconnect battery.

Take note of the steering shaft depth (This will be used during reassembly) then remove steering wheel and column.

Remove the steering shaft from the column.

On the column tube, make a cut at 13" from the steering wheel side, measuring down. **(Image A)**

On the steering shaft, make a cut at 14" measuring from the steering wheel splines downwards. **(Image B)**

Modifications to the mounting bracket will need to be made in order for the electric motor to fit. The area marked in white denotes the section that needs to be removed. **(Image C)**

Image A

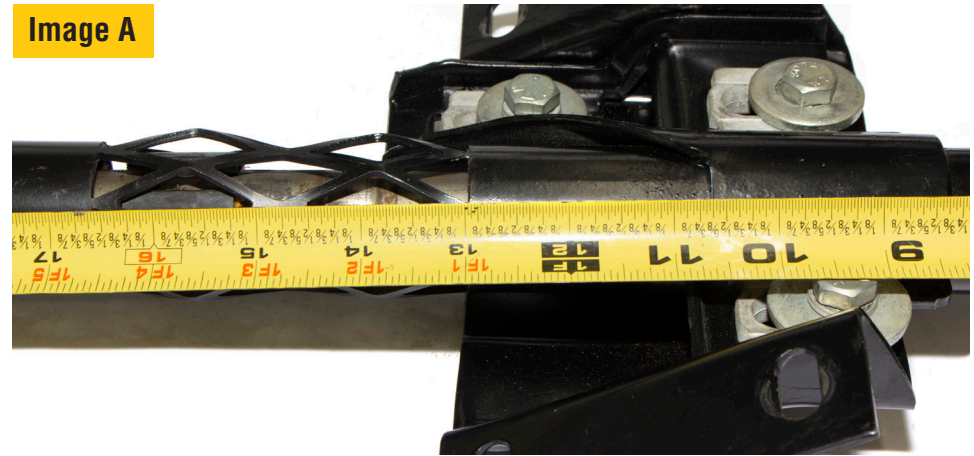


Image B



Image C

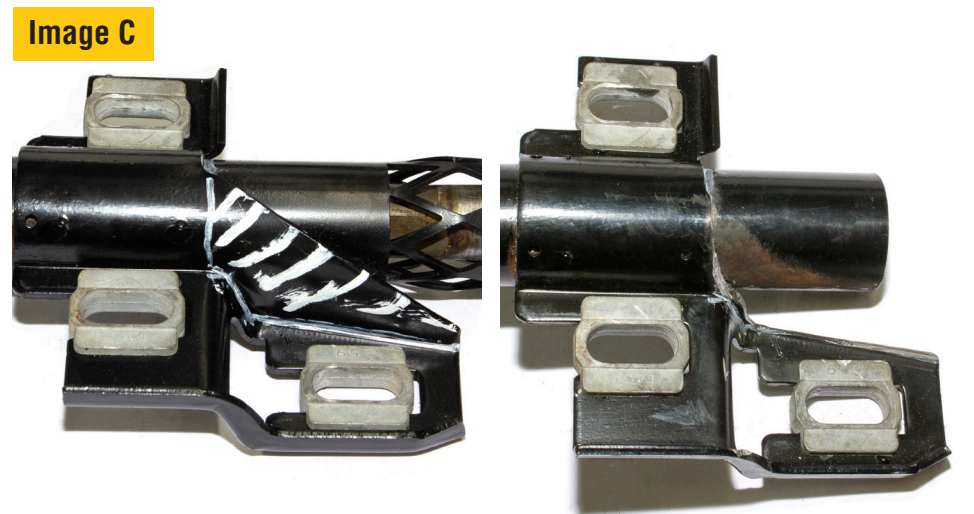
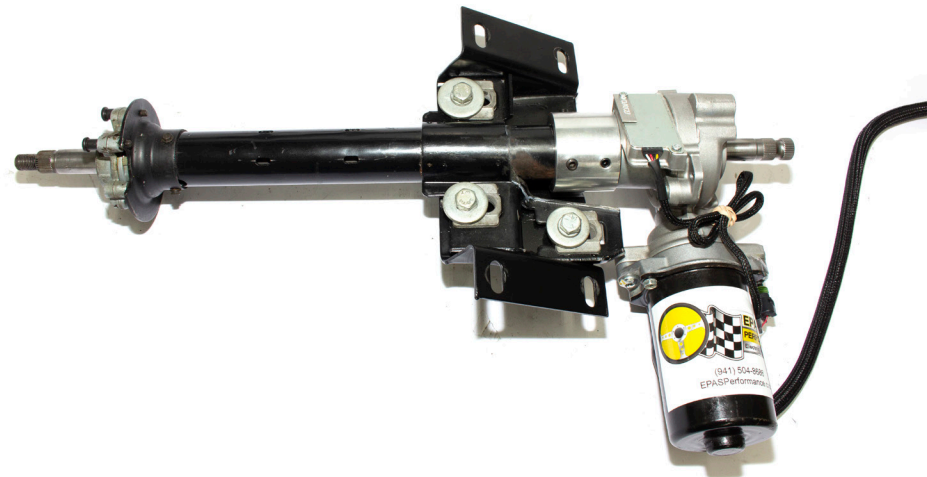


Image D



Install the steering shaft into the electric motor - Tighten set screws. Slide the column over the steering shaft, returning it to its original positioning (using the measurements taken before removal) Be sure to reinstall the c-clip.

Place the aluminum coupler on the cut end of the column tube, attach the EPAS motor. Only tighten set screws enough to hold to tube and motor on to allow for clocking in your vehicle. **(Image D)**

Install the firewall bearing and plates. Leave the bolts loose to allow the bearing to float between the two plates.

Run the shaft with the $\frac{3}{4}$ " DD coupler welded to it through the firewall bearing and plate, into the 1" DD shaft. Leaving just the welded spliced coupler inside the firewall.

Install the steering box ujoint to the 1" DD shaft. Push or pull to achieve required length to install the ujoint onto the steering box. **(Image E)**

Install the EPAS motor with column, be sure to place above the parking brake rod. Align the motor on to the splined welded coupler on the $\frac{3}{4}$ " DD shaft that is through the firewall. Insure you are properly seated into the coupler as if improper installation will cause binding.

Clock the motor to about 3:00 or until it is free of obstructions. **Tighten all set screws.**

Install the dash plate with the column clamp bolts

Tighten firewall plate and it's bearing once all parts are aligned.

Reinstall the steering wheel and the dash panels.

Image E



Install the pre-wired control module on the firewall just next to the fuse block (or elsewhere), hook up the power wire for the motor (blue connector) and the connector for the torque sensor (Delco weathepack). Then hook up the small red wire to a hot in run and the #10 red wire directly to your battery or a direct power source. You can use a 60A fuse if desired. **(Image G)**
Install potentiometer in an accessible location. **(Image F)**

Reconnect the battery.

Turn on the potentiometer and a small “click” will emit.
You are now ready to enjoy power steering and drive with ease!



TERMS AND CONDITIONS

LIABILITY LIMITATION AND RELEASE

We are pleased you have chosen to purchase one of our automotive specialty equipment items. Our products are carefully designed to combine performance, durability and safety, and to work in concert with the vehicle's original equipment. As they are specialty products, however, and as both performance and safety are paramount concerns, we urge our customers to consider having the products professionally installed.

We caution the purchaser that the enhancement provided by the specialty equipment item may change the handling characteristics of the vehicle. We urge the purchaser to carefully familiarize him/herself with the vehicle's performance characteristics with the new equipment. This should be done in a safe environment and in a safe manner.

We have no control over the quality or correctness of equipment installations performed by others, nor can we control the uses (in manner or environment) products are subjected to. Accordingly, liability on the part of EPAS Performance LLC is limited to the terms of its Express Limited Warranty.

A decision by the purchaser to retain and install the item purchased will be deemed acceptance of the specific terms of this Liability Limitation and Release.

The purchaser expressly releases and waives any claim against us for any consequential damages or injury that may arise from the use, or any malfunction, of its product. This Liability Limitation and Release binds the original purchaser, all successors in interest, and all persons to whom the product may subsequently be transferred; and the purchaser agrees to make this limitation known to all such persons. This Liability Limitation and Release is part of the consideration for the sale of the product.

This Liability Limitation and Release is governed by the laws of the State of Florida, United States of America. Any dispute regarding its terms or application is subject to arbitration in the State of Florida at the request of either party to the sale.

WARRANTY

This warranty is limited to the repair or replacement of the defective part only; the warranty specifically excludes labor or consequential damages or injury. The decision as to whether the defective part will be repaired or replaced will rest solely with the manufacturer. The warranty period begins on the date the product is shipped to you.

Full 5-year warranty nontransferable.

This warranty is void if the product is or was improperly installed, abused in any manner. Road or accident damage is not covered.

To make a claim under this warranty, call EPAS Performance to return the defective product, shipping or postage prepaid. Please include a copy of the original purchase invoice and a note describing the circumstances of the failure or malfunction.

This warranty is governed by the laws of the State of Florida, United States of America. Any dispute regarding the coverage of this warranty, its application or terms is subject to arbitration in the State of Florida.

If the purchaser disagrees with any of the terms of this warranty, please return the purchased item within three (3) business days of receipt. A decision by the purchaser to retain and install the item purchased will be deemed acceptance of the specific terms of this warranty.

RETURN POLICY

1. If your shipment arrives in a damaged condition, please notify the carrier immediately.
2. Inspect your order carefully upon receipt. If items are missing, you must contact us within five (5) working days.



EPAS PERFORMANCE
2111 Whitfield Park Ave
Sarasota, FL 34243

1-941-893-5427
1-800-372-7611

www.EPASPerformance.com
Visit our website for installation videos.

