

WARNING

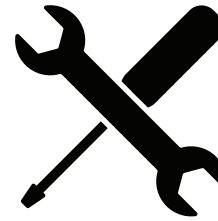


Please read and understand this manual before installing your EPAS kit.

The installation of this system should be done by a professional mechanic or a very knowledgeable amateur. You will be cutting and splicing your steering column, therefore EPAS Performance will not be held responsible for any malpractice. Caution should be taken when installing the electric motor: no impacts, shocks or hammering should be done to the unit. For aesthetic reason, you may choose to paint the assembly either in black or the color of your steering column to conserve the original look.

For a complete understanding, we strongly suggest to read this owner's manual prior to any installation. **Should you have any questions or concerns feel free to contact us at (941) 893-5427 or visit our website for installation videos.**

EPAS Performance wishes you thousands of enjoyable miles with your new Electric Power Steering!



Required tools:

- Drill
- Right angle grinder, with cutting disc
- Goggles
- Measuring tape
- Steering wheel removing tool
- You will also need hand tools to remove the steering column

Disconnect vehicles battery. Remove the column from the vehicle, along with any clamps or accessories all the way to the steering box. Place column on the bench. Remove steering box to bench.

The shaft of the steering box will need a $\frac{3}{4}$ " DD made at 1 $\frac{1}{4}$ " long, from the cut end, upwards. Reinstall the gearbox. **(Image A)**

Disassemble the column. On the column tube, measuring from the bottom lip of the bell housing downwards, make a cut at 11 $\frac{1}{4}$ " (measurement of 1955-1956) (On 1957 the measurement will be 11")

A $\frac{1}{2}$ " hole will need to be drilled on the column, measuring from the cut end upwards at 4 $\frac{5}{8}$ ". **(Image B)**

On the cut end, 3 slices will need to be made at equal placement, 1" up from the cut end. Place clamp loose on the column. The steering shaft, will need to be cut, measuring from the cut end upwards at 4". A $\frac{3}{4}$ " DD will need to be made 1 $\frac{1}{4}$ " long. Reassemble the column. **(Image C)**

Image A



Image B

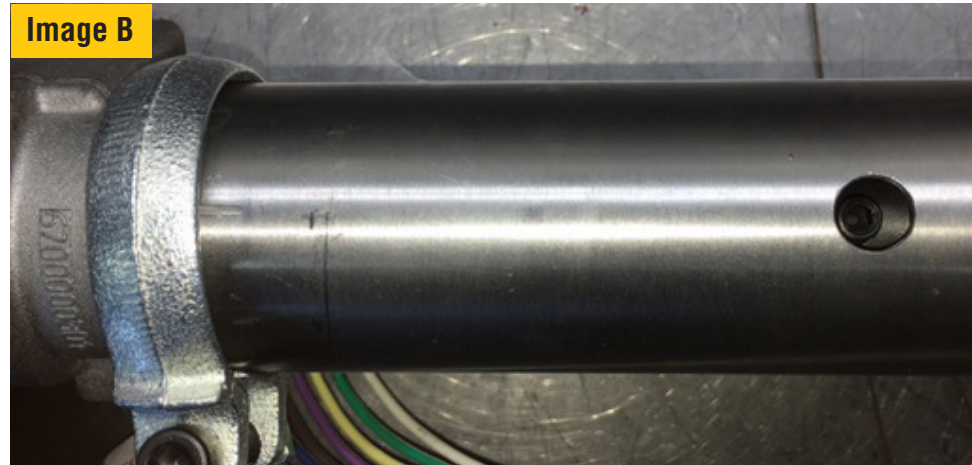
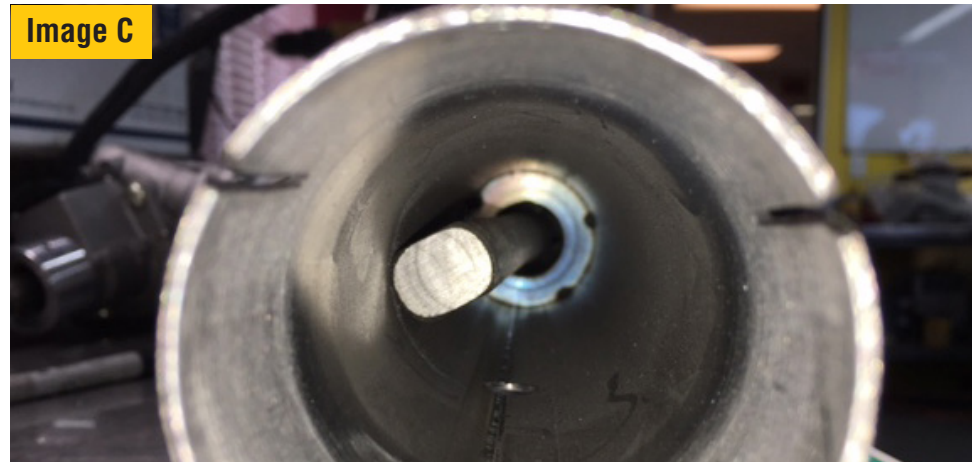


Image C



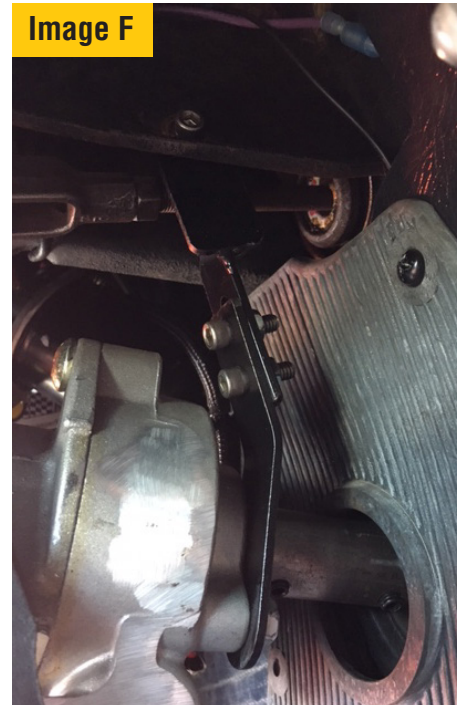
Install the EPAS motor to the end of the column, tightening the set screws for the steering shaft in the coupler of the motor through the hole that was drilled. **(Image D)**

Be sure to place the column tube over the aluminum coupler provided on the motor. Using the clamp provided, over the tube and coupler. **(Image D)**

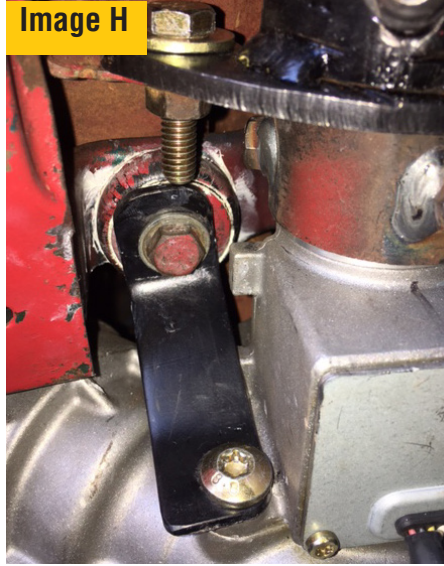
Install the column and motor assembly back into the vehicle. (1955-1956 will use the stock clamp to hold the column) (1957 will use the supplied bracket.) **(Image D)**

Install the firewall plate, leaving the bolts loose for adjustments to the motor. From the inside of the vehicle working outwards towards the engine bay, install the ujoint to the back of the EPAS motor, then using the $\frac{3}{4}$ " DD shaft, feed through the bearing and firewall plate. With the 1" DD shaft, slide into the $\frac{3}{4}$ " DD, and the ujoint going to the steering box. Both $\frac{3}{4}$ " DD shafts should sit inside of each other by about 1". Re adjust if needed. **(Image E)**

1955-1956 Bracket Install- On the splined side of the electric motor, install the bracket as seen in photo below, the top portion of the bracket will need a hole drilled. A $\frac{1}{4}$ " hole in the brake pedal assembly. Install with the provided hardware. **(Image F & G)**

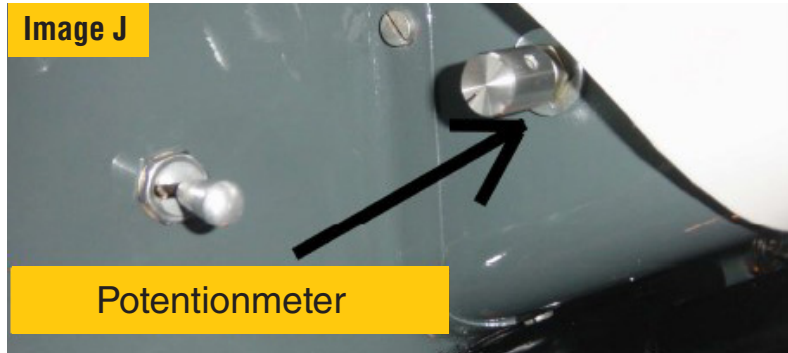


1957 Bracket install- use the 5/16" bolt attached to the EPAS motor as shown below. The top portion of the bracket will use a stock bolt that should line up when motor is clocked. **(Image H & I)**



The potentiometer and control module can be installed in any location that is convince for you. Install the ignition wire, connect to motor to the module, and battery hot wire to the starter solenoid. **(Image J & K)**

Install steering wheel and connect battery.
Turn on the potentiometer and a small "click" will emit.
You are now ready to enjoy power steering and drive with ease!



TERMS AND CONDITIONS

LIABILITY LIMITATION AND RELEASE

We are pleased you have chosen to purchase one of our automotive specialty equipment items. Our products are carefully designed to combine performance, durability and safety, and to work in concert with the vehicle's original equipment. As they are specialty products, however, and as both performance and safety are paramount concerns, we urge our customers to consider having the products professionally installed.

We caution the purchaser that the enhancement provided by the specialty equipment item may change the handling characteristics of the vehicle. We urge the purchaser to carefully familiarize him/herself with the vehicle's performance characteristics with the new equipment. This should be done in a safe environment and in a safe manner.

We have no control over the quality or correctness of equipment installations performed by others, nor can we control the uses (in manner or environment) products are subjected to. Accordingly, liability on the part of EPAS Performance LLC is limited to the terms of its Express Limited Warranty.

A decision by the purchaser to retain and install the item purchased will be deemed acceptance of the specific terms of this Liability Limitation and Release.

The purchaser expressly releases and waives any claim against us for any consequential damages or injury that may arise from the use, or any malfunction, of its product. This Liability Limitation and Release binds the original purchaser, all successors in interest, and all persons to whom the product may subsequently be transferred; and the purchaser agrees to make this limitation known to all such persons. This Liability Limitation and Release is part of the consideration for the sale of the product.

This Liability Limitation and Release is governed by the laws of the State of Florida, United States of America. Any dispute regarding its terms or application is subject to arbitration in the State of Florida at the request of either party to the sale.

WARRANTY

This warranty is limited to the repair or replacement of the defective part only; the warranty specifically excludes labor or consequential damages or injury. The decision as to whether the defective part will be repaired or replaced will rest solely with the manufacturer. The warranty period begins on the date the product is shipped to you.

Full 5-year warranty nontransferable.

This warranty is void if the product is or was improperly installed, abused in any manner. Road or accident damage is not covered.

To make a claim under this warranty, call EPAS Performance to return the defective product, shipping or postage prepaid. Please include a copy of the original purchase invoice and a note describing the circumstances of the failure or malfunction.

This warranty is governed by the laws of the State of Florida, United States of America. Any dispute regarding the coverage of this warranty, its application or terms is subject to arbitration in the State of Florida.

If the purchaser disagrees with any of the terms of this warranty, please return the purchased item within three (3) business days of receipt. A decision by the purchaser to retain and install the item purchased will be deemed acceptance of the specific terms of this warranty.

RETURN POLICY

1. If your shipment arrives in a damaged condition, please notify the carrier immediately.
2. Inspect your order carefully upon receipt. If items are missing, you must contact us within five (5) working days.



EPAS PERFORMANCE
1400 Commerce Blvd, Suite A
Sarasota, FL 34243

1-941-893-5427
1-800-372-7611

www.EPASPerformance.com
Visit our website for installation videos.

