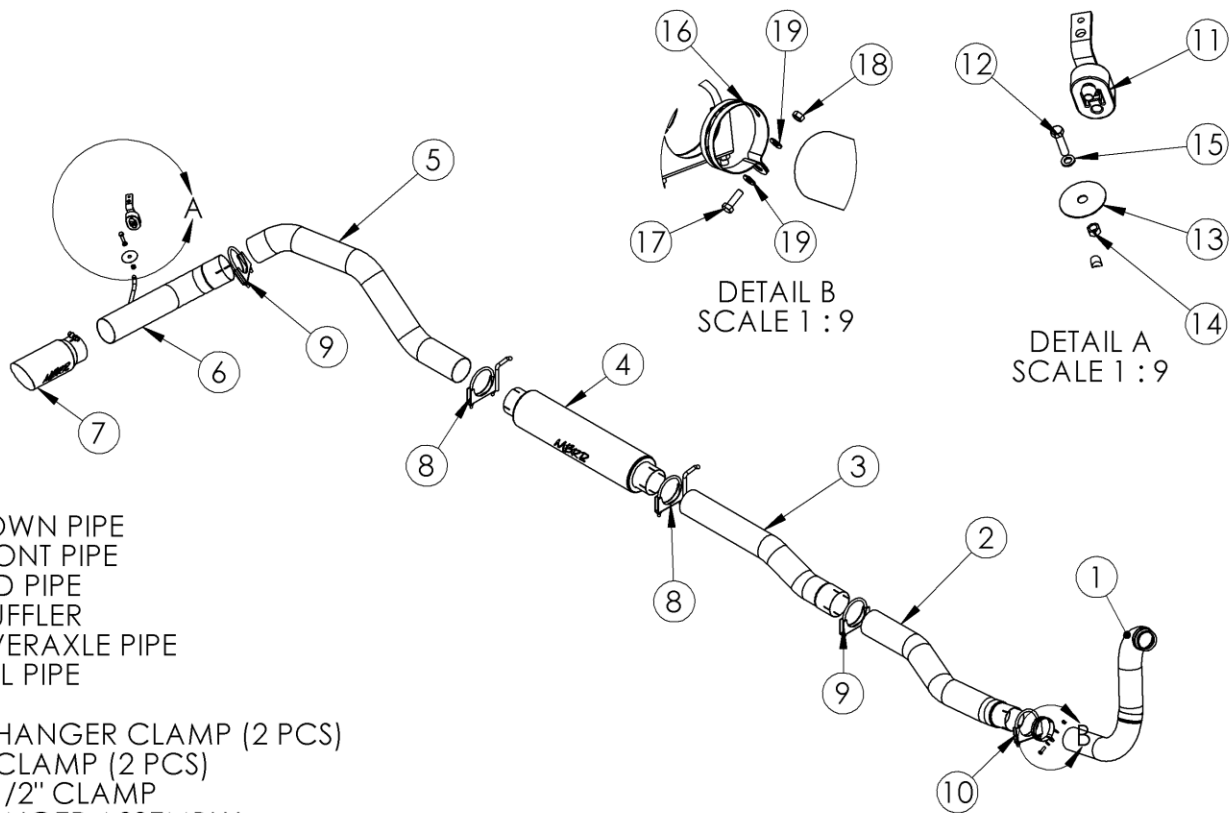


S6148

1989-93 DODGE CUMMINGS 2WD TURBO
BACK - SINGLE SIDE EXIT

MBRP
INC.
PERFORMANCE EXHAUST



1. DOWN PIPE
2. FRONT PIPE
3. MID PIPE
4. MUFFLER
5. OVERAXLE PIPE
6. TAIL PIPE
7. TIP
8. 4" HANGER CLAMP (2 PCS)
9. 4" CLAMP (2 PCS)
10. 3 1/2" CLAMP
11. HANGER ASSEMBLY
12. 3/8" HEX BOLT
13. 7/16" FENDER WASHER
14. 3/8" HEX NUT
15. 3/8" LOCK WASHER
16. 3 1/2" BAND CLAMP
17. 5/16" HEX BOLT
18. 5/16" NYLOC NUT
19. 5/16" FLAT WASHER (2 PCS)

PLEASE READ BEFORE STARTING INSTALLATION

While MBRP Inc. has made every effort to ensure that all components of this system are of superior quality and properly packaged, it is the installer's responsibility to ensure the following before removal of the factory components:

- that ALL components shown above are present.
- that ALL mating components fit together.
- that there are no damaged components.
- that the system you have purchased is appropriate for your vehicle year, model and configuration.
- that the system will not interfere with any modifications previously installed or planned.
- that you have read and understand these instructions.

If you have any questions or are uncertain about any aspect of the installation of this system to your vehicle please contact your dealer before commencing installation.



Figure 1



Figure 2



Figure 3



Figure 4

Removal of Stock System:

1. Apply a penetrating lubricant liberally to all exhaust fasteners, hangers and rubber insulators.
2. Remove the exhaust system from the rubber insulators and remove all of the clamps from the system. **See Figures 1, 2 & 4.**
3. Separate the slip joint behind the muffler and remove the tail pipe. Finally loosen the band clamp connecting the down pipe to the turbo and remove the down pipe. **Do not discard the band clamp as it is required for the installation. See Figure 3.**
4. The hanger and bracket can be removed and returned to the customer. **Refer to Figure 4.**



Figure 5

Installation of MBRP Inc. Performance Exhaust:

1. Install the **Down Pipe** in the same position as the stock down pipe attaching the flared end to the turbo using the stock band clamp. Do not fully tighten until all components are in place. The **3 ½” Band Clamp** is used to attach the **Down Pipe** to the existing mount. **Refer to Figure 5.**



Figure 6

2. Install the **Front Pipe** onto the **Down Pipe** using the **3 ½” Clamp**. **Refer to Figure 6.**

3. The **Extension Pipe** is then connected to the **Front Pipe** using a **4” Clamp**. The **Extension Pipe** may require trimming depending on the vehicle’s wheelbase. **Refer to Figure 7.**

Installation Tip: Temporarily install the **Muffler** and **Tail Pipe** using the factory rubber insulators and the **4” Hanger Clamps**. Measure from the **Muffler** to the **Extension Pipe** to determine the length required (leave 3” overlap to slide into the muffler). Cut the **Extension Pipe** to the required length.



Figure 7

4. Install the **Muffler** over the required **Extension Pipe** so that the exhaust will flow smoothly over the louvers. Attach the **Muffler** using the **4” Hanger Clamps**. Install the **4” Hanger Clamps** into the existing rubber isolators. **Refer to Figure 7.**

5. Install the **Over Axle Pipe** into the **Muffler**. **Refer to Figure 8.**



Figure 8



Figure 9

6. Install the Hanger Assembly using the hardware provided.
Refer to Figure 9.

6. Install the **Tail Pipe** to the **Over Axle Pipe** using the remaining **4” Clamp**. **Refer to Figure 10.**



Figure 10

7. Install and adjust the **Exhaust Tip** to suit. Tighten the bolt located on the **Exhaust Tip**.

8. Adjust the **Tail Pipe** and check along the whole length of the exhaust system to ensure there is adequate clearance around the fuel and brake lines or any wiring. If any interference is detected relocate or adjust. Start at the front of the exhaust system and begin tightening all connections.

Congratulations! You are ready to begin experiencing the improved power, sound and driving excitement of your MBRP Inc. performance exhaust system. We know you will enjoy your purchase.

