

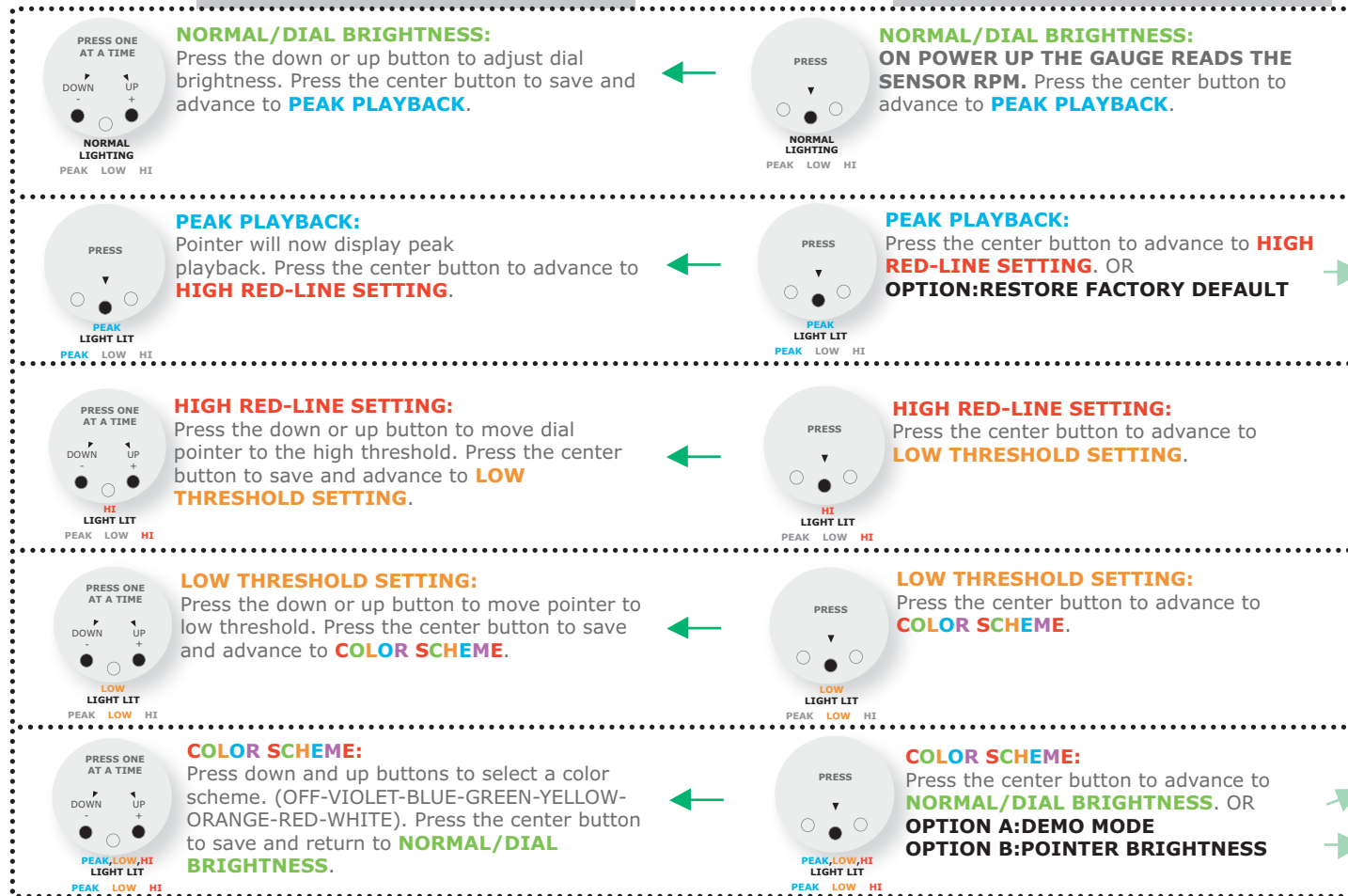
Flow Chart Programming Instructions for : Oil Pressure 2 1/16"

START HERE

PROGRAM MAIN MENU

(Press one button at a time)

MAIN MENU



• **CAUTION:** FOLLOW WIRING INSTRUCTION CAREFULLY. INCORRECT RELAY WIRING WILL LEAD TO PREMATURE NITROUS OXIDE ACTIVATION.

• **WARNING:** INSTALLATION MUST BE PERFORMED BY AN EXPERIENCED TECHNICIAN. SYSTEM MUST BE INSTALLED ACCORDING TO MANUFACTURER RECOMMENDATIONS.

• DISCONNECT THE NEGATIVE BATTERY TERMINAL BEFORE INSTALLATION.

• USE CARE WHEN CONNECTING OR DISCONNECTING THE

WIRING HARNESS. PULL OUT EACH CONNECTOR WHILE PRESSING THE LOCK OF THE CONNECTOR FIRMLY.

• NEVER DISASSEMBLE, MODIFY OR TAMPER WITH THE UNIT.

• PROPARTS,LLC IS NOT RESPONSIBLE FOR INCORRECT TURBOCHARGER SIZING, EXCESSIVE EXHAUST PRESSURE, OR INADEQUATE WASTEGATE OPERATION.

• THIS UNIT IS DESIGNED ONLY FOR DC 12V TYPE VEHICLES WITH NEGATIVE GROUND.

• CHECK THE AIR/FUEL RATIO ONCE THE BOOST PRESSURE IS

SET TO PROTECT AGAINST LEAN FUEL SUPPLY THAT COULD CAUSE ENGINE DAMAGE.

• DO NOT USE BOOST CONTROL IN CONJUNCTION WITH ANY TYPE OF "DRAW THROUGH" FUEL SYSTEM.

• DO NOT ADJUST THE UNIT WHILE DRIVING.

• DO NOT USE THIS UNIT UNDER EXTREMELY HOT OR COLD CONDITIONS.

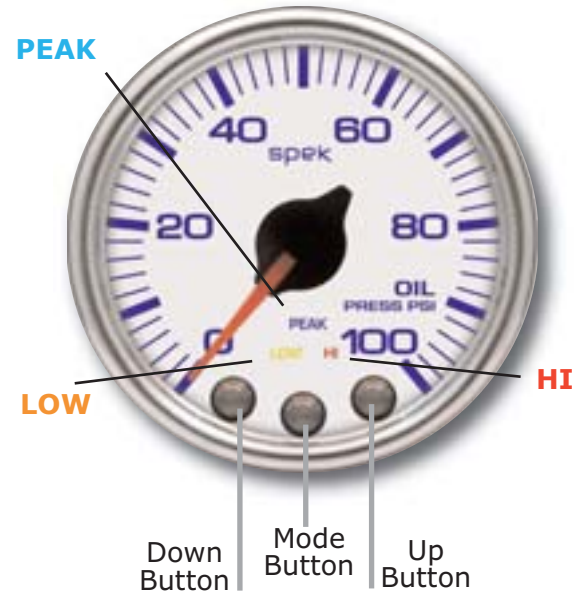
• DISCONTINUE USE OF THIS PRODUCT IF THE GAUGE DOES NOT OPERATE OR A STRANGE ODOR OR SMOKE IS PRESENT.

Flow Chart Programming Instructions for : Oil Pressure 2 1/16"

SUBMENU

(ENTER FROM MAIN MENU)

(Press two(2) buttons simultaneously for 5 seconds)



OPTION:RESTORE FACTORY DEFAULT:

While in **PEAK PLAYBACK**, press and hold the center and right buttons for five seconds. Dial pointer will step five times and return to zero. This will erase all user-programmed calibrations and settings, and return to **NORMAL/DIAL BRIGHTNESS**.

OPTION A:DEMO MODE:

WHILE IN **COLOR SCHEME**, press and hold the center and right buttons for five seconds. Dial will scroll through the seven color schemes. The **HI,LOW** and **PEAK** will light, and the dial pointer will move. Press the center button to return to **NORMAL/DIAL BRIGHTNESS**.

OPTION B:POINTER BRIGHTNESS:

While in **COLOR SCHEME**, press and hold the center and left buttons for five seconds to enter pointer brightness mode. The dial pointer will start to flash and point to the upper right.

OPTION B:POINTER BRIGHTNESS:

Press down and up buttons to adjust the pointer brightness. Press the center button to save and return to **NORMAL/DIAL BRIGHTNESS**.

ProParts, LLC Limited Warranty: ProParts, LLC warrants all merchandise against defects in factory workmanship and material for 12 months from the original purchase date. Proof of purchase is required; otherwise the warranty period shall default to 12 months from date of manufacture as indicated by the date code on the product. This warranty applies to the first retail purchaser and covers only those products exposed to normal use or service. This warranty excludes items used for purpose to which it is not designed, or which has been altered in any way that would be detrimental to the performance or life of the product by misapplication, misuse, negligence or accident. When it is determined by ProParts, LLC after examination that a product is defective, ProParts, LLC will repair, replace

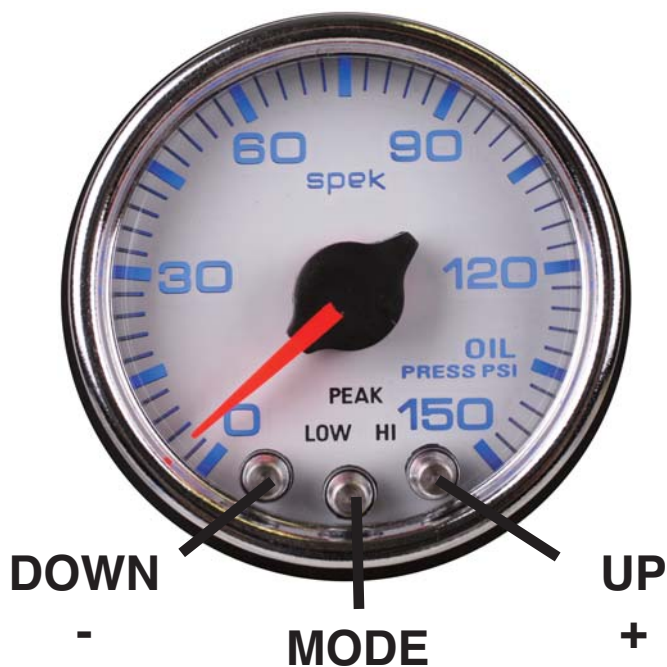
or issue credit for that product through the original selling dealer or by direct basis. In no event shall this warranty exceed the original price of the product. ProParts, LLC assumes no responsibility for diagnosis, removal and/or installation labor, loss of vehicles use, loss of time, inconvenience or any other consequential expense. ProParts, LLC disclaims any liability for consequential damage due to breach of any written or implied warranty on all products manufactured by ProParts,LLC. The purchaser or user of any products distributed, sold or manufactured by ProParts, LLC assumes all risk related to and/or arising from the ownership or use of said product and agrees to indemnify and hold ProParts,LLC harmless from any and all claims brought by any person or entity against ProParts, LLC related to

and/or arising from ownership and/or use of said product. Return goods authorization: Warranty returns will only be accepted by ProParts, LLC when accompanied by a valid return good authorization (rga) number. Product must be received by ProParts, LLC within 30 days of the date the rga is issued. Before a rga can be issued, the installer or end user must contact ProParts, LLC's technical department to discuss the problem. Any out of warranty ProParts, LLC products can be returned for repair. There is a minimum charge of \$50.00 for inspection and diagnosis. ProParts, LLC will provide an estimate of repairs and receive written authorization before repairs are made to the product.

Programming Instructions for : Oil Pressure 2 1/16" Monitor & Controller

SPEK™ MONITOR AND CONTROL

Refer to the "Flow Chart Programming Instructions" while reviewing this guide. Gauge is field programmable by the operator while installed in the vehicle. This programming is accessed by pressing the control buttons located on the face or the meter dial, **ONE AT A TIME**. The "Down" and "Up" buttons move the pointer to a desired setting or controls the faceplate illumination.



MAIN MENU	SUBMENU
PRESS "MODE" BUTTON TO PROGRAM LEVEL. THEN PRESS BOTH CENTER AND LEFT OR CENTER AND RIGHT BUTTONS FOR 5 SECONDS TO ENTER SUB MENU.	
NORMAL/DIAL BRIGHTNESS	
PEAK PLAYBACK	OPTION: RESTORE FACTORY DEFAULT
HIGH RED-LINE SETTING	OPTION: SET WATER METHANOL INJECTION TEMPERATURE
LOW THRESHOLD SETTING	OPTION: SET MINIMUM LEVEL OF (BOOST) FOR INJECTION OPTION: SET LEVEL OF (BOOST) WHERE INJECTION TAKES PLACE OPTION: SET THRESHOLD ALERT SIGNAL
COLOR SCHEME	OPTION A: DEMO MODE OR OPTION B: POINTER BRIGHTNESS

Programming Instructions for : Oil Pressure 2 1/16" Monitor & Controller

PROGRAMMING STARTS IN MAIN MENU

PRESS PROGRAM BUTTON ONE (1) AT A TIME IN THE **MAIN MENU** MODE.

1 **NORMAL/DIAL BRIGHTNESS:**

On power up, the meter usually starts operation in **NORMAL/DIAL BRIGHTNESS**. Gauge reads the sensor value as temperature, pressure, etc. The "Down" and "Up" buttons will control the brightness of the dial lighting. Press the center "Mode" button to save the setting and advance you to **PEAK PLAYBACK**

2 **PEAK PLAYBACK:**

Reads the highest value displayed on the meter since the last time the "**PEAK**" value was displayed. Pressing the "Down" or "Up" control button will control the gauge dial illumination. Press the center "Mode" button to advance to **HIGH RED-LINE SETTING**

3 **HIGH RED-LINE SETTING:**

Sets the point at which "HIGH" warning threshold is reached for that specific gauge. The "Down and "Up" buttons will move the dial pointer to select **HIGH RED-LINE SETTING**. During normal operation the gauge constantly monitors the sensor value and compares it to the "HIGH" threshold. If the threshold is exceeded, the red "**HI**" indicator is turned on. Press the center "Mode" button to save the setting and advance to **LOW THRESHOLD SETTING**

4 **LOW THRESHOLD SETTING:**

Set the Minimum Threshold: Sets the point at which "**LOW**" warning threshold is reached for that specific gauge. The "Down" and "Up" buttons will move the dial pointer to select the **LOW THRESHOLD SETTING**. During normal operation the gauge constantly monitors the sensor value and compares it to the "**LOW**" threshold. If the sensor value drops below the threshold, the yellow "**LOW**" indicator is turned on. Press the center "Mode" button save the setting and advance to

5 **COLOR SCHEME**

5 **COLOR SCHEME:**

Set Faceplate Color Scheme: Operator can select the color of the gauge dial illumination. Each time you press the "Down" control button you scroll through dial color selection until the dial light goes off. Then press the "Up" button to reverse the scroll. Select your dial color illumination by pressing the center "Mode" button to save the setting and advance to **NORMAL/DIAL BRIGHTNESS**

Programming Instructions for : Oil Pressure 2 1/16" Monitor & Controller

SUBMENU

SUBMENU IS ACCESSED THROUGH THE **MAIN MENU**. FIRST GO TO THE APPROPRIATE LEVEL OF THE **MAIN MENU** AND THEN FOLLOW THE INSTRUCTIONS IN THE PROGRAMMING FLOW DIAGRAM TO ENTER THE **SUBMENU**. PRESS THE "MODE" AND "UP" OR "MODE" AND "DOWN" BUTTONS SIMULTANEOUSLY FOR 5 SECONDS TO ENTER THE **SUBMENU** AND ONE BUTTON AT A TIME WHILE IN THAT **SUBMENU**.

OPTION:RESTORE FACTORY DEFAULT: Activation of the Default will erase all field calibration setup settings that are programmed. Factory calibrations will not be affected.

OPTION A:DEMO MODE: Displays the features of the meter. The pointer goes up and down the scale, the dial colors change and the **HI**, **LOW** and **PEAK** warning indicators light. The **DEMO MODE** does not time out. If the gauge is turned off in the **DEMO MODE**, it will start up in the **DEMO MODE**. Press the "Mode" button to return the gauge to NORMAL operation.

OPTION B:POINTER BRIGHTNESS MODE: The "Down" and "Up" buttons adjust the dial pointer brightness to blend in with original manufacturer's gauges and the owner's requirements. Press the "Mode" button to return the gauge to **NORMAL/DIAL BRIGHTNESS..**

CRITICAL CONDITION ALERT/OUTPUT SIGNAL: The dial faceplate will flash "**Red**" and an output signal generated when the programmed "Threshold Setting" is reached. This setting can be "**HIGH**" or "**LOW**" depending upon the gauge function. That is; a temperature gauge would flash "**Red**" when a "**HIGH**" temperature setting is reached while an oil pressure gauge would flash "**Red**" when the "**LOW**" pressure setting is reached. The operator can turn off this signal through the gauge program. See the PROGRAMMING FLOW CHART. From the main menu press the center mode button 3 times. The "**LOW**" LED will light.You are now in the "LOW THRESHOLD SETTING."

OPTION: THRESHOLD ALERT SIGNAL: While in "Low Threshold Setting: press and hold the center and left buttons for five seconds. Dial pointer will step five times and then go to zero or the twelve o'clock position. Select alert signal status: The alert signal is deactivated if the pointer is at the twelve o'clock position. Pressing the left button selects alert signal "ON". Pressing the right button selects alert signal "OFF"

Programming Instructions for : Oil Pressure 2 1/16" Monitor & Controller

GAUGE CRITICAL CONDITION ALERT/OUTPUT GUIDE

GAUGE TYPE	ALERT FLASHES "RED"
TEMPERATURE	HIGH
PRESSURE	LOW
TACHOMETER	HIGH
PYROMETER	HIGH
NITROUS OXIDE PRESSURE	LOW
BOOST PRESSURE	HIGH
AIR/FUEL	LOW
VOLTMETER	LOW

PROGRAMMING INFORMATION:

- TO RESET THE PROGRAM TO **NORMAL OPERATION** FROM ANY MODE PRESS THE "UP" AND "DOWN" BUTTONS SIMULTANEOUSLY. THIS SOFT RESET CANCELS THE INFORMATION YOU PROGRAMMED IN THAT MODE ONLY AND RETURN YOU TO **NORMAL OPERATION**.
- THE FACEPLATE WILL "FLASH" WHEN BUTTONS ARE DEPRESSED TO ACKNOWLEDGE COMMANDS.
- PROGRAMMING ERRORS WILL BE SIGNALLED BY FLASHING THE FACEPLATE LIGHTING "**PURPLE**", "**BLUE**", "**GREEN**" THEN "**ORANGE**".
- IF PROGRAMMING IS INACTIVE FOR 120 SECONDS THE MODE WILL TIME OUT AND THE GAUGE WILL RETURN TO NORMAL OPERATION, EXCEPT FOR IN THE DEMONSTRATION MODE. THE DEMO MODE WILL NOT TIME OUT UNTIL THE CENTER "MODE" BUTTON IS PRESSED. IF THE GAUGE IS TURNED OFF IN THE DEMO MODE, IT WILL START-UP IN THE DEMO MODE.
- TO RESTORE FACTORY DEFAULTS, PRESS THE "MODE" BUTTON ONCE TO ENTER THE **PEAK PLAYBACK**. THEN PRESS AND HOLD THE "MODE" AND "UP" BUTTONS FOR FIVE SECONDS. YOUR PROGRAMMING WILL BE ERASED BUT FACTORY PROGRAM WILL NOT BE AFFECTED.