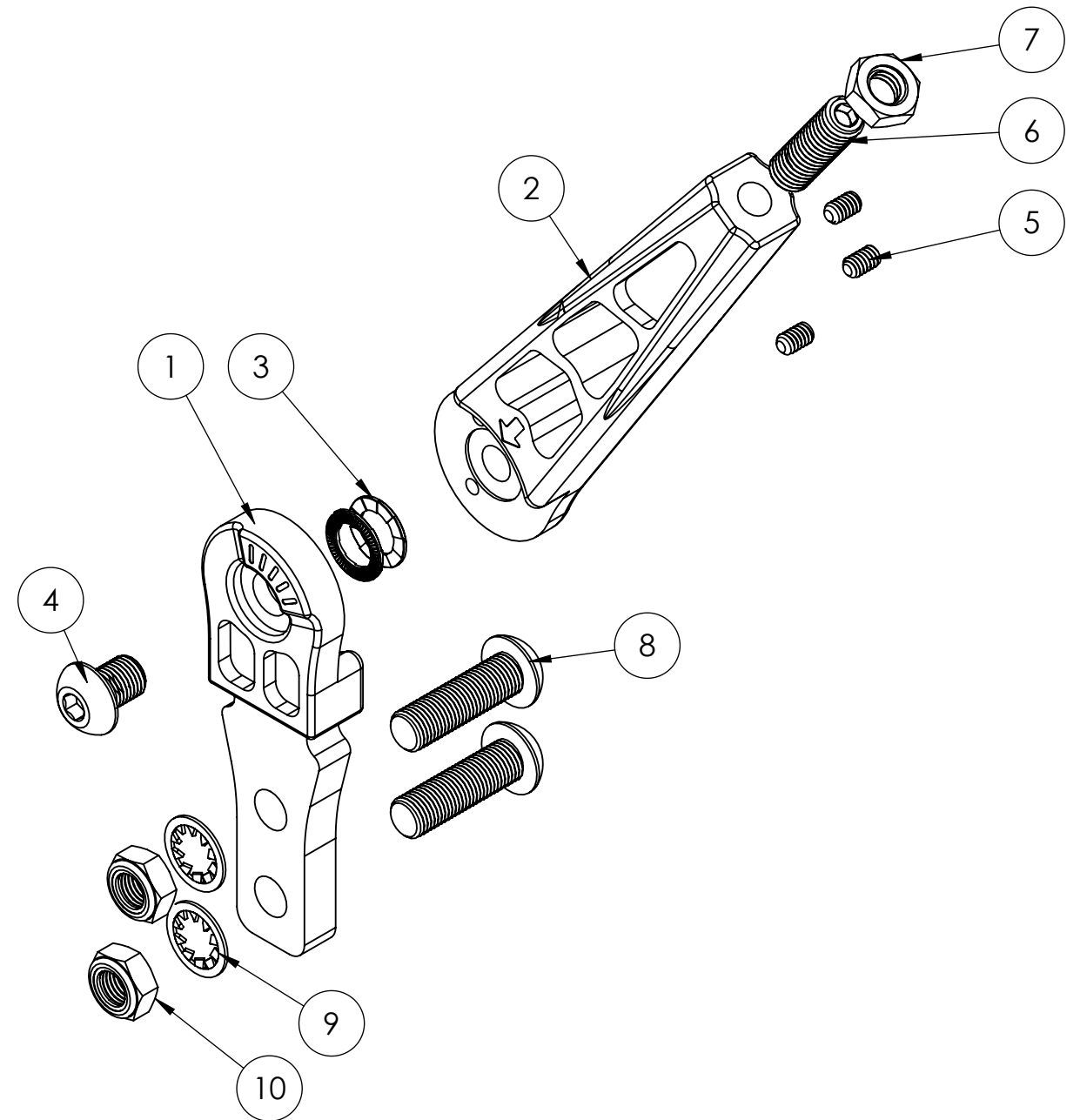
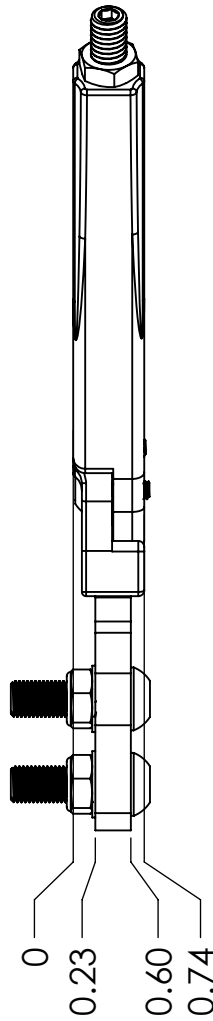
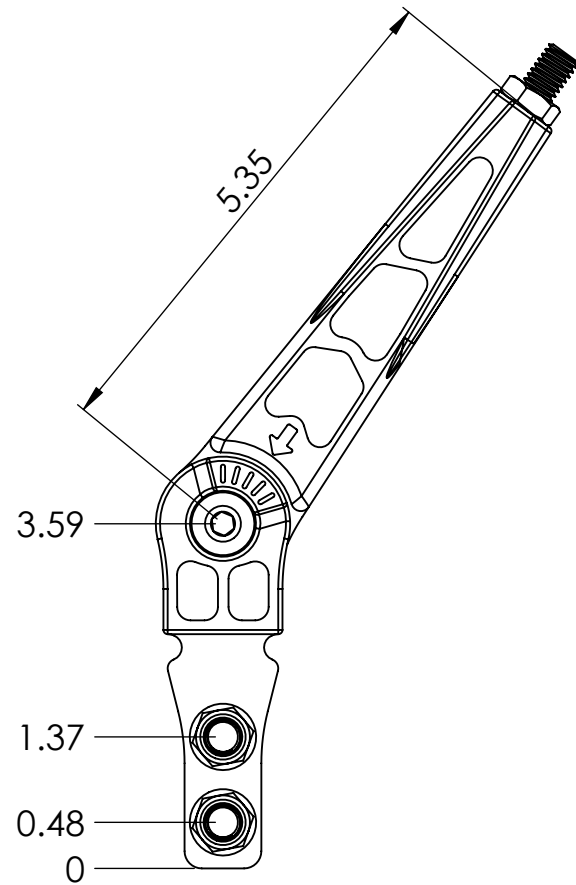


ITEM NO.	PART NUMBER	DESCRIPTION	QTY.
1	99000-4614_001	SCALE	1
2	99000-4614_002	ARROW	1
3	91812A231	3/8 NORD LOCK WASHER	1
4	92949A347	3/8-24 X 1/2 BUTTON HEAD CAP SCREW	1
5	92311A239	10-24 X 5/16 CUP POINT SCREW	3
6	92311A626	3/8-16 X 1 1/4 CUP POINT SET SCREW	1
7	91847A031	3/8-16 THIN HEX NUT	1
8	91255A647	3/8-24 X 1 1/4 BUTTON HEAD CAP SCREW	2
9	91113A031	3/8 INTERNAL TOOTH LOCK WASHER	2
10	90566A220	3/8-24 NYLON LOCK NUT	2
11	0610931	FASTENAL VIBRA TITE 2ML	1



NOTES: **LINES 6-11 ARE BAGGED IN QTY. LISTED**

1- CUSTOMER APPLY THREAD LOCKER TO FASTENERS 4 & 5 UPON INSTALLATION

SOLIDWORKS

MATERIAL: 6061		UNLESS OTHERWISE SPECIFIED: ALL DIMENSIONS ARE IN INCHES. DIMENSIONS IN [] ARE IN MM. FRACTIONS: $\pm 1/16$ DECIMALS: .x $\pm .05$.xx $\pm .02$.xxx $\pm .005$ ANGLES: MACHINED $\pm 0^{\circ} 30'$ OTHERS $\pm 2^{\circ}$ CONCENTRICITY: .010 BREAK CORNERS: .015 - .030 FILLET RADIUS: .030 - .060 SURFACE FINISH: 125 RMS		RINGBROTHERS			
COATING:		THIS DOCUMENT CONTAINS INFORMATION WHICH IS PROPRIETARY TO RINGBROTHERS. THE INFORMATION CONTAINED HEREIN SHALL NOT BE DISCLOSED, DUPLICATED, USED IN WHOLE OR IN PART FOR ANY PURPOSE OTHER THAN TO EVALUATE THIS DOCUMENT WITHOUT WRITTEN CONSENT OF RINGBROTHERS.		99000-4614			
DRAWN: RYAN SCHWARTZ		DATE: 2-21-17		3RD ANGLE PROJECTION			
ENGR: MATT MOSEMAN		DATE: 2-21-17		DO NOT SCALE			
PR MGR: MATT MOSEMAN		DATE: 2-21-17		DWG. NO. 99000-4614			
eSIGNATURES ON FILE		SCALE: NTS		WEIGHT: SHEET 1 OF 1			
				REV A			