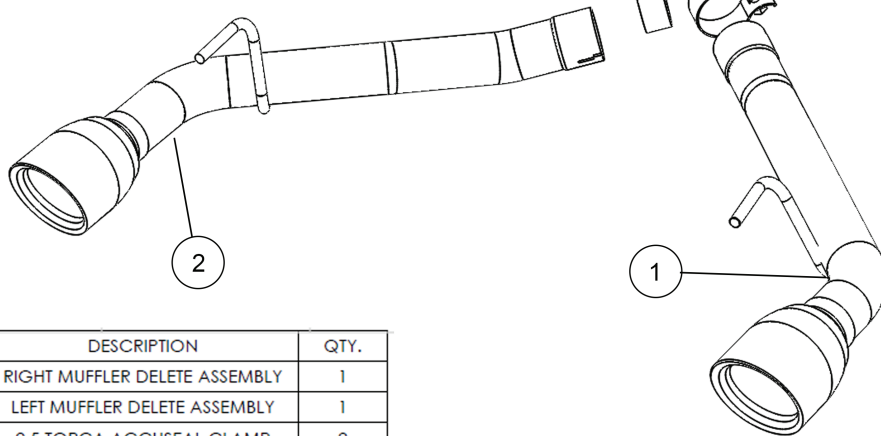


PART# 700110

2010-2013 Camaro SS 6.2L Eliminator System

Bill Of Materials



TECHNICAL SUPPORT
973-513-9955
Monday through Friday
9AM-4PM EST

email
tech@quicktimeperformance.com

ITEM NO.	DESCRIPTION	QTY.
1	RIGHT MUFFLER DELETE ASSEMBLY	1
2	LEFT MUFFLER DELETE ASSEMBLY	1
3	2.5 TORCA ACCUSEAL CLAMP	2

Tools Required:
15mm Socket Ratchet
Sawzall Tape Measure
Spray lubricant

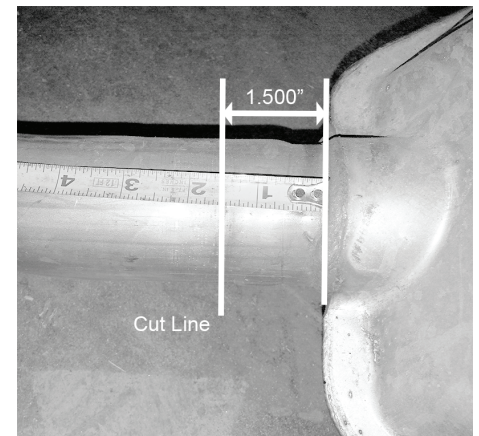
Caution! Never work on a hot exhaust system. Burns or other serious injuries can result. Always allow the exhaust system to cool before removal. Always consult vehicle manual for proper lifting and support guidelines. Always wear approved safety glasses when working. Serious injury or death can result if safety precautions are not followed.

Removal of factory equipment:

Step 1: Raise and support Vehicle. Using a tape measure mark the tube 1.5" from the weld seam of the rear mufflers, Mark both sides. Take your time to ensure this measurement is properly marked. (Figure 1)

Step 2: Spray the rear factory hangers with spray lubricant. Using a sawzall or other cutting tool cut the tubes at the marks from step 1. Square the cut to the tube centerline.

Step 3: Carefully remove each muffler by removing the hangers from the rubber isolators. Once removed deburr the cut end of the remaining factory exhaust with a file. It is critical to remove all burrs as they may keep the new pipes from slipping over the factory exhaust.



Installation of new exhaust

Step 4: Slide a 2.5" Torca accuseal clamp onto the end of each delete pipe.

Step 5: Slide the expanded end of the delete pipe over the factory exhaust. Spray some lubricant onto the hanger rod and slip it into the factory rubber isolators. Repeat for other side

Step 6: Slide the accuseal clamps into position, center the exhaust tip in the rear valence opening and snug exhaust clamps. Check final position and torque exhaust clamps to 35 ft-lbs. Note: it may be necessary to readjust the exhaust and retighten the clamps after the initial 20 mile drive cycle.

Note: After initial startup a small trace of smoke may be visible from the exhaust, do not be concerned. This is from residual oils left in the tube from the manufacturing process and will dissipate quickly.

Quick Time Performance recommends professional installation on all of our products.