



99-02 GM K1500 Single Steering Stabilizer Part # 7196

PARTS LIST		
ITEM#	DESCRIPTION	QTY
7500WS	WHITE STEERING DAMPER	1
B12RS	RED BOOT	1
BTIE	RED BOOT TIE	1
HSS	HYDRO SHOCK DECAL	1
HB-7196	HARDWARE BAG FOR 7296	1
I-7196	INST. SHEET FOR 7296	1

HARDWARE BAG LISTING		
ITEM#	DESCRIPTION	QTY
83037	MAIN CENTER LINK BRACKET	1
C966DSST-S	GM 1/2T,DUAL STAB TAB BRKT	1
140629	STEERING STAB STUD PACKAGE	1
516X114X134U	5/16 X 1 1/4 X 1 3/4 U-BOLT	2
516CTN	516-18 COARSE N/I LOCK NUT	4
516SAEW	5/16 SAE WASHER	4
38X1TCFB	3/8 X 1 THRD-CUTTER FLANGE BLT	1
142120	STEERING STAB WASHER PKG.	1
HOURGLASS 5/8	HOURGLASS 5/8 SHOCK BUSHING	1
STEM BUSH-SST	STEM BUSHING-STEERING STAB.	2

(Park the vehicle on level ground with the tires pointing straight forward).

1. While supporting the front cross member with floor jack, remove the front lower A-Arm bolt at the frame. (If installing on a vehicle with 4" of more lift, it will be the upper front bolt on the after market cross member. Remove the bolt using 15/16 socket. (See Photo #1).
2. Once bolt is removed, reinstall with new outer stabilizer bracket. Be sure to install bolt pointing toward the front. Drill inside mounting hole using 5/16 drill bit. Then install 3/8 thread cutter bolt. (See Photo #2). Arrow shows drill bit.
3. Attach shock stud to bracket being sure to use washers. (See Photo #3).
4. Install main bracket to center steering link using (2) 516X114X134 U-Bolts with washers and lock nuts. Measure from center of pitman arm 9". Mount the drivers side edge of the center link bracket at this point. Slightly adjust the main bracket, as needed, so that the stabilizer is pulled out half way. (See Photo #5).
5. Attach the stabilizer shock to the outer bracket and the center link bracket. (See Photo #4 and #5).
6. Once steering stabilizer is installed, check all brackets and bolts for proper installation. Cycle steering left to right and check all parts for adequate clearance. retighten all hardware after the first 100 miles.

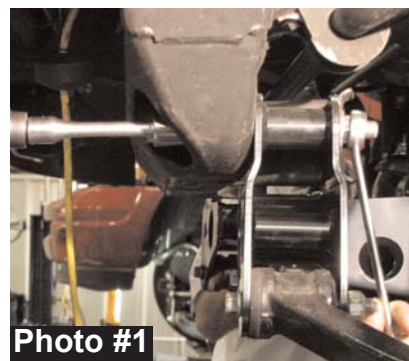


Photo #1

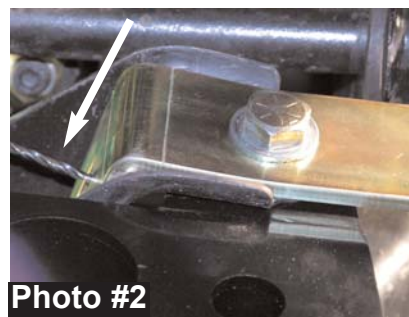


Photo #2

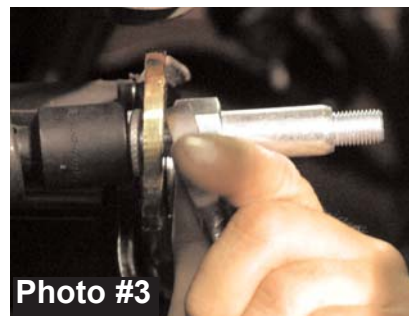


Photo #3

Seat Belts Save Lives, Please Wear Your Seat Belt.

* This steering stabilizer kit is designed for the 99-02 GM 1/2 ton 4WD. It will fit lift heights 4-6" on kits with lowered front cross member. This kit will **NOT** work on vehicles with a lift kit that relocates the upper A-Arms.



Photo #4

I-7196 5-03

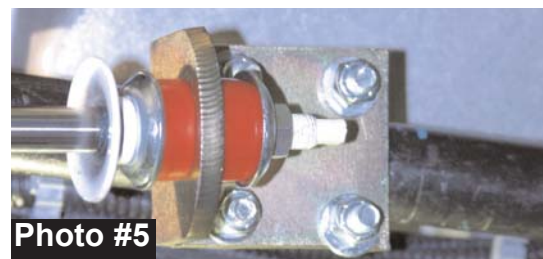


Photo #5