



**Toyota FJ Cruiser 3”
Performance Series Strut Kit
Installation Guide
Part# FJ730ST**

Part #	Description	Qty
530STS	Toyota Front Strut	2
FJ25R	2.5" REAR COILS FJ	1
SBE702	END LINKS REAR	1 pr



IMPORTANT NOTES

-Skyjacker strongly advises taking extreme caution when working with loaded coil springs to prevent accident or harm.

Instructions:

Front:

1. With vehicle on flat level ground, set the emergency brake and block the rear tires.
2. Raise the front of vehicle in the center of the front cross member using a floor jack.
3. Support the vehicle on the frame cross member so that the front tire/wheels are off the ground. Remove front wheels.
4. Remove the ABS line from the upper A-Arms using 10mm wrench. (See Photo #1) Disconnect ABS/Brake line from steering knuckle.
5. Remove sway bar end links using 17mm. (See Arrow in Photo #2)
6. Remove cotter pin from outer tie rod. Disconnect tie rod using 12 mm socket. (See Photo #3)
7. Remove cotter pin from upper ball joint, remove using 19mm socket. (See Photo #4)
8. Locate lower shock mounting bolt. Remove lower shock mounting bolt using 19mm socket. (See Photo #5)
9. Disconnect upper shock assembly from frame using 14mm wrench. (See Photo #6)
10. Remove factory strut assembly.

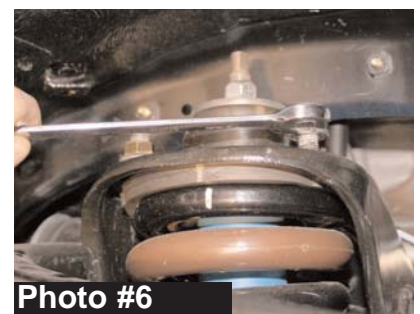
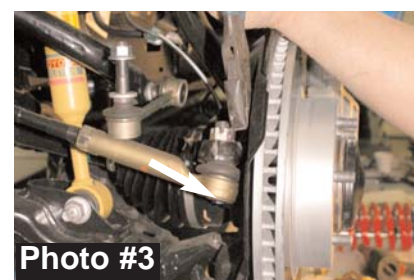
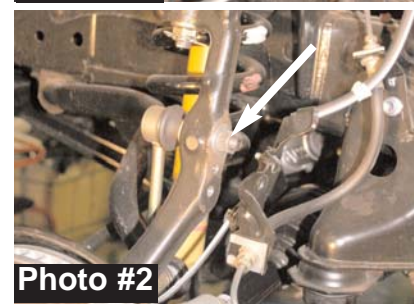


Photo #4
I-FJ730ST 7-07

Photo #5

Photo #6

11. Using a coil spring compressor, remove the upper retaining nut, upper coil seat and the coil from the factory shock. (See Photo #7).
12. Using coil spring compressor, reassemble using the Skyjacker Performance strut. (See Photo #8). Factory upper stem bushings will be re-used. Re-assemble strut assembly and torque upper nut to oe specs.
13. Attach strut assembly to the lower A-Arm using the factory hardware. Install bolt from the rear, towards the front. (See Photo #9)
14. Attach the upper strut mount to the frame using the factory hardware. Re-Attach upper A-Arm to the steering knuckle. It may be necessary to use a pry bar to pull the A-Arm down far enough to re-attach.
14. Reattach ABS line/Brake line and sway bar end links. (See Photo #10) Reinstall front tires/wheels and lower vehicle to the ground.

Rear:

15. Raise the rear of the vehicle and properly support frame rails using jack stands.
16. Remove tires and wheels. (See Photo #11). Remove rear shocks.
17. It will be necessary to disconnect the brakeline brackets and sway bar end link from the axle to allow for installation of the new rear coils. Disconnect the track bar from the frame. (See Photo #12).



Photo #7



Photo #8

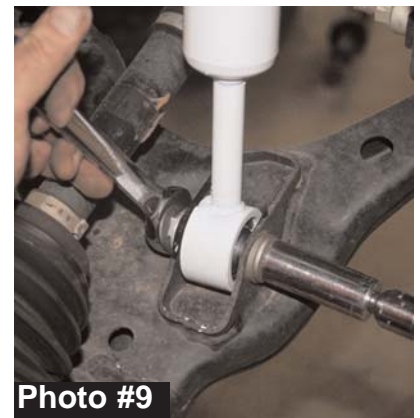


Photo #9



Photo #10

I-FJ730ST

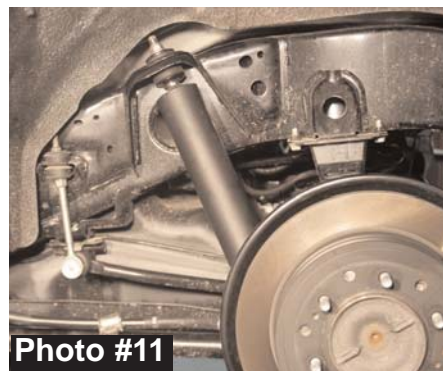


Photo #11

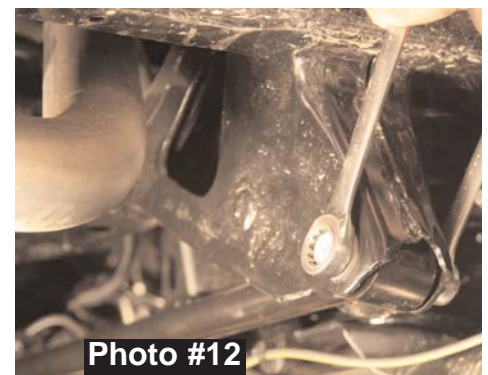


Photo #12

18. Remove factory coil spring and replace with new Softride® rear coil springs. Be sure to retain the upper bump stop as shown. (See Photo #13)
20. Re-Attach track bar and brakelines. Install new Skyjacker sway bar end links. Install using the bushings and hardware supplied. (See Photo #14)
21. Install new rear shocks. (See Arrow in Photo #15)
22. Install tires/wheel and lower vehicle to the ground

FINAL NOTES:

- * After installation is complete, double check that all nuts and bolts are tight.
- * Check to ensure there is adequate clearance between All rotating, mobile and fixed members. Check clearance between inner side wall of tires.
- * Ensure there is adequate clearance between exhaust and brake lines, fuel lines, fuel tank, floor board, and wiring harnesses. Check steering gear for interference and proper working order. Inspect brake lines for damage and adequate clearance. Test brake system.
- * With the vehicle on the floor, cycle steering lock to lock and inspect steering, suspension, drive line and brake line systems for proper operation, tightness and adequate clearance.
- * Front end realignment is necessary so have a qualified alignment center realign front end to factory specifications.

