



www.skyjacker.com

2018 Jeep Wrangler JL 2.5" Metal Spacer Suspension Lift Installation Instructions

Required Tools List:

- Safety Glasses
- Metric & Standard Sockets / Wrenches
- Pliers
- Hex Key Sockets / Wrenches
- Floor Jack
- Jack Stands
- Measuring Tape
- Torque Wrench



Before beginning the installation, read these instructions & the enclosed driver's WARNING NOTICE thoroughly & completely. Also affix the WARNING decal in the passenger compartment in clear view of all occupants. Please refer to the Parts List to insure that all parts & hardware are received prior to disassembly of the vehicle. If any parts are found to be missing, contact SKYJACKER® Customer Service at 318-388-0816 to obtain the needed items. If you have any questions or reservations about installing this product, contact SKYJACKER® Technical Assistance at 318-388-0816.

Make sure you park the vehicle on a level concrete or asphalt surface. Many times a vehicle is not level (side-to-side) from the factory, but is usually not noticed until a lift kit has been installed which makes the difference more visible. Using a measuring tape, measure the front & rear (both sides) from the ground up to the center of the fender opening above the axle. Record this information below for future reference.

Driver Side Front: _____

Passenger Side Front: _____

Driver Side Rear: _____

Passenger Side Rear: _____

Important Notes:

- The drag link must be adjusted to center the steering wheel before the vehicle is driven. Failure to do so will cause computer errors, odd handling characteristics, & poor performance.
- If larger tires (10% more than the OEM diameter) are installed, speedometer recalibration will be necessary. Contact your local Jeep dealer or an authorized dealer for details.
- After installation, a qualified alignment facility is required to align the vehicle to the OEM specifications.

Component Box Breakdown:

Part #: JL25MSB

Item #	Description	Qty
JL25FMS-S	JL FRONT METAL SPACER	2
JL25RMS-S	JL REAR METAL SPACER	2
JL25SEF-S	JL FRONT SHOCK EXTENSION	2
JL25SER-S	JL REAR SHOCK EXTENSION	2
JL20RBS-S	JL REAR BUMP STOP SPACER	2

Item #	Description	Qty
SBE4058-L	JL REAR SWAY BAR END LINK	2
HB-JK20	HDWR BAG: JL BUMP STOPS	1
HB-JL25MSB	HDWR BAG: JL SPACERS / EXT	1
HB-JLSBER	HDWR BAG: JL REAR END LKS	1
I-JL25MSB	INST SHEET: JL25MSB	1

Hardware Bag Breakdown:

Part # HB-JK20

Item #	Description	Qty
38X234BHB	3/8 X 2 3/4 BUTTON HEAD BOLT	2
38SAEW	3/8 SAE WASHER	2
38CTN	3/8 COARSE THREAD LOCK NUT	2
516X1FTB	5/16 X 1 FINE THREAD BOLT	4

Item #	Description	Qty
516SAEW	5/16 SAE WASHER	8
516FTN	5/16 FINE THREAD LOCK NUT	4
BSS3020-S	JL FRONT BUMP STOP SPACER	2

Part # HB-JL25MSB

Item #	Description	Qty
JL25RMS-WASH	JL REAR SPACER WASHER	2
12X312FTB	1/2 X 3 1/2 FINE THREAD BOLT	4
12X212CTB	1/2 X 2 1/2 COARSE THRD BLT	2
12X114FTB	1/2 X 1 1/4 FINE THREAD BOLT	2
12SAEW	1/2 SAE WASHER	8
12USSW	1/2 USS WASHER	4
12FTN	1/2 FINE THREAD LOCK NUT	6

Item #	Description	Qty
38X1FTB	3/8 X 1 FINE THREAD BOLT	2
38SAEW	3/8 SAE WASHER	4
38FTN	3/8 FINE THREAD LOCK NUT	2
516X1CTB	5/16 X 1 COARSE THREAD BOLT	2
516LW	5/16 LOCK WASHER	2
516CTSN	5/16 COARSE THREAD STD NUT	2
411481	ES27 / ES28 SLEEVE	4

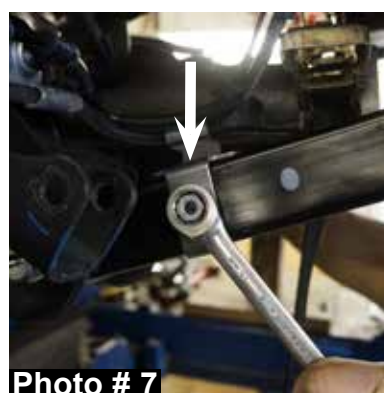
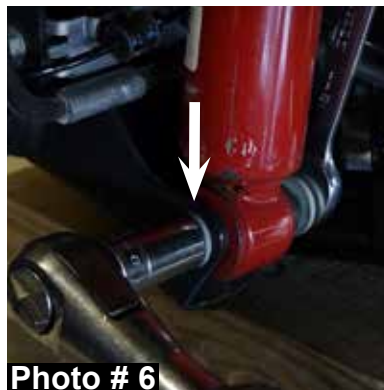
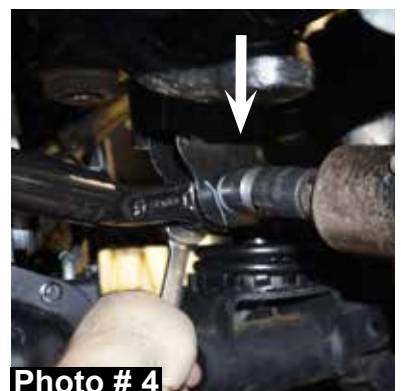
Part # HB-JLSBER

Item #	Description	Qty
HG5815-K	HOURGLASS 5/8 BUSHING / BLK	4
141509	ES25 SLEEVE	4
12X65BHB	12MM X 65MM BUTTON HD BLT	2

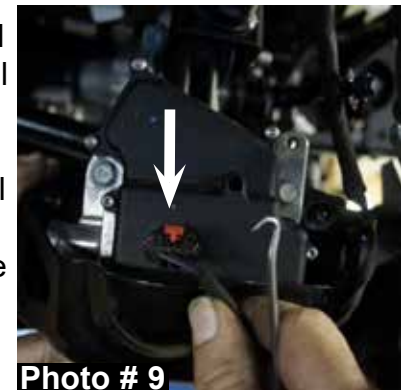
Item #	Description	Qty
716USSW	7/16 USS FLAT WASHER	4
12MMN	12 MM METRIC LOCK NUT	2

Front Installation:

1. With the vehicle on flat level ground, set the emergency brake, & block the rear tires / wheels.
2. Raise the front of the vehicle, support the frame rails, & front differential using jack stands.
3. Remove the front tires / wheels using a 22mm socket. (See Photo # 1)
4. Remove the OEM front skid plate using a 13mm socket / wrench. (See Photo # 2)
5. Remove the OEM front sway bar end links using a 6mm hex key socket / wrench & 18mm socket / wrench. (See Photo # 3) **Note:** Save the OEM hardware. It will be reused later for Step # 4 of the rear installation.
6. Disconnect the OEM front track bar from the frame using a 21mm socket / wrench. (See Photo # 4)
7. Disconnect the OEM drag link from the OEM pitman arm using a 21mm socket / wrench. (See Photo # 5)
8. Disconnect the OEM front shocks from the front differential using a 18mm socket / wrench. (See Photo # 6)
9. Disconnect the OEM front brake line brackets from the OEM front lower control arms using a 15mm socket / wrench. (See Photo # 7)



10. Mark the location of the OEM front driveshaft / flange at the front differential & disconnect using a 15mm socket / wrench. (See Photo # 8)
11. Disconnect the wiring harness from the passenger side OEM front upper control arm using pliers.
12. Disconnect the wiring harness from the OEM 4wd acuator. (See Photo # 9)
13. Disconnect the OEM vent hose from the front differential using pliers.
14. While checking for appropriate slack in ABS lines, brake lines, differential vent hose, & etc. Lower the front differential & remove the OEM front coil springs & OEM front coil spring isolators.
15. Install the new Skyjacker front coil spring spacers with the OEM front coil spring isolators under the new front coil spring spacers using the supplied 5/16" x 1" coarse thread bolts, 5/16" lock washers, 5/16" coarse thread nuts, & a 1/2" socket / wrench. (See Photo # 10) **Note:** Be sure when installing the OEM front coil spring isolators that the tabs of each OEM front upper coil spring isolator aligns with the holes of each new front coil spring spacer.
16. Install the OEM front coil springs & new Skyjacker front bump stop spacers to the OEM front bump stop pads using the supplied 3/8" x 2 3/4" button head coarse thread bolts, 3/8" SAE washers, 3/8" coarse thread nuts, a 7/32" hex key socket / wrench, & 9/16" socket / wrench. (See Photo # 11)
17. Install the new Skyjacker front lower shock extension brackets to the OEM front lower shock mounts with the upper mounting holes offset towards the front of the vehicle using the supplied 3/8" x 1" fine thread bolts, 3/8" SAE washers, 3/8" fine thread nuts, crush sleeves, 1/2" x 3 1/2" fine thread bolts, 1/2" SAE washers, 1/2" fine thread nuts, a 9/16" socket / wrench, & 3/4" socket / wrench. (See Photo # 12)



18. Raise the front differential in order to load the OEM front coil springs & connect the OEM front shocks to the new Skyjacker front lower shock extension brackets using the OEM hardware & a 18mm socket / wrench. (See Photo # 13)



19. Connect the OEM front driveshaft using the OEM hardware & a 15mm socket / wrench. (See Photo # 8)

20. Connect the OEM drag link to the OEM pitman arm using the OEM hardware & a 21mm socket / wrench. (See Photo # 5)

21. Connect the OEM vent hose to the front differential using pliers.

22. Connect the wiring harness to the OEM 4wd actuator. (See Photo # 9)

23. Connect the wiring harness to the passenger side OEM front upper control arm.

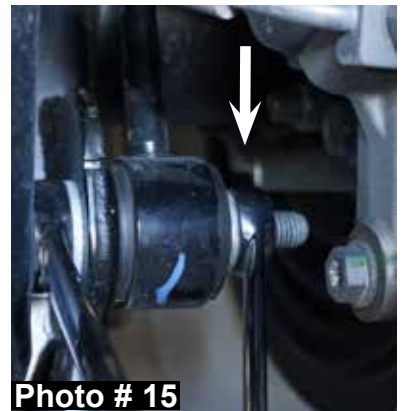
24. Connect the OEM front brake line brackets to the OEM front lower control arms using the OEM hardware & a 15mm socket / wrench. (See Photo # 7)



25. Install the OEM front skid plate using the OEM hardware & a 13mm socket / wrench. (See Photo # 2)

26. Install the front tires / wheels using a 22mm socket & lower the front of the vehicle to the ground. (See Photo # 1)

27. Connect the OEM front track bar to the frame using the OEM hardware & a 21mm socket / wrench. (See Photo # 4) **Note:** Slightly turning the steering wheel will help align the OEM front track bar with the frame mount.



Rear Installation:

1. Block the front tires / wheels, raise the rear of the vehicle, support the frame rails, & rear differential using jack stands.

2. Remove the rear tires / wheels using a 22mm socket. (See Photo # 14)

3. Remove the OEM rear sway bar end links using a 6mm hex key socket / wrench & 18mm socket / wrench. (See Photo # 15)

4. Install the OEM rear sway bar end links to the front of the vehicle using the OEM hardware saved from Step # 5, a 6mm hex key socket / wrench, & 18mm socket / wrench. (See Photo # 3)

5. Disconnect the OEM rear track bar from the frame using a 21mm socket / wrench. (See Photo # 16)
6. Disconnect the OEM rear shocks from the rear differential using a 18mm socket / wrench. (See Photo # 17)
7. Disconnect the OEM rear brake line brackets from the rear differential using a 13mm socket / wrench. (See Photo # 18)
8. While checking for appropriate slack in ABS lines, brake lines, differential vent hose, & etc. Lower the rear differential & remove the OEM rear coil springs & OEM rear coil spring isolators.
9. Install the new Skyjacker rear bump stop spacers to the OEM rear bump stop pads using the supplied 5/16" x 1" fine thread bolts, 5/16" SAE washers, 5/16" fine thread nuts, & a 1/2" socket / wrench. (See Photo # 19) **Note:** When installed, the longest angle on top of the new rear bump stop spacers face toward the front of the vehicle.
10. Install the new Skyjacker rear coil spring spacer washers on top of the OEM upper coil spring mounts. (See Photo # 20)
11. Install the new Skyjacker rear coil spring spacers using the supplied 1/2" x 2 1/2" coarse thread bolts & a 3/4" socket / wrench. (See Photo # 21)



Photo # 16



Photo # 17

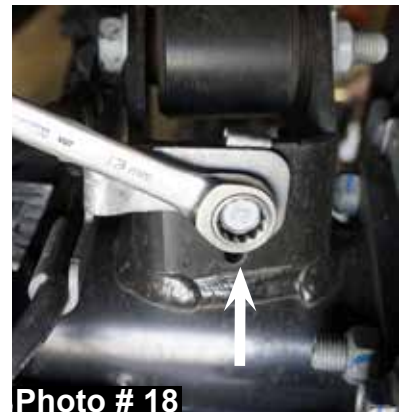


Photo # 18

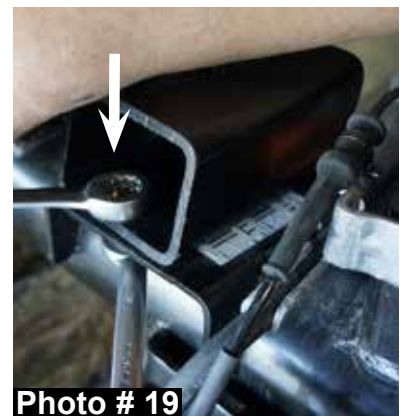


Photo # 19

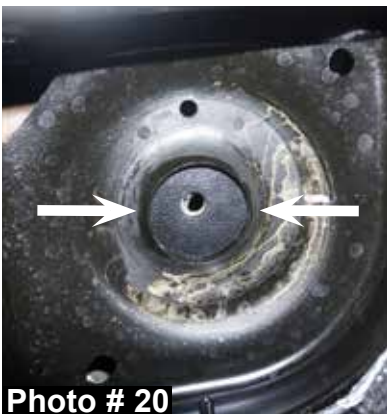


Photo # 20

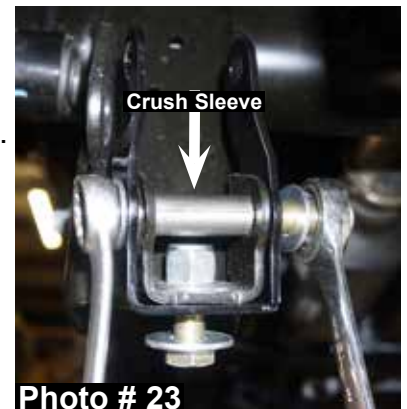


Photo # 21

12. Install the OEM rear coil spring isolators & OEM rear coil springs. (See Photo # 22) **Note:** Be sure when installing the OEM rear coil spring isolators that the tab of each OEM rear upper coil spring isolator aligns with the hole of each new rear coil spring spacer.



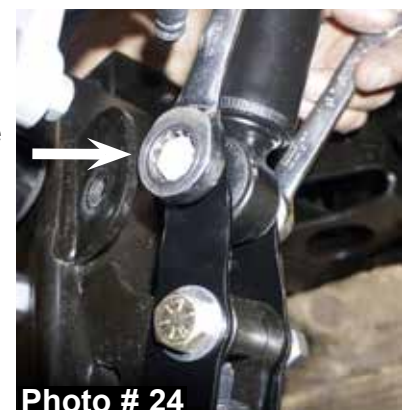
13. Install the new Skyjacker rear lower shock extension brackets to the OEM rear lower shock mounts with the upper mounting holes offset towards the front of the vehicle using the supplied 1/2" x 1 1/4" fine thread bolts, 1/2" USS washers, crush sleeves, 1/2" x 3 1/2" fine thread bolts, 1/2" SAE washers, 1/2" fine thread nuts, & a 3/4" socket / wrench. (See Photo # 23)



14. Raise the rear differential in order to load the OEM rear coil springs & connect the OEM rear shocks to the new Skyjacker rear lower shock extension brackets using the OEM hardware & a 18mm socket / wrench. (See Photo # 24)

15. Connect the OEM rear brake line brackets to the rear differential using the OEM hardware & a 13mm socket / wrench. (See Photo # 18)

16. Install the new Skyjacker rear sway bar end links using the supplied polyurethane bushings, crush sleeves, 12mm x 65mm button head bolts, 7/16" USS washers, 12mm nuts, OEM hardware, a 5/16" hex key socket / wrench, & 18mm socket / wrench. (See Photo # 25)



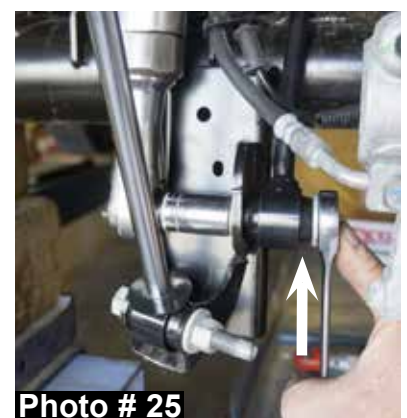
Note: Install the new upper end link button head bolts from the outside of the vehicle inward & the OEM lower bolts with the large washer to the bushing side of the new rear sway bar end links.

17. Install the rear tires / wheels using a 22mm socket & lower the rear of the vehicle to the ground. (See Photo # 14)

18. Connect the OEM rear track bar to the frame using the OEM hardware & a 21mm socket / wrench. (See Photo # 16)

Final Notes:

- After the installation is complete, double check that all nuts & bolts are tight. Refer to the following chart for the proper torque specifications. (Do not retighten the nuts & bolts where thread lock compound was used.)
- With the vehicle placed on the ground, cycle the steering lock to lock & inspect the steering, suspension, brake lines, front & rear drivelines, fuel lines, & wiring harnesses for proper operation, tightness, & adequate clearance.



- Have the headlights readjusted to the proper settings.
- Have a qualified alignment center align the vehicle to the OEM specifications.
- After the first 100 miles, check all hardware for the proper torque & periodically thereafter.

TORQUE SPECIFICATIONS					
INCH SYSTEM			METRIC SYSTEM		
Bolt Size	Grade 5	Grade 8	Bolt Size	Class 8.8	Class 10.9
5/16	15 FT LB	20 FT LB	6MM	5 FT LB	9 FT LB
3/8	30 FT LB	35 FT LB	8MM	18 FT LB	23 FT LB
7/16	45 FT LB	60 FT LB	10MM	32 FT LB	45 FT LB
1/2	65 FT LB	90 FT LB	12MM	55 FT LB	75 FT LB
9/16	95 FT LB	130 FTLB	14MM	85 FT LB	120 FT LB
5/8	135 FT LB	175 FT LB	16MM	130 FT LB	165 FT LB
3/4	185 FT LB	280 FT LB	18MM	170 FT LB	240 FT LB

- The above specifications are not to be used when the bolt is being installed with a bushing.

Optional Front Adjustable Track Bar Available:

JLFTBA18 Front Adjustable Track Bar / 1"- 4" Lift

Optional HD OEM Replacement Steering Stabilizers Available:

7008 HD OEM Replacement Steering Stabilizer - White Steering Damper
 8008 HD OEM Replacement Steering Stabilizer - Black Steering Damper
 9008 HD OEM Replacement Steering Stabilizer - Silver Steering Damper

Optional Dual Steering Stabilizer Kits Available:

7208 Dual Steering Stabilizer Kit - White Steering Dampers
 8208 Dual Steering Stabilizer Kit - Black Steering Dampers
 9208 Dual Steering Stabilizer Kit - Silver Steering Dampers

Optional HD Front / Rear Upper & Lower Control Arms Available:

JL24LL HD Front & Rear Lower Control Arms - Set / 1"- 4" Lift
 JL24LLX Single Flex Front & Rear Lower Control Arms - Set / 1"- 6" Lift
 JLL24F-SX Single Flex Front Lower Control Arms - Pair / 1"- 6" Lift
 JLL24R-SX Single Flex Rear Lower Control Arms - Pair / 1"- 6" Lift
 JLULF26-SX Single Flex Front Upper Control Arms - Pair / 1"- 6" Lift
 JLULR26-SX Single Flex Rear Upper Control Arms - Pair / 1"- 6" Lift



As of February 21, 2018 Skyjacker is proud to have passed the rigorous FMVSS No.126 testing requirements on all Jeep Wrangler JL lift systems. FMVSS No.126 is the National Highway Traffic Safety Administration (NHTSA) that is established for the Federal Motor Vehicle Safety Standard (FMVSS) No.126 requiring all new passenger vehicles under 10,000lbs GVWR that include an Electronic Stability Control (ESC) system through a series of evasive lane-change maneuvers at highway speeds to ensure the driver can maintain control in critical driving situations. The main objective behind this mandate is to reduce the risk of rollovers among passenger vehicles. Skyjacker has a number of our lift systems tested to prove compliance with the FMVSS No.126 mandate. These Skyjacker systems are proven to work in harmony with the Electronic Stability Control (ESC) system. Through SEMA & the advanced testing technology by Link Engineering that involves robotic steering & outrigger equipment Skyjacker has demonstrated compliance with these safety standards.

Seat Belts Save Lives, Please Wear Your Seat Belt.



**Jesus Forgives,
Rocks Don't**

Jesus Christ Died For You.

John 3:16

For God so loved the world that He gave His only Son, so that everyone who believes in Him should not perish, but have everlasting life.
Romans 3:23

For all have sinned; all fall short of God's glorious standard.
Ephesians 2:8

God saved you by his special favor when you believed. And you can't take credit for this; it is a gift from God.
Psalms 18:2

The Lord is my Rock, my fortress, and my savior; my God is my Rock, in whom I find protection. He is my shield, the strength of my salvation, and my stronghold.
Romans 10:9-10

That if you shall confess with thy mouth the Lord Jesus, and shall believe in your heart that God hath raised him from the dead, you shall be saved. For with the heart man believeth unto righteousness; and with the mouth confession is made unto salvation.

Pray This Simple Prayer:

God, I come to You admitting I have sinned against You and I need you to take control of my life. The Bible says anyone who calls on the name of the Lord will be saved. I am calling on You, Jesus. I ask that You come live in my heart and be the Lord over my life today. I do believe You died on the cross for me and came back to life to give me life! Thank You, Lord Jesus for a new life in You!

Now, go and tell somebody about your new life in Jesus, get a Bible, begin to read it, and go to a Bible believing church.

If you would like someone to pray with you, call Kenneth Copeland Ministries anytime at 800-600-7395.

To listen to commercial free Christian radio on the web, go to www.887fm.org

Jesús murió por ti.

Juan 3:16

“Porque tanto amó Dios al mundo, que dio a su Hijo unigénito, para que todo el que cree en él no se pierda, sino que tenga vida eterna.”
Romanos 3:23

“Pues todos han pecado y están privados de la gloria de Dios.”
Efesios 2:8

“Porque por gracia ustedes han sido salvados mediante la fe; esto no procede de ustedes, sino que es el regalo de Dios.”
Salmos 18:2

“El Señor es mi roca, mi amparo, mi libertador; es mi Dios, el peñasco en que me refugio. Es mi escudo, el poder que me salva, ¡mi más alto escondite!”
Romanos 10:9-10

“9 Que si confi esas con tu boca que Jesús es el Señor, y crees en tu corazón que Dios lo levantó de entre los muertos, serás salvo. 10 Porque con el corazón se cree para ser justificado, pero con la boca se confía esa para ser salvo.”

Ahora dí esta simple oración:

Dios, vengo a Ti y admito que he pecado contra Ti, necesito que tomes el control de mi vida. La Biblia dice que todo aquel que invoca el nombre del Señor escapará con vida. En este momento yo clamo ante Ti, Jesús; te pido que vengas a vivir en mi corazón y que tomes el control de mi vida. ¡Yo creo que tu moriste en la cruz y resucitaste para darme vida! ¡Gracias Señor Jesús, por una nueva vida que tengo en Ti! Amen.

Ahora ve y dile a alguien sobre la nueva vida que tienes en Cristo. Compra una Biblia y empieza a leerla. Busca una Iglesia que cree en la Biblia y hazte parte de esa Iglesia.

Si te gustaría orar con alguien, puedes llamar a este número 800-600-7395

Puedes ir a este sitio de Internet para escuchar música Cristiana sin anuncios, www.887fm.org

Check out our favorite ministries at:

www.innministries.org

www.familychurch.org

www.kcm.org

