

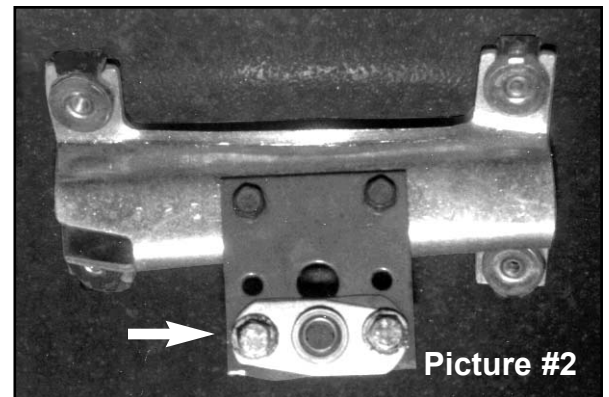
**Instruction for
TCL101 / TCL151
TCL103 / TCL153 / TCL25**

SKYJACKER®
THE BEAR OF SUSPENSIONS

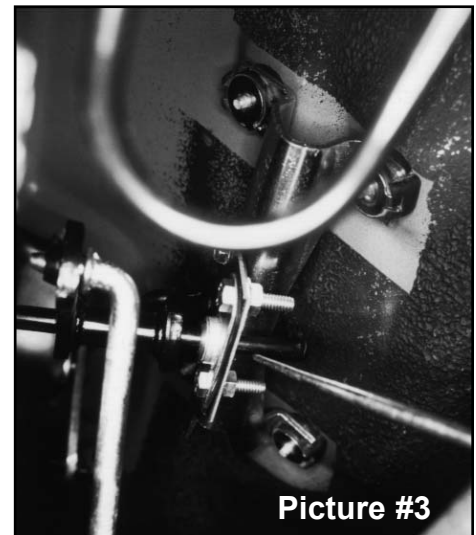
1. On Wrangler TJ models remove the 4 screws that mount the transfer case pivot assembly from the body of the vehicle (it will be necessary to roll floor mat back to gain access to the bolts under the driver's side transmission tunnel).
2. Remove the 3 bolts on each side of transfer case skid plate and lower down enough to install new square tube spacers between skid plate and frame. 1987-02 models use the flat socket head bolts supplied. **(2003 models will use the 12mm bolts and washers supplied)**. Also apply a few drops of supplied thread lock compound on bolt threads prior to installing. Tighten bolts to 75-80 ft.lbs. (Picture #1)



- * **On 2003 models, also remove the 2 engine skid plate bolts. Install the small square tube spacers at the mounting points on the frame rails, along with the 12mm bolts supplied. 2.5" kits will use the 1" square tube spacers. 4" kits will use the 1.5" spacer.**



3. On Wrangler TJ models install the new transfer case linkage pivot drop bracket to stock pivot pivot bracket using stock screws. Using the two 1/4 x 1" bolts with a flat washer and self locking nut, bolt the ball swivel bracket (arrow in picture #2) to new drop bracket (bracket now has two sets of holes: bottom holes for 4" lift as shown or next to bottom for 2 1/2" lift). Placing pivot bracket back in location, start end of rod through ball swivel. Now bolt bracket into location with original hardware (Picture #3).



NOTE: Wrangler YJ owners, perform step #2 only.