



**1994-2003 Jeep Cherokee
Transfer Case Lowering Kit
Part # TCL31**

Contents:

Part #	Description	Qty
TCL114SX6-S	TRANS CS LWR 1 1/4"X2X6-SGL	2
10MMX60MMB	10 X 60 METRIC BOLT/10.9	2
38X1CTBG5	3/8 X 1 CRSE THRD BLT,GRD 5	2
38CTN	3/8-16 COARSE N/I LOCK NUT	2
38SAEW	3/8 SAE WASHER	6
TCL24-B	TRANS CASE LNKG BRACKET	1
14X1FTB	1/4 X 1 FINE THD BOLT G8	2
14FTN	1/4-28 FINE N/I LOCK NUT	2
14SAEW	1/4 SAE WASHER	2

Installation Instruction:

1. Park Vehicle on flat, level surface. Block the front and rear tires.
2. Place the transmission in neutral.
3. Loosen all of the engine mount bolts about 1/2 turn.
4. Support the transfer case cross member with a transmission floor jack. Remove the bolts and the nuts for each side of the cross member.
5. Slowly lower the cross member, approximately 2", to allow enough room to install the new tubular spacers.
6. Install new tubular spacers between cross member and frame. Slowly raise the jack up to firmly hold the tubular spacers in place.
7. Install the OEM factory nuts, removed from step 4, onto the studs that are protruding out of the frame on each side to hold the top 1/2 of the new spacers in place. NOTE: There is only 1 stud on each side protruding out of the frame. Next, install the 3/8 x 1 bolt on each side through the cross member and the bottom 1/2 of the new tubular spacers. Install the 3/8 nut and washer and hand tighten.
8. Now install the new 10mm x 60mm bolt up through cross member and tubular spacer and tighten to 33 ft. lbs.
9. Tighten the 3/8 nut down onto the 3/8 x 1 bolt from step 6 to 33 ft-lbs.
10. Remove the transmission jack and set aside.
11. Re-torque the engine mount bolts loosened in step 3. The engine mount to block bolts; torque to 45 ft-lbs./ The engine mount to frame bolts; torque to 30 ft-lbs./ The thru bolts; torque to 48 ft-lbs.
12. Now install the transfer case linkage bracket. See back of this page for instructions.

TRANSFER CASE PIVOT BRACKET:

1. Install the new transfer case linkage pivot drop bracket to stock pivot pivot bracket using stock screws. Using the two 1/4 x 1" bolts with a flat washer and self locking nut, bolt the ball swivel bracket (arrow in photo #1) to new drop bracket (bracket now has two sets of holes: bottom holes for 4" lift as shown or next to bottom for 2 1/2" lift).
2. Placing pivot bracket back in location, start end of rod through ball swivel. Now bolt bracket into location with original hardware (photo #2).
3. Check to make sure that the transfer case will fully engage at each end of the shifter travel. If linkage adjustment id required, see next step.
4. Check the transfer case shifter to see if it will move to 4l. If not, the linkage will need adjusting as follows. Place the shifter in 4l, loosen adjustment bolt ("a" arrow in picture #18), and push the linkage ("b" arrow in picture #18) forward until it stops. Now retighten adjustment bolt. Check to be sure 4wd works properly.
5. On 5 speed models, engage the clutch and check the transmission shifter to see if it will go into 2nd gear. If not, the shifter housing on the floor will need trimming. Remove center console, pull back carpet, remove the screws holding shifter boot to floor and trim or grind floor board at arrow in picture #19 until sufficient clearance is obtained. Shift through each gear to check clearance at this time. Now reinstall boot, carpet and console.

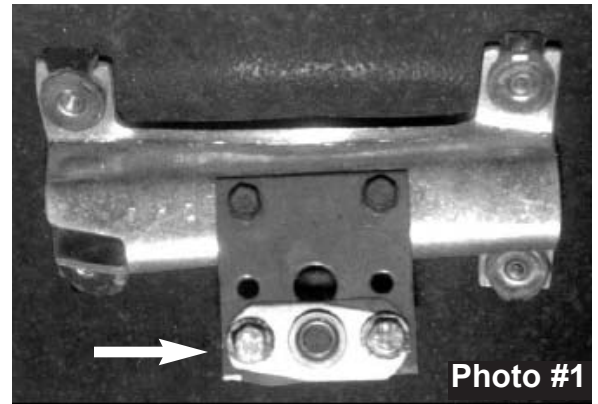


Photo #1

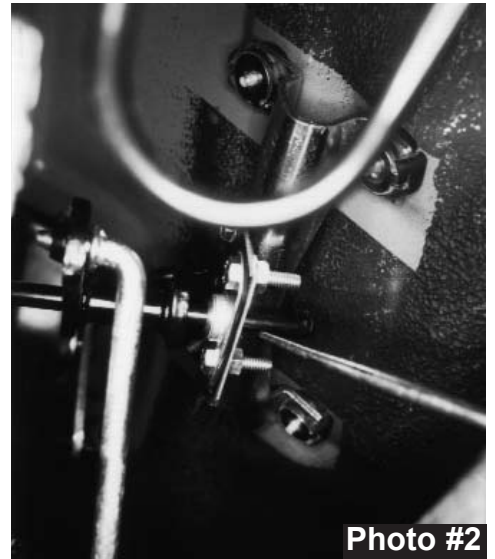


Photo #2



Photo #3

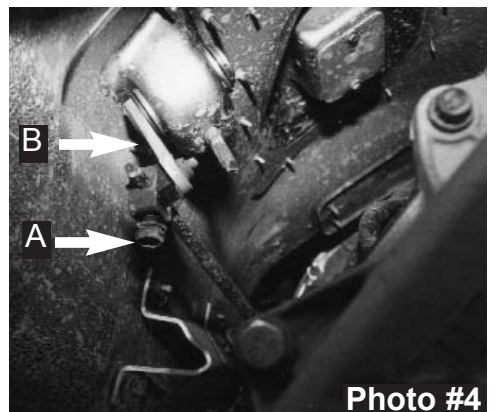


Photo #4

Seat Belts Save Lives, Please Wear Your Seat Belt.