

SLOT PUNCH KIT

Instruction Sheet

This part should only be installed by personnel who have the necessary skill, training and tools to do the job correctly and safely. Incorrect installation can result in personal injury, vehicle damage and / or loss of vehicle control.

Plan Ahead - Read All Instructions BEFORE using tool

Punching a slot:

1. Clean and grease punch draw-stud thread and cutting surfaces before each use for maximum tool service life.

2. Install slot punch and draw-stud as shown through pilot hole in material to be punched. **See Figure 1.**

NOTE: Maximum material punching thickness is 0.135".

3. Install die block onto draw-stud and finger tighten draw-nut threads until punch points begin to bite into material.

NOTE: Ensure punch points are aligned as needed for your slot direction.

4. Using **HAND TOOLS ONLY**, tighten draw-nut to perforate material.

NOTE: Use of impact driver or other power tools to draw punch through material will damage tool and void warranty.

CAUTION: DO NOT OVER DRAW punch into die block. When punching is complete, punch cutter tool will pull through newly created slot for easy removal.

5. Unthread draw-stud from draw-nut and clear trimmed material from die block recess.

NOTE: Clear trimmed material from die block after each punch. Die block must be empty before punching.

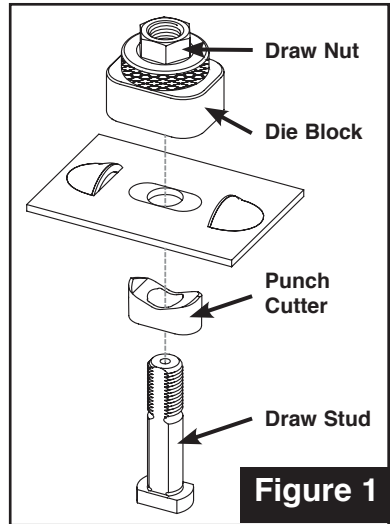


Figure 1

Maintenance Procedures:

- Lubrication is essential for tool service life. Clean and grease draw-stud threads and punch before each use.
- To grease thrust bearing, disassemble draw-nut from die block.
 1. Thread draw-stud without punch into draw-nut until flush with top of nut.
 2. Firmly grasp die block with draw-stud head down and strike assembly down onto a hard surface so that draw-nut will pop up off die block top.
 3. Thoroughly clean bearing and bearing track surfaces. Re-pack bearing with liberal amounts of grease.
 4. Re-assemble draw-nut to die block with bearing and circlip. A pair of small flathead screwdrivers or pick set may aid reassembly of circlip under draw-nut skirt.



Check out how to use this tool at: <http://www.spc-tv.com>



Specialty Products Company®

4045 Specialty Pl. • Longmont, CO 80504 • (303) 772-2103 • Fax: (303) 772-1918

Toll Free Technical Hot Line: 1-800-525-6505 • www.specprod.com ECN#2552

For warranty information go to: www.specprod.com/warranties • Email: info@specprod.com

©2018 Niwot Corp. dba Specialty Products Co • Printed in U.S.A. • Form No.74920INS • Rev. 7/18