

ROUGH COUNTRY

SUSPENSION SYSTEMS®

97-03 FORD TORSION BAR KEYS & BLOCK KIT

Thank you for choosing Rough Country for your suspension needs.

Rough Country recommends a certified technician install this product. Please read instructions before beginning installation.

NOTICE TO DEALER AND VEHICLE OWNER

Any vehicle equipped with any Rough Country product should have a "Warning to Driver" decal installed on the inside of the windshield or on the vehicle's dash. The decal should act as a constant reminder for whoever is operating the vehicle of its unique handling characteristics.

We hope installing your Rough Country lift kit is a positive experience. If you are uncertain about some aspect of the installation process, please feel free to call our tech support department at 800-222-7023. We do not recommend that you modify the Rough Country parts in any way as this will void any warranty expressed or implied.



Tools Needed:
18mm Socket / Wrench
21mm Socket/ Wrench
22mm Socket / Wrench

INSTALLATION INSTRUCTIONS

1. With the truck parked on a clean, dry, and level surface set the parking brake. Chock the rear wheels. Using a floor jack raise the front of the truck and support the frame rail with approved jack stands. **NEVER WORK UNDER AN UNSUPPORTED VEHICLE.**
2. Using a 22 mm socket remove the lug nuts on the front wheels and remove the front wheels.
3. Measure the amount of thread showing on the torsion bar adjuster bolts. **See Photo 1.** Drivers Side _____
 Passenger Side _____ Using a 18mm socket remove the adjuster bolt.
4. Remove the shock absorbers using a XX wrench. Retain factory hardware for reuse.
5. Using a Ford approved torsion bar tool as shown in Photo 2 to relieve the pressure from the adjuster bolt and treaded adjuster block. **See Photo 2.**

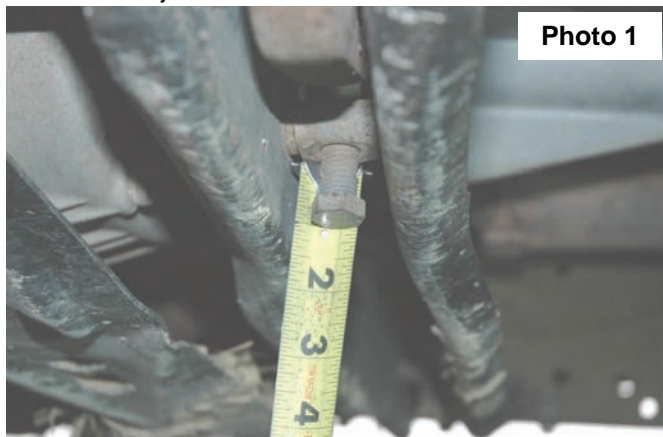


Photo 1



Photo 2

6. After the pressure has been removed from the torsion bar adjuster, remove the bolt and adjuster block. **See Photo 3.** Slide the torsion bar forward to release the stock torsion bar key. **Note. Use care when removing the adjuster block to keep fingers clear of the adjuster block hole in the cross-member. It may be necessary to apply a penetrating oil to the torsion bars to free them from the torsion bar adjusters.**



Photo 3

7. Install the new torsion bar adjusters as the stock was removed making sure to install the torsion bar keys in the correct position on the torsion bar. The keys should hang slightly lower on the torsion bar than the stock key.
8. Using the Ford approved torsion bar tool install the torsion bar adjusters and adjuster nuts. Using a 18 mm socket set the torsion bars to factory measurement as recorded earlier in the installation.
9. Longer shocks are recommended for this kit. If purchased with the kit, assemble the shock absorbers and install in the factory location using the factory hardware.
10. Reinstall the wheels and tires and tighten wheels using a 22mm socket and lower the vehicle to the ground.
11. **Measurement from the center of the front wheel to the bottom of the fender, with the vehicle on the ground, should be 23.5"- 24" max.**

REAR BLOCK INSTALLATION

1. Chock the front tires and jack up the rear of the vehicle. Place the vehicle on jack stands under the frame rail and lower the vehicle on to the jack stands.
2. Remove the tires and wheels.
3. Remove the shock absorbers from the upper and lower mounts using a 18mm wrench. Retain hardware for reuse.
4. Place a floor jack under the differential housing to support the axle and remove the stock u-bolts using a 21mm socket. **See Photo 1.** Lower the differential enough to install the 1" block in the factory location.
5. Install the supplied block on the bottom of the factory block on the axle pad.
6. Install the supplied u-bolts and tighten using a 22mm wrench.
7. Assemble the shock bushings in the rear shock absorbers Part # 8116 Hydro or 9116 Nitro and install in the stock location using the factory hardware and tighten using a 18mm wrench.
8. Install the tires and wheels and jack up the rear of the vehicle.
9. Remove the jack stands and lower the vehicle to the ground.

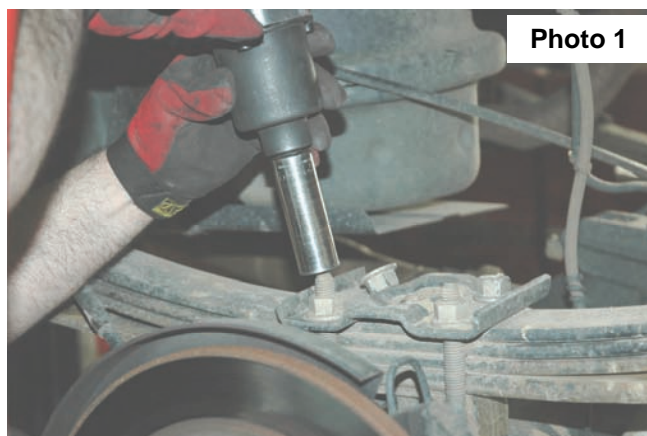


Photo 1

By purchasing any item sold by Rough Country, LLC, the buyer expressly warrants that he/she is in compliance with all applicable Federal, State, and Local laws and regulations regarding the purchase, ownership, and use of the item. It shall be the buyers responsibility to comply with all Federal, State and Local laws governing the sales of any items listed, illustrated or sold. The buyer expressly agrees to indemnify and hold harmless Rough Country, LLC for all claims resulting directly or indirectly from the purchase, ownership, or use of the items.

POST INSTALLATION INSTRUCTIONS

1. Lug nuts should be check after 50 miles and all nuts and bolts should be checked and tightened after 500 miles. All parts should be checked every 3000 miles for the life of the vehicle.
2. Recheck brake hoses and lines for proper clearances.
3. Perform steering sweep to check for appropriate tire clearance. Note- Some oversized tires may require trimming of the bumper and valance
4. If new tires are installed that are more than 10% taller than original tires, the speedometer must be recalibrated for the anti-lock brake system (if applicable) to function properly. Contact an authorized Ford dealer for details on recalibration.
5. Adjust headlights back to proper settings.
6. Have a qualified alignment center realign front end to factory specs.
7. Install "Warning to Driver" decal on sun visor.

Thank you for choosing Rough Country for your suspension needs.

