

# SK<sup>®</sup> U660E

## Corrects/Prevents/Reduces

Shuttle shift, flare on 2-3 shift, slips with throttle in 3rd and/or 4th, TCC slip codes.

For Professional Use Only!



### Fits:

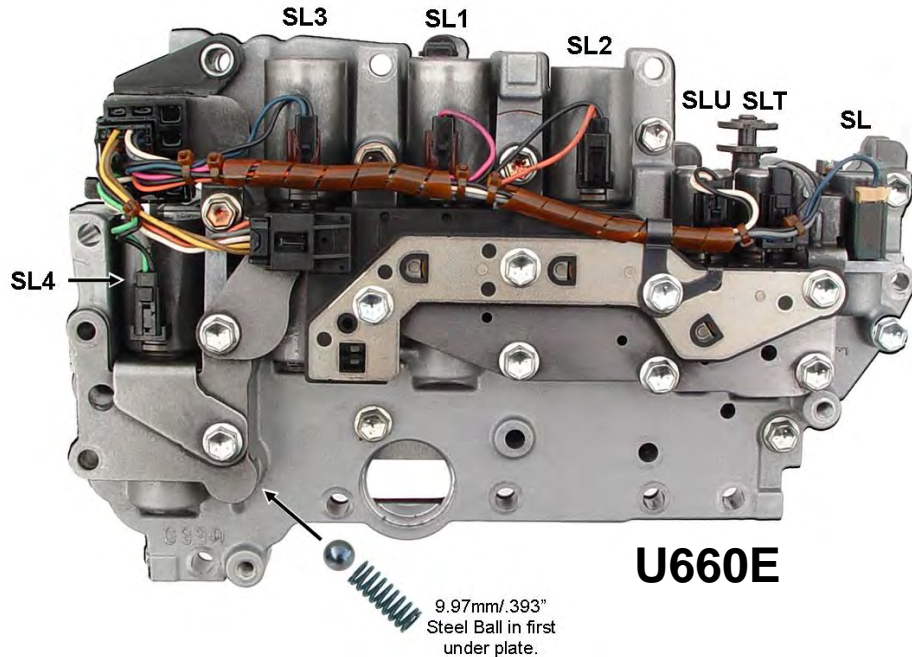
#### Toyota: U660 6 speed:

Avalon 08-10 3.5L, Camry 07-12 3.5L, Highlander 09-12 3.5L,  
RAV4 09-12 2.0, 2.2, & 3.5L, Sienna 11-12 3.5L, Venza 09-11 3.5L

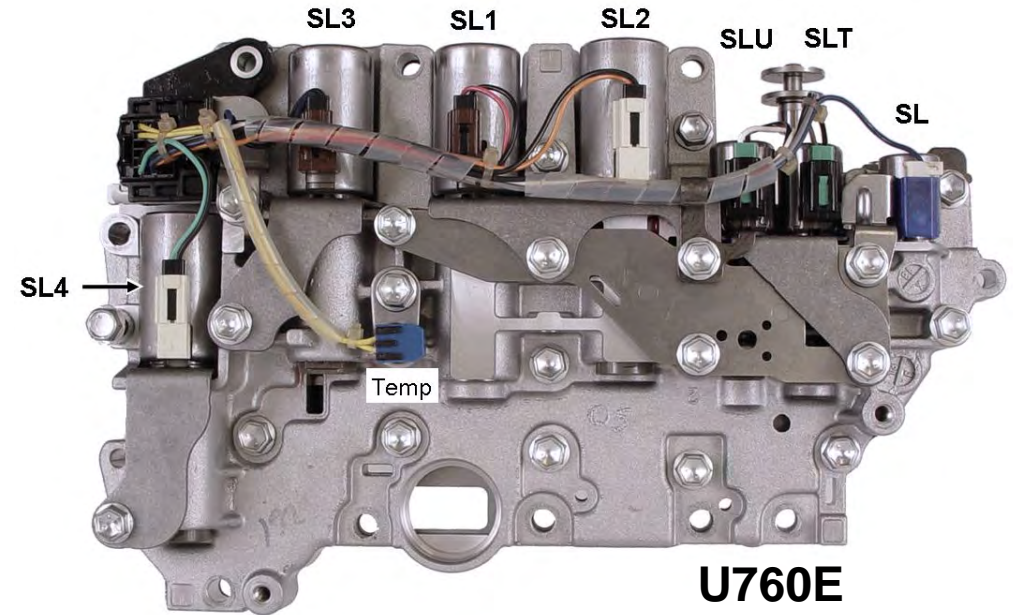
#### Lexus: U660 6 speed:

ES 350 07-12 3.5L  
RX 350 10-12 3.5L

**This Product Does Not Fit U760E Models!  
Order SK<sup>®</sup>U760E**



**U660E**



**U760E**

### Tech Note:

Always mark the current locations of check balls, retainers etc. to insure they are returned to their original locations even if they differ from what is shown. This is a typical layout of these valve body's. Use care in disassembling.

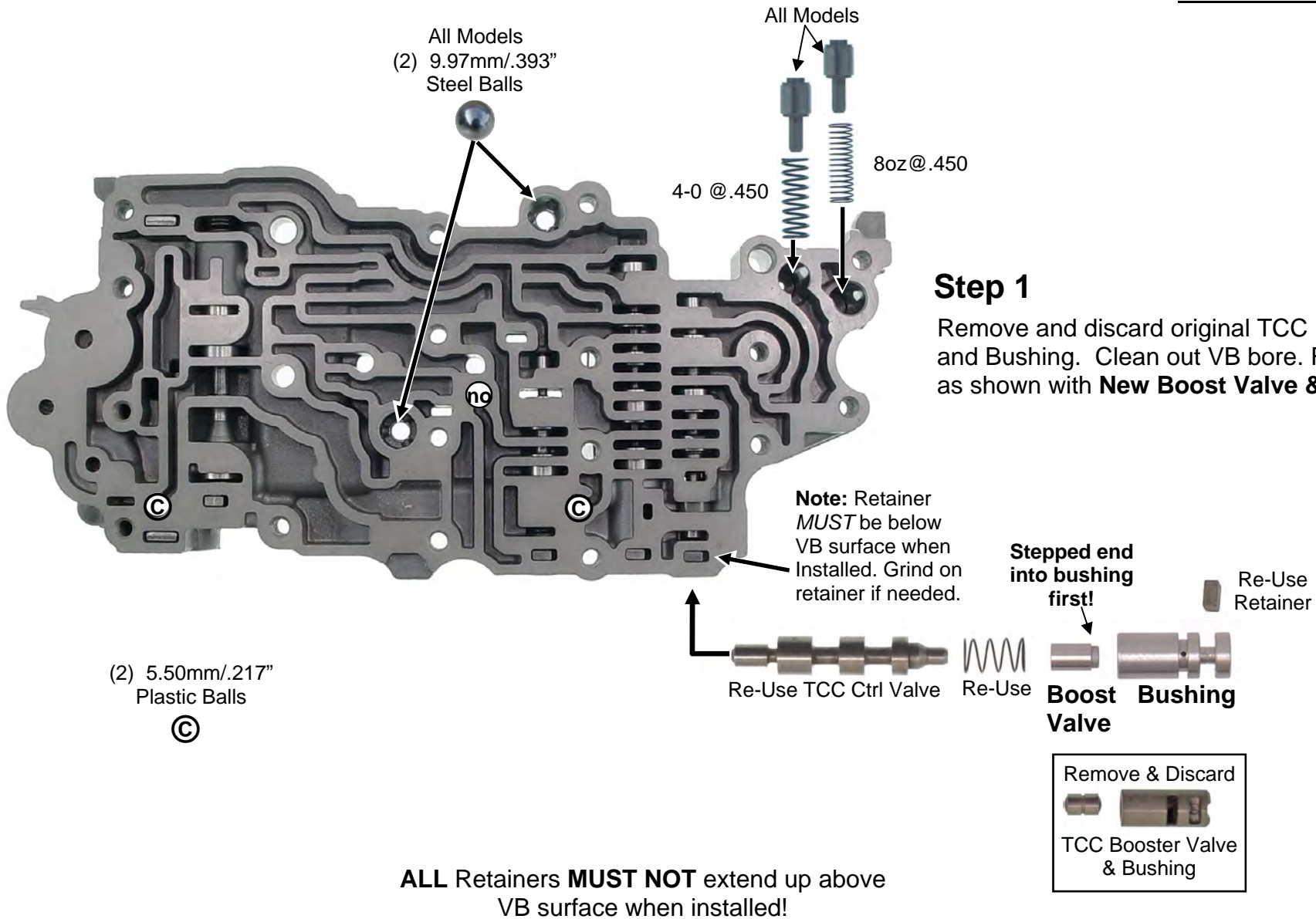
**Planetary failure always REQUIRES a complete strip and cleaning of the valve-body!**



**Mr. Shift**

# Accumulator Body Repairs

Pay Attention to Small Part Locations!



# Mid-Body Repairs

## Step 1

Remove & discard original B2 Regulator Outer Valve & Spring.

Install **NEW B2 Reg** outer Valve & **White** Spring. Re-use original End Plug & Retainer.

(3) 9.97mm/.393" Steel Balls



Re-Use Plug & Retainer

White

B2 Reg Outer

Re-Use Inner Valve

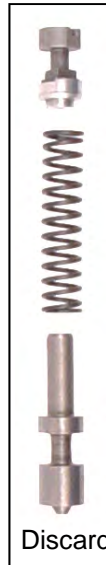
Re-Use Retainer

Sleeve

Orange

Sol Reg Valve

Bushing



## Step 2

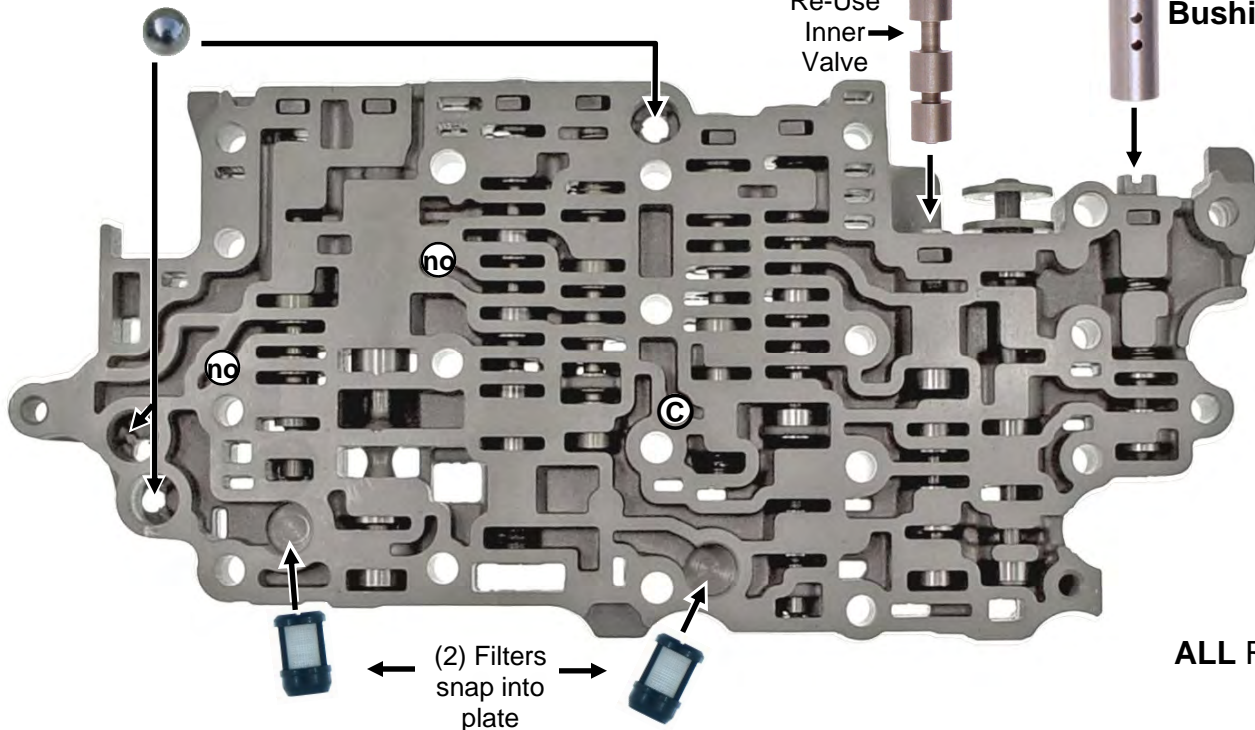
Remove & discard original Sol Regulator Valve, Spring & Stepped End Plug.

Install **NEW** Bushing, Valve, **Orange** Spring & Outer Sleeve. Re-use original Retainer.

(1) 5.50mm/.217" Plastic Ball

Ⓒ

**ALL** Retainers **MUST NOT** extend up above VB surface when installed!

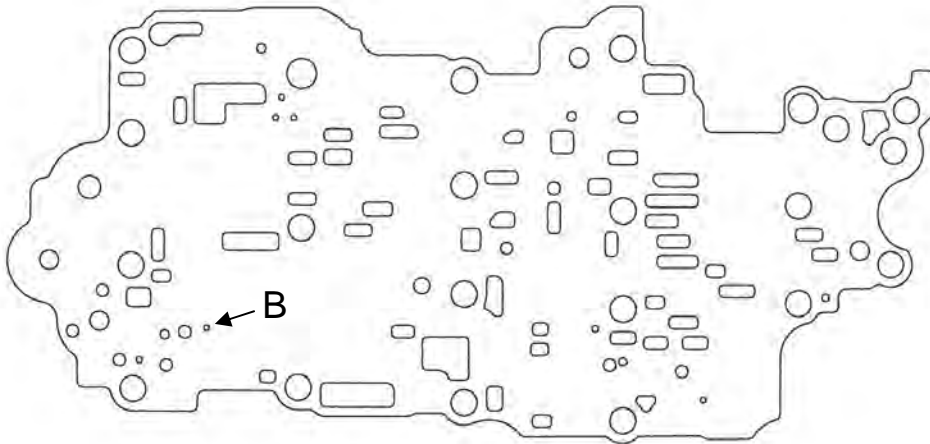


## Plate Updates

**Help This Trans Stay Cool!  
Do these steps!**

### Step 2

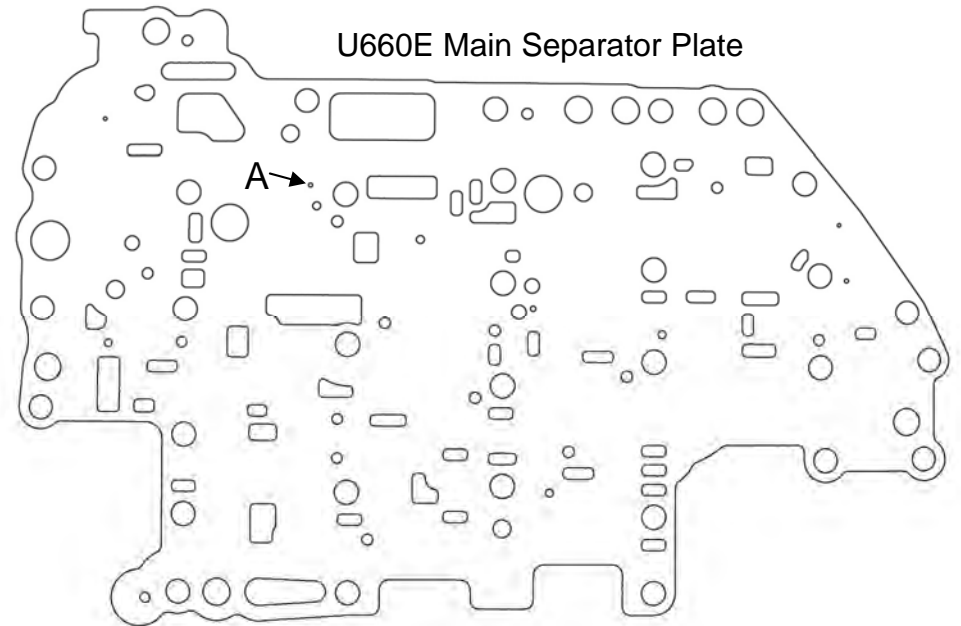
Enlarge Lower Body bottom separator plate hole "B" with .055 drill provided.



U660E Accumulator Body Separator Plate

### Step 1

Enlarge main separator plate hole "A" with .055 drill provided.



U660E Main Separator Plate

This page ends the U660E repair work.  
Always reassemble any loose small parts  
the way you found them.