

**2018+ SUBARU IMPREZA XV CROSSTREK MUD FLAP INSTALLATION INSTRUCTIONS (LIFTED/AT)**

View instructions and photos online [www.rallyarmor.com](http://www.rallyarmor.com)

**CARE AFTER INSTALLATION** Once installed, the vehicle owner is responsible for the condition of the mud flaps and all costs associated with replacing damaged or lost parts. Warranty covers manufacturer defect on new, never installed parts.

⚠ Watch for blind spots when parking ⚠ Avoid contact with curbs, bumps and objects that can compress the flaps with excessive force. Be sure to check wheel clearances, especially on vehicles equipped with aftermarket wheels and suspensions.

QUESTION ON INSTALLATION? CONTACT US ONLINE [www.rallyarmor.com/support](http://www.rallyarmor.com/support)

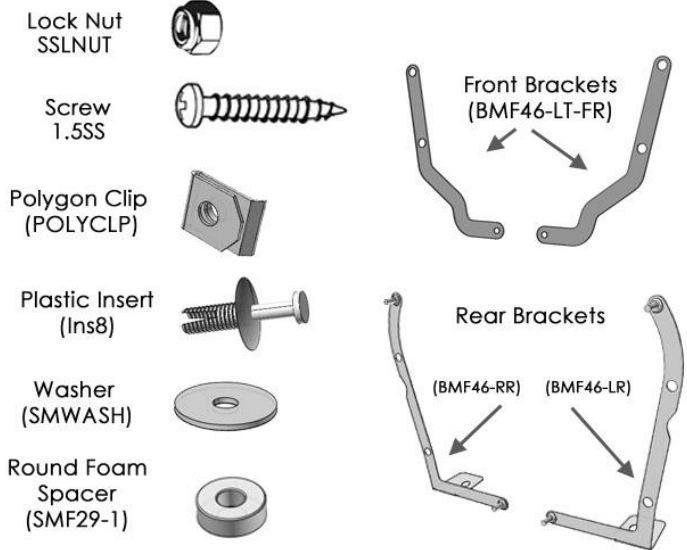
NEED TO PURCHASE REPLACEMENT PARTS? SEND RECEIPT OR PHOTO OF RALLY ARMOR LOGO ON FLAPS TO US [www.rallyarmor.com/support](http://www.rallyarmor.com/support)

**IMPORTANT NOTES**



**INSTALLATION KIT CONTENTS**

QUANTITY	PART	ITEM ID
2	Front Bracket	BMF46-LT-FR
1	Left Rear Bracket	BMF46-LR
1	Right Rear Bracket	BMF46-RR
16	Washer	SMWASH
4	Lock Nut	SSLNUT
10	Polygon Clip	POLCLP
10	Stainless Steel Screw	1.5SS
2	Round Foam Spacer	SMF29-1
2	Plastic Insert	INS8



**Recommended Tools** Low-profile, ratcheting offset or stubby Phillips screwdriver, small flathead screwdriver, panel removal tool.

**Important Tips** Installation should be done on an even surface. The hardware self-threads so avoid overtightening.

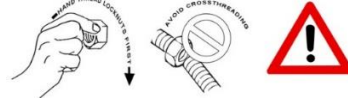
**RALLY ARMOR - A BIT ABOUT OUR STANDARD IN MUD FLAPS**

Rally Armor mud flaps are fabricated from a high grade polyurethane plastic that is rigorously reviewed for quality and consistency. As with all manufacturing processes, controlled conditions and multiple QC checkpoints minimize major irregularities, however certain very minor surface layer marks appear periodically. These are visual variations that do not affect construction nor do they impede the performance of the flaps. Most matte away as the material ages naturally with continued exposure to the outdoors. Each flap is unique in appearance yet all are equally structurally sound.

## 2018+ SUBARU IMPREZA XV CROSSTREK MUD FLAP INSTALLATION INSTRUCTIONS (LIFTED/AT)

CAREFULLY HAND THREAD LOCKNUTS TO BOLT FIRST TO AVOID CROSSTHREADING

A MISALIGNED NUT **CAN DAMAGE A BOLT** REGARDLESS OF PRESSURE APPLIED TIGHTEN AFTERWARDS ONLY UNTIL SEATED. REPLACEMENTS FOR MIS-INSTALLED, DAMAGED OR LOST HARDWARE DURING INSTALLATION ARE THE SOLE RESPONSIBILITY OF THE INSTALLER



### FRONT FLAP BRACKET & HARDWARE for 1 front flap → 1 x BMF46-LT-FR; 1 x SMF29-1; 3 x 1.5SS; 3 x POLCLP; 1 x INS8; 4 x SMWASH

Uninstall OEM splash guards if present. To access the inner wheel well, turn the steering wheel towards the side you are working on.

**FIGURE A** Remove and retain the factory retainer under the side skirt for re-use.

**FIGURE B** Pull liner away to access the inner fender well then remove the 3 factory fender liner fasteners as shown.

**FIGURE C** Angle 3 Polygon Clips **POLCLP** over each mounting point ensuring Clips don't shift then re-install liner then lower liner fastener.



**FIGURE D** Peel adhesive backing then stick a Round Foam Spacer **SMF29-1** onto the Bracket as shown. To increase tire clearance, subtly and slightly bend the lower section of the Bracket back.

**FIGURE E** Position the Bracket against logo-side of the mud flap. Ensure the Round Foam Spacer is snugly positioned against the liner.

**FIGURE F** Logo-side flap facing the rear of the vehicle, line it up to the corresponding mounting points on the fender liner and Bracket. Place a Washer **SMWASH** through Stainless Steel Screw **1.5SS** through mounts 1, 2 and 3. For mount 4, use a Washer and Insert **INS8**.

Align the outer edge of the flap by making slight angle adjustments then walking away from the vehicle to ensure the flap is even with the ground.

Tighten mounting screws until just seated against the mud flap.



**2018+ SUBARU IMPREZA XV CROSSTREK MUD FLAP INSTALLATION INSTRUCTIONS (LIFTED/AT)**

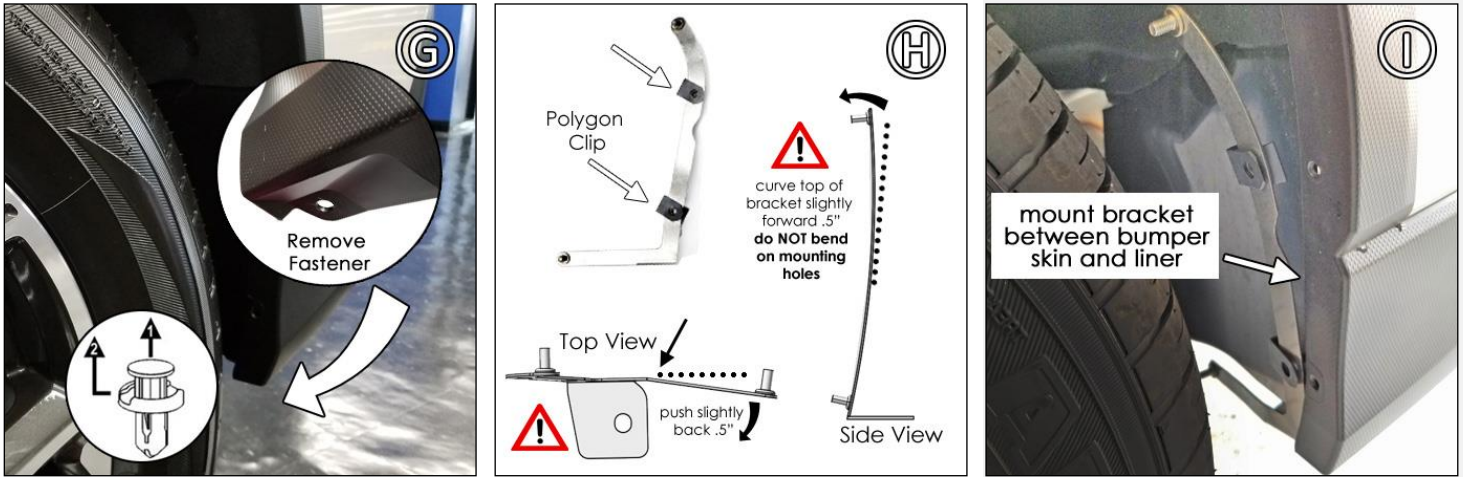
**REAR FLAP** LEFT REAR BRACKET & HARDWARE → 1 x BMF46-LR; 1 x SMF29-1; 2 x 1.5SS; 2 x SSLNUT; 2 x POLCLP; 1 x INS8; 4 x SMWASH

RIGHT REAR BRACKET & HARDWARE → 1 x BMF46-RR; 1 x SMF29-1; 2 x 1.5SS; 2 x SSLNUT; 2 x POLCLP; 1 x INS8; 4 x SMWASH

**FIGURE G** Remove and retain underbody rear bumper factory retainer for re-use by unlocking the interior pin first then the entire assembly.

**FIGURE H (Top View)** To increase tire clearance, bend the lower section of the Rear Bracket **BMF46-LR or BMF46-RR** no more than 1/2" to the rear as you want to avoid the lower section of the bent Rear Bracket from touching the inner liner. *(Side View)* Optional Slightly curve the upper portion of the Rear Bracket, using care not to bend the section where the mounting holes are located. Place Polygon Clips over both Rear Bracket mounting points.

**FIGURE I** Seat the Rear Bracket lower section between the bumper skin and its interior.



**FIGURE J** Install factory push fastener exterior housing through the bumper and Rear Bracket then use the interior pin to lock in. To align, lower Rear Bracket can be adjusted by hand.

**FIGURE K** Position logo-side flap to the rear of the vehicle and against the corresponding bumper and Rear Bracket mounting points. Pass a Stainless Steel Screw **1.5SS** through a Washer **SMWASH** then screw into Polygon Clips **POLCLP** previously positioned on the Rear Bracket. Loosely hand thread Lock Nut **SSLNUT** and Washer on upper & lowermost mounting points.

**FIGURE L** Align the outer edge of the flap by making slight angle adjustments then walking away from the vehicle to ensure the flap is even with the ground. Tighten mounting screws until just seated against the mud flap.



**2018+ SUBARU IMPREZA XV CROSSTREK MUD FLAP INSTALLATION INSTRUCTIONS (LIFTED/AT)**

