

2022+ SUBARU WRX Installation Instructions

View instructions and photos online

CARE AFTER INSTALLATION Once installed, vehicle owner is responsible for condition of mud flaps and all costs associated with replacing damaged or lost parts. Warranty covers manufacturer defect on new, never installed parts.

⚠ Watch for blind spots when parking ⚠ Avoid contact with curbs and objects that compress flaps with excessive force. Check wheel clearances, especially on vehicles equipped with aftermarket wheels and suspensions.

QUESTION ON INSTALLATION? CONTACT www.rallyarmor.com/support

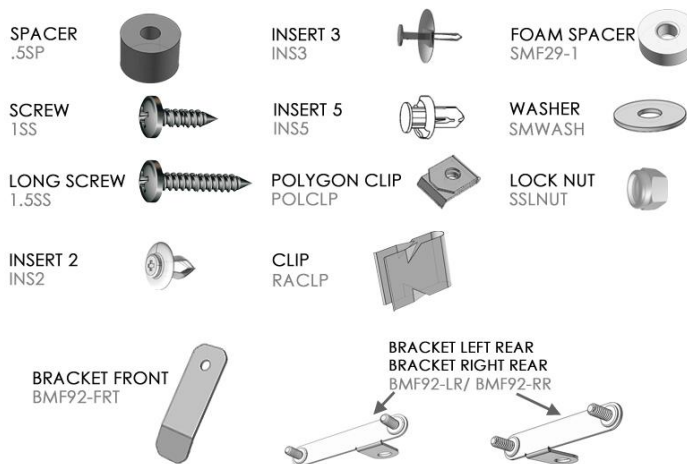
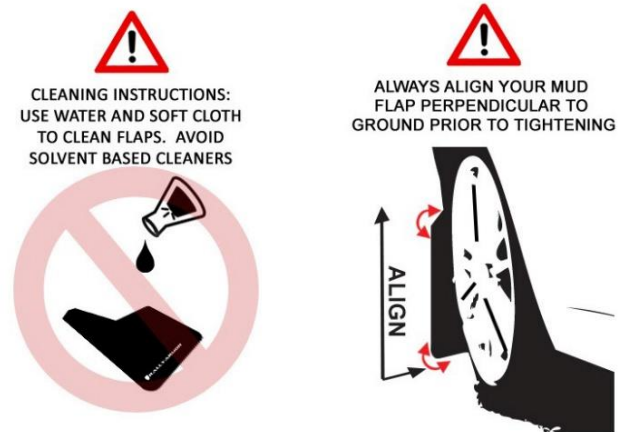
NEED TO PURCHASE REPLACEMENT PARTS? SEND RECEIPT OR PHOTO OF MUD FLAPS TO www.rallyarmor.com/support

IMPORTANT NOTES

INSTALLATION KIT CONTENTS



| QUANTITY | PART | ITEM ID |
|----------|--------------------|-----------|
| 2 | SPACER | .5SP |
| 4 | SCREW | 1SS |
| 2 | LONG SCREW | 1.5SS |
| 2 | INSERT 2 | INS2 |
| 2 | INSERT 3 | INS3 |
| 2 | INSERT 5 | INS5 |
| 4 | POLYGON CLIP | POLCLP |
| 2 | CLIP | RACLIP |
| 2 | FOAM SPACER | SMF29-1 |
| 8 | WASHER | SMWASH |
| 4 | LOCK NUT | SSLNUT |
| 2 | BRACKET FRONT | BMF92-FRT |
| 1 | BRACKET LEFT REAR | BMF92-LR |
| 1 | BRACKET RIGHT REAR | BMF92-RR |



Recommended Tools Low-profile offset, ratcheting, flat & phillips head screwdrivers, 7/16" wrench, pick.

Important Tips Installation should be done on an even surface. **Do not use power tools.** Tighten with hand tools only. Avoid overtightening.

RALLY ARMOR - A BIT ABOUT OUR STANDARD IN MUD FLAPS

Rally Armor mud flaps are fabricated from a high grade polyurethane plastic that is rigorously reviewed for quality and consistency. As with all manufacturing processes, controlled conditions and multiple QC checkpoints minimize major irregularities, however certain very minor surface layer marks appear periodically. These are visual variations that do not affect construction nor do they impede the performance of the flaps. Most matte away as the material ages naturally with continued exposure to the outdoors. Each flap is unique in appearance yet structurally sound.

2022+ SUBARU WRX Installation Instructions

FRONT MUD FLAP

Bracket & Hardware 1 x Front Flap → 1 x BMF92-FRT; 1 x .5SP; 2 x 1SS; 1 x 1.5SS; 1 x INS2; 2 x POLCLP; 1 x SMF29-1; 2 x SMWASH

Turn the steering wheel towards the side you are working on to gain access to the inner wheel well area.

FIGURE A Remove 4 factory fasteners. Pull liner away from fender.

FIGURE B Install POLCLP over mounts 2 & 3, behind side skirt on fender mount. Re-install liner.

FIGURE C Remove and discard inner screw from INS2, then install into mount 4.

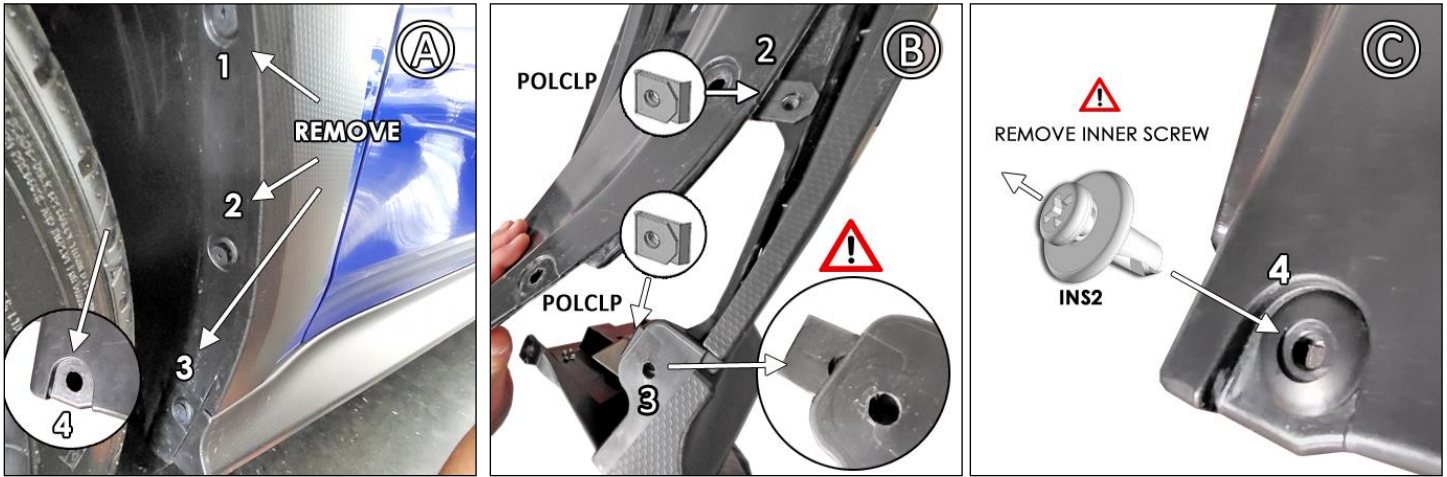
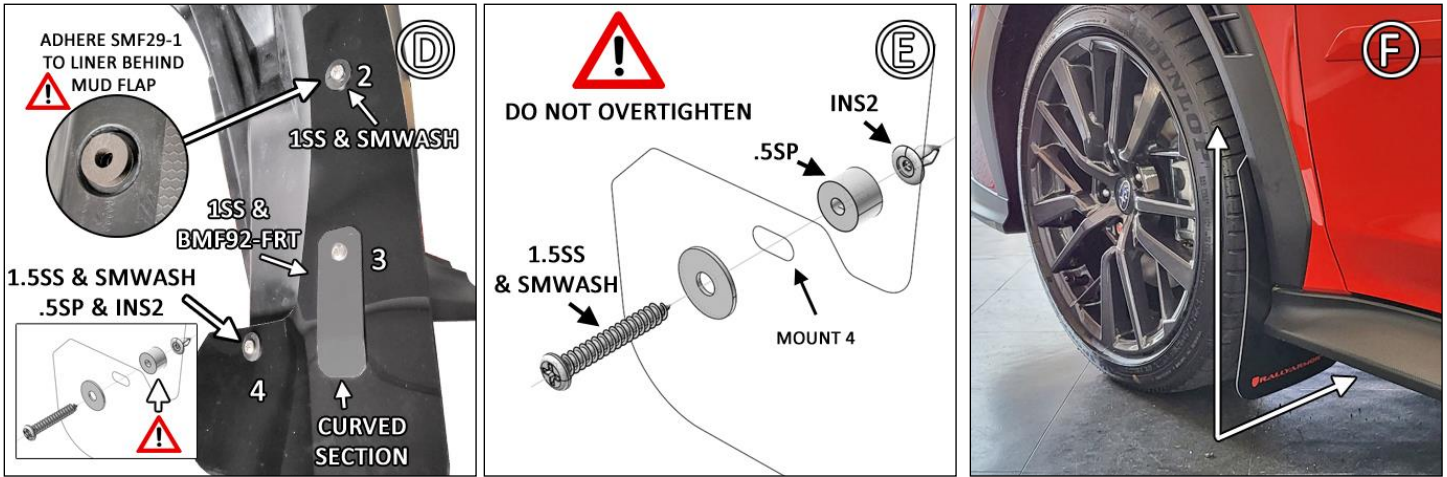


FIGURE D/E Adhere SMF29-1 **directly onto fender liner** of mount 2. Position BMF92-FRT bracket against flap mount 3. Curved section of bracket points to the ground. Install 1SS into BMF92-FRT mount 3. Use 1SS and SMWASH into mount 2. Position .5SP spacer **behind** flap mount 4 over INS2. Install 1.5SS & SMWASH through flap, .5SP and into INS2. Do not fully tighten.

FIGURE F Ensure mud flap is parallel to even ground. Tighten so washers are just seated to the flap. **Do not overtighten.**



2022+ SUBARU WRX Installation Instructions

REAR MUD FLAP

Bracket & Hardware 1 x Rear Flap → 1 x BMF92-LR/RR; 1 x INS3; 1 x INS5; 1 x RACLIP; 2 x SMWASH; 2 x SSLNUT

FIGURE G Press down on inner pin of factory fastener 1 to remove entire assembly.

FIGURE H Located under valance of vehicle, remove fastener 2.

FIGURE I Bracket studs facing tire, install BMF92-LR/RR with INS5.



FIGURE J Place logo-side of flap facing vehicle rear and against liner mounting points. Install INS3 into mount 1. Secure mounts 3 and 4 with SMWASH and SSLNUT. Align top of flap with edge of fender flare. Do not tighten yet.

FIGURE K/L Position flap so it's parallel to even ground. To secure and align top section of flap, clip RACLIP over flap and fender flare, Hand-tighten inserts and lock nuts just enough for the washers to seat against flap.



IMF92



2022+ SUBARU WRX Installation Instructions

FRONT REAR MF92 MOUNTING DIAGRAM

