



8759 Lion Street  
 Rancho Cucamonga, CA 91730  
 (909) 476-7225 TECH SUPPORT  
 (909) 476-1491 FAX  
 www.volantperformance.com

### INSTALLATION INSTRUCTIONS PART NO. 19754

READ INSTRUCTIONS THOROUGHLY BEFORE DISASSEMBLING. DO NOT SKIP ANY STEPS. ANY QUESTIONS ON A VOLANT KIT MAY BE REFERRED TO OUR TECH SUPPORT LINE AT (909) 476-7225 OR VISIT OUR WEBSITE AT WWW.VOLANTPERFORMANCE.COM

#### TOOLS NEEDED FOR INSTALL:

1. FLATHEAD SCREWDRIVER
2. 10MM SOCKET AND RATCHET WRENCH
3. 10MM WRENCH
4. PHILLIP SCREWDRIVER

#### INSTALLATION:

1. Turn vehicle to the off position. Disconnect the negative battery cable.
2. Disconnect and remove the crank case breather hose on the passenger side from the filter box and valve cover fitting. Unclip the red tab then unplug the mass flow sensor.
3. Unscrew and remove the 6mm bolt located on the middle of the stock air intake duct. Pull the stock air intake duct away from the filter box on the throttle body and from the engine compartment.
4. Remove the bracket that held the stock air intake down. Loosen and remove both bolts on the bottom of the bracket and remove it from the engine compartment. Reinstall the two bolts back with out the bracket.
5. Remove the four 6 mm bolts located on the sides of the stock square filter box on the throttle body using a 10mm socket and ratchet or 10mm wrench. Pull the filter box up and off the throttle body and away from the engine compartment.
6. Remove the mass flow sensor from the stock air box with the T20 torx key.
7. Reinstall the sensor in the Volant air duct using the same screws and the new sensor gasket. Make sure that the arrow is pointing towards the throttle body.
8. Apply the trim sponge onto the large round opening on the Volant filter box with the 3" lip. Install the Volant filter box on the driver side where the stock unit pulled its air. Remove the center bolts on the mounting tray. This will allow to mount the Volant box to the vehicle
9. Attach the Volant air filter to the adapter inside the Volant filter box.
10. Slip the Volant 3 1/2" sleeve onto the end of the Volant duct closest

- to the mass flow sensor. Use the 56 clamps to secure the sleeve on the duct and place the other clamp on the other end of the sleeve but only tighten enough for it to stay on.
13. Slip the 4" hump hose to the other end of the Volant duct.
  14. Connect the Volant duct with the hump hose to the Volant filter box first and the other end to the throttle body. Open the two 64 clamps and wrap it around the 4" hump hose. Once aligned tighten all clamps on the throttle body and the hump hose connection to the filter box.
  15. Reconnect the mass flow sensor on the Volant duct to the engine harness sensor plug. Connect the 1/2 hose provided to the Volant duct and the other end to the engine crank case breather hose fitting.
  16. Cover the Volant filter box with the lid and stainless steel screws provided.
  17. Make sure everything is tightened and properly connected.
  18. Reconnect the negative battery cable.

**WARNING: OVER TIGHTENING HARDWARE MAY ALTAR THE INTEGRITY OF THE VOLANT AIR INTAKE SYSTEM.**

#### BEFORE ROAD TESTING

1. Start engine, leaving the transmission in park and securing the parking brake.
2. Make sure to look and listen for any unusual noises or air leaks. Repair problems if needed.
3. Once completed it will be necessary to check periodically for realignment and tightening of all connections.
4. Once all tests are completed, enjoy the performance of your new Volant Air Intake System.

#### CARE AND CLEANING

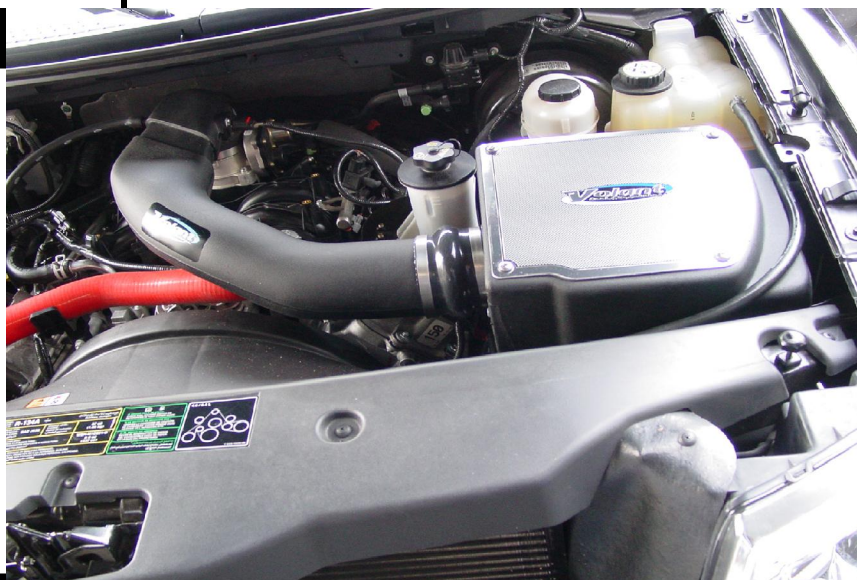
Check the cotton reusable filter periodically and remove any excessive dirt build-up by tapping the filter on the ground and brushing off the loosened dirt. Clean the filter by using Volant's Filter Recharger Kit. Volant's Filter Recharger Kit is designed to restore original air flow. Re-oil every 10,000 miles without cleaning to improve filtering in sand and dirt. Clean only when dirt is very excessive or 50,000 miles.

## APPLICATION GUIDE

### PART NO. 19754

MY	MAKE	MODEL	ENG
2004-2006	FORD	F-150	5.4L

RECOMMENDED SERVICE PARTS	PART NO.
VOLANT REPLACEMENT FILTER	5144
AIR FILTER CLEANER KIT	5100
VOLANT PREFILTER	51905

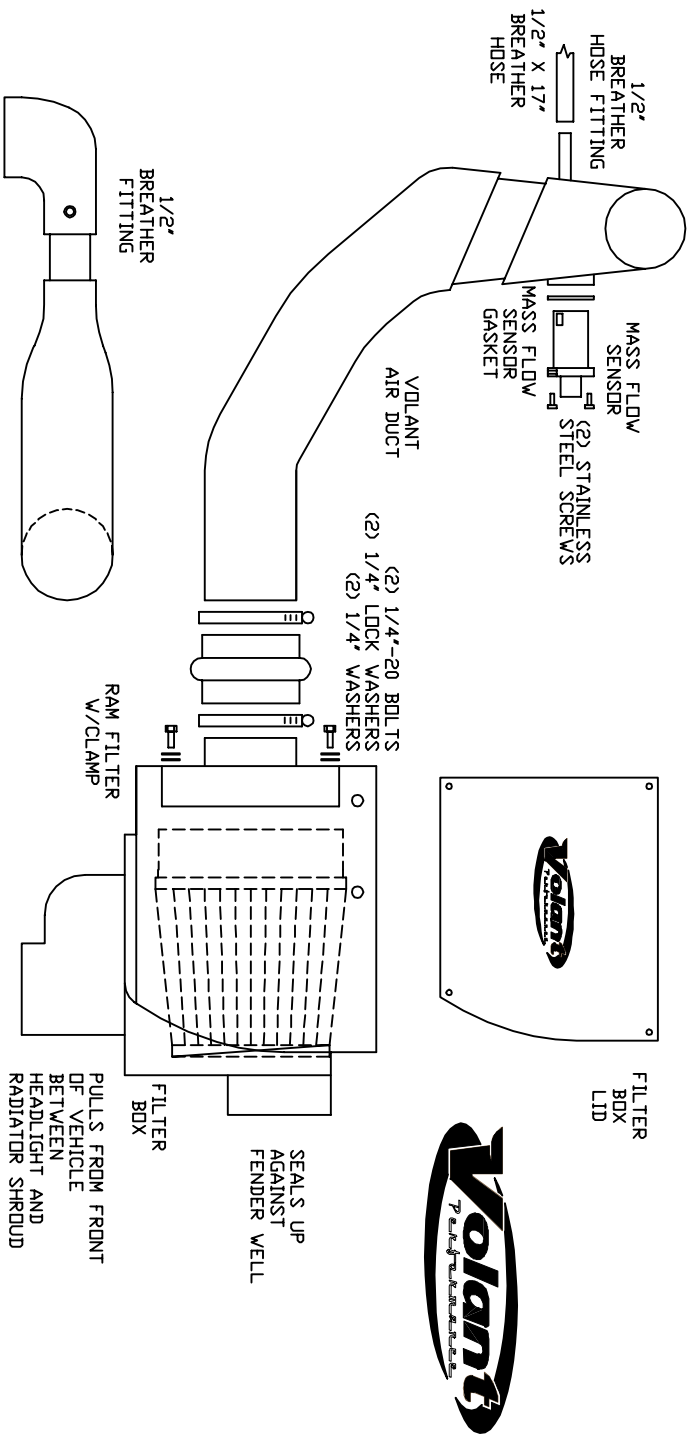


VOLANT AIR INTAKE SYSTEMS  
 PART NO.: 19754 VER. 2005  
 INSTALLATION INSTRUCTIONS  
 WWW.VOLANTPERFORMANCE.COM  
 TECH SUPPORT: (909) 476-7225

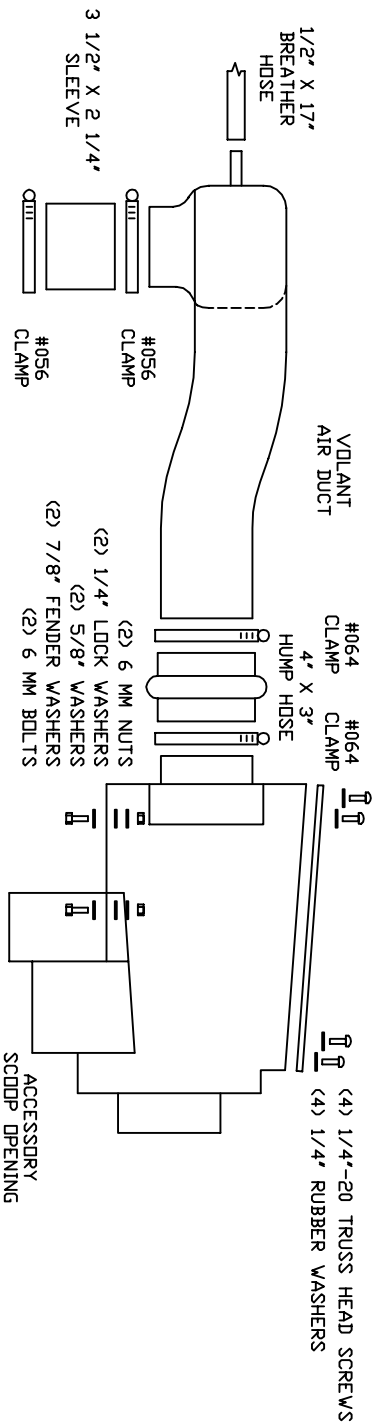
19754 PARTS LIST

1	FILTER BOX	1	3 1/2" X 2 1/4" SLEEVE	2	6 MM BOLTS
1	FILTER BOX LID	1	4" X 3" HUMP HOSE	2	5/8" WASHERS
1	FILTER BOX ADAPTER	4	1/4"-20 TRUSS HEAD SCREWS	2	7/8" FENDER WASHERS
1	VOLANT AIR DUCT	4	1/4" RUBBER WASHERS	2	6 MM NUTS
1	RAM FILTER W/CLAMP	2	1/4"-20 BOLTS	2	STAINLESS STEEL SCREWS
2	#056 CLAMPS	4	1/4" LOCK WASHERS	1	MASS FLOW SENSOR GASKET
2	#064 CLAMPS	2	1/4" WASHERS	1	1/2" X 17" BREATHER HOSE

TOP VIEW



LEFT SIDE VIEW



SIDE VIEW

