

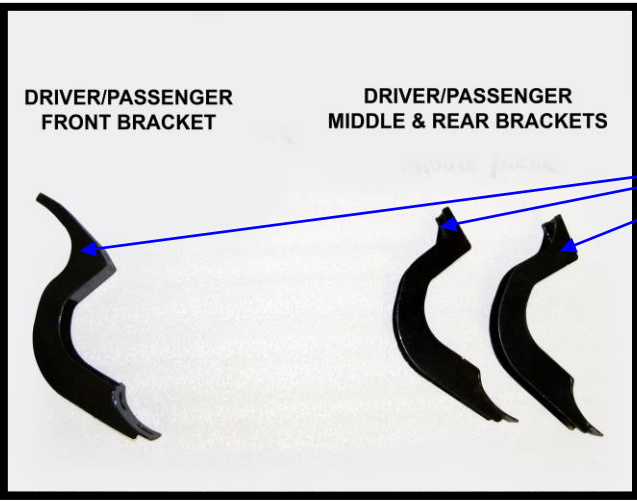
**INSTALLATION INSTRUCTIONS**  
**SIDEBAR #**  
**07-13 FJ CRUISER**

**PARTS LIST:**

- (2) SIDEBARS (DRIVER/PASSENGER)
- (2) FRONT BRACKETS (DRIVER/PASSENGER)
- (4) MIDDLE AND REAR BRACKETS (DRIVER/PASSENGER)
- (12) M10 X 35mm HEX HEAD BOLTS
- (12) M10 SPLIT LOCK WASHERS
- (12) M10 FLAT WAHSERS
- (12) M8 X 40mm HEX HEAD BOLTS
- (12) M8 SPLIT LOCK WASHERS
- (12) M8 FLATWASHERS

**PROCEDURE:**

- 1- REMOVE CONTENTS FROM BOX AND CHECK FOR DAMAGE AND VERIFY ALL PARTS ARE PRESENT. READ INSTRUCTIONS CAREFULLY. SEE REFERENCE PHOTO.
- 2- REMOVE (6) EXISTING BOLTS AND SET ASIDE. REMOVE EXISTING RUNNING BOARD. INSTALL (1) FRONT BRACKET AND (2) MIDDLE/REAR BRACKETS USING (6) M8 X 40mm HEX HEAD BOLTS (6) M8 SPLIT LOCK WASHERS (6) M8 FLAT WASHERS, LEAVE LOOSE. SEE FIG #1 NOTE: IF VEHICLE DOES NOT COME WITH EXISTING RUNNING BOARDS. USE EXISTING BOLTS LOCATE UNDERNEATH THE VEHICLE.
- 3- REPEAT PROCEDURE #2 ON OPPOSITE SIDE.
- 4- INSTALL SIDE BAR ON TO BRACKETS USING (6) M10 X 35mm HEX HEAD BOLTS (6) M10 SPLIT LOCK WASHERS (6) M10 FLAT WASHERS LEAVE LOOSE. SEE FIG #2
- 5- REPEAT PROCEDURE #4 ON OPPOSITE SIDE.
- 6- LEVEL AND ADJUST SIDE BAR AS DESIRED AND TIGHTEN. SEE FIG. #2



FOR REFERENCE

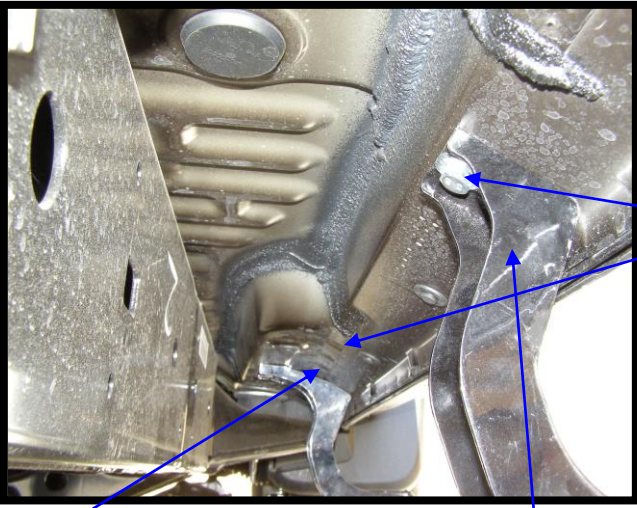


FIG. #1 PASSENGER SIDE SHOWN

M8 HARDWARE

FRONT BRACKET

MIDDLE & REAR BRACKET



FIG. #2 DRIVER SIDE SHOWN

M10 HARDWARE