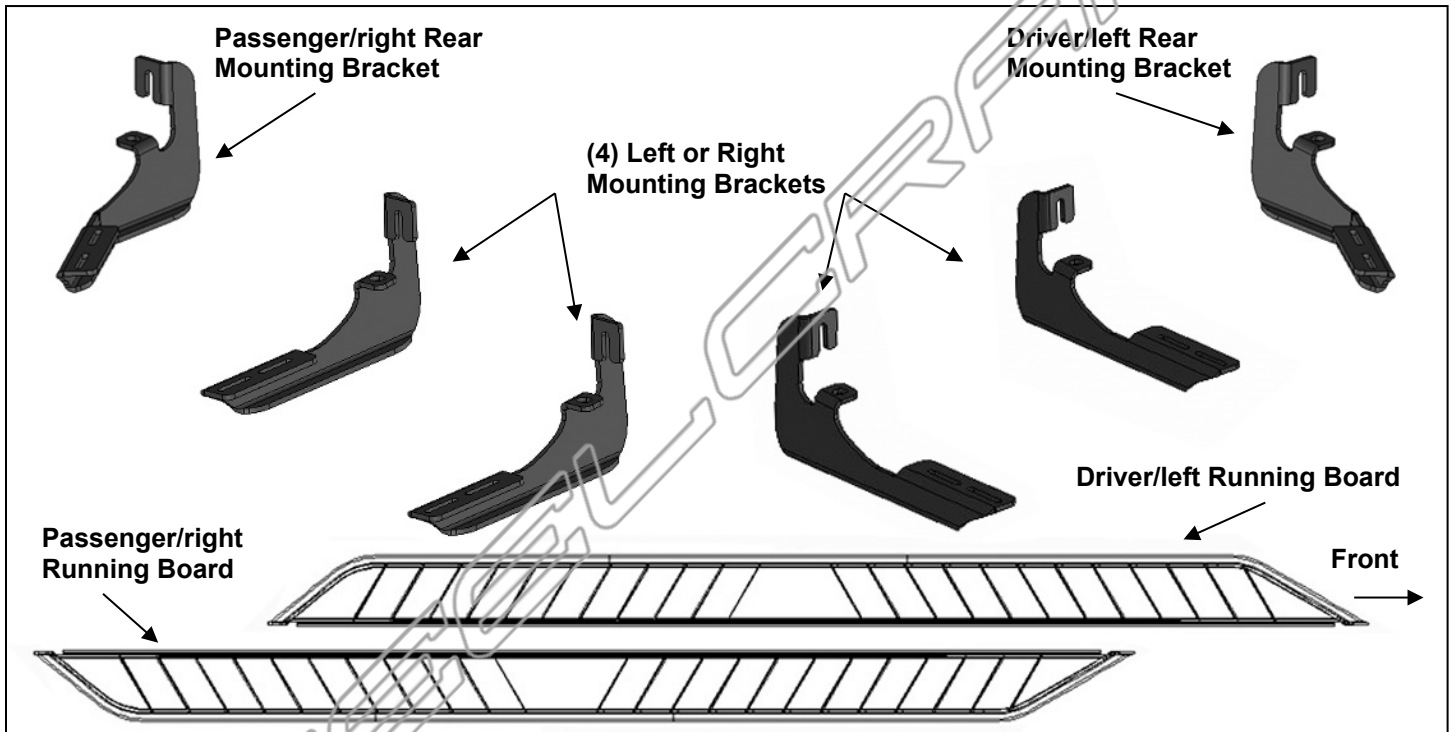


PARTS LIST:

| | | | |
|----|--|----|----------------------------------|
| 1 | Driver/left Running Board | 12 | 8-1.25mm x 30mm Hex Bolt |
| 1 | Passenger/right Running Board | 12 | 8mm x 24mm x 2mm Flat Washer |
| 4 | Front and Center Mounting Brackets (use for left or right) | 12 | 8mm Lock Washer |
| 1 | Driver/left Rear Mounting Bracket | 12 | 6mm T-Bolts |
| 1 | Passenger/right Rear Mounting Bracket | 12 | 6mm x 22mm OD x 2mm Flat Washers |
| 12 | 8-1.25mm Clip-On Nuts | 12 | 6mm Lock Washers |
| | | 12 | 6mm Hex Nuts |



PROCEDURE:

REMOVE CONTENTS FROM BOX. VERIFY ALL PARTS ARE PRESENT. READ INSTRUCTIONS CAREFULLY BEFORE STARTING INSTALLATION. ASSISTANCE IS RECOMMENDED.

1. Start the installation under the passenger side of the vehicle. Locate the 4 factory running board mounting locations along the bottom and inner side of the body, **(Figure 1)**. Mounting Brackets will bolt to the 1st, 2nd and 4th mounting locations. **NOTE:** It may help to hold a Bracket up in place to help determine the mounting holes to use along the bottom and inner side of the body.
2. Remove rubber plugs as necessary, **(Figure 2)**. Select (2) 8mm Clip Nuts. Slide each Clip Nut into the large hole and over the smaller hole next to it. Line up threaded nut on the Clip Nut with smaller hole in body panel, **(Figure 3)**.
3. Select (1) of the (4) included front or center Mounting Brackets. **NOTE:** The (4) front or center Brackets are universal and will fit left or right side. Bolt the Mounting Bracket to the (2) Clip Nuts with (2) 8mm Hex Bolts, (2) 8mm Lock Washers and (2) 8mm Flat Washers, **(Figure 4)**. Snug but do not fully tighten the hardware.
4. Repeat **Steps 1—3** to install the passenger side center Bracket, **(Figure 4)**.

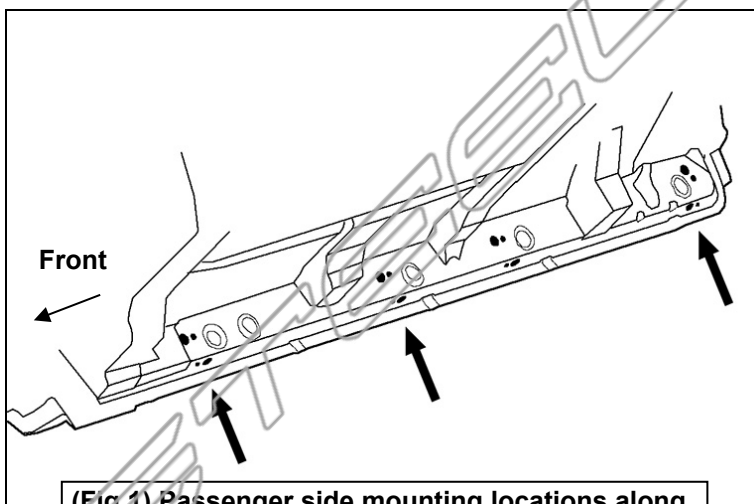
5. Select the passenger side rear Mounting Bracket. Repeat **Steps 1—4** to install the angled rear Bracket, (see **Page 1**).
6. Carefully unwrap the Running Boards. Select the passenger side Running Board. **NOTE:** End with sharper angle is the front of the Running Board, (see **Page 1**). Locate the two channels in the bottom of the Running Board. Slide (3) T-Bolts into each channel, (**Figure 5**).
7. Hold the Running Board up in approximate position and slide the T-Bolts down to line up with the Mounting Brackets. Tilt the Board up at a slight angle and push back against the vehicle until the T-Bolts fit into the slots on the Brackets.
8. Secure the Running Board to the Brackets with (6) 6mm Flat Washers, (6) 6mm Lock Washers and (6) 6mm Hex Nuts, (**Figure 6**). Do not tighten hardware at this time. **NOTE:** The Running Board is designed to fit close to the vehicle. It may be necessary to loosen the Bracket hardware and tilt the Brackets downward to insert the Running Board between the Brackets and the body.
9. Level and adjust the Running Board and tighten all hardware.
10. Repeat **Steps 1—9** for driver side Running Board installation.
11. Do periodic inspections to the installation to make sure that all hardware is secure and tight.

To protect your investment, wax this product after installing. Regular waxing is recommended to add a protective layer over the finish. Do not use any type of polish or wax that may contain abrasives that could damage the finish.

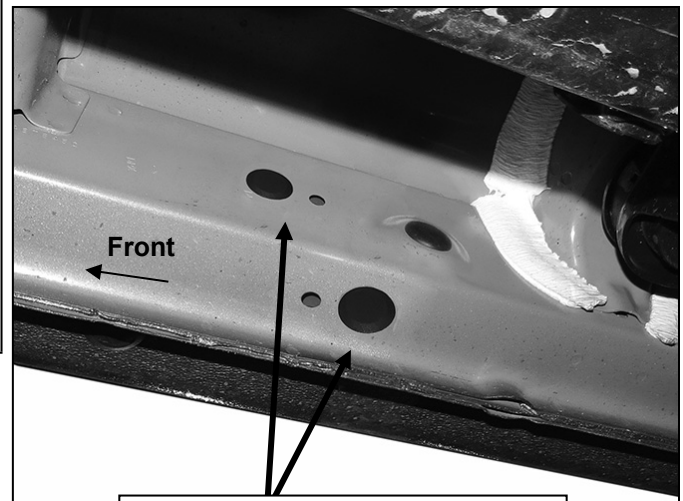
For stainless steel: Aluminum polish may be used to polish small scratches and scuffs on the finish. Mild soap may be used also to clean the Running Board.

For gloss black finishes: Mild soap may be used to clean the Running Board.

Passenger/right Side Installation Pictured



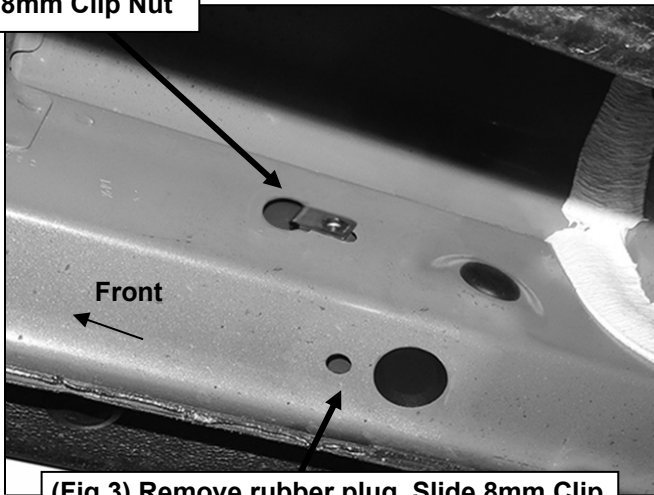
(Fig 1) Passenger side mounting locations along bottom and back of body panel illustrated



(Fig 2) Remove plugs from mounting locations as necessary

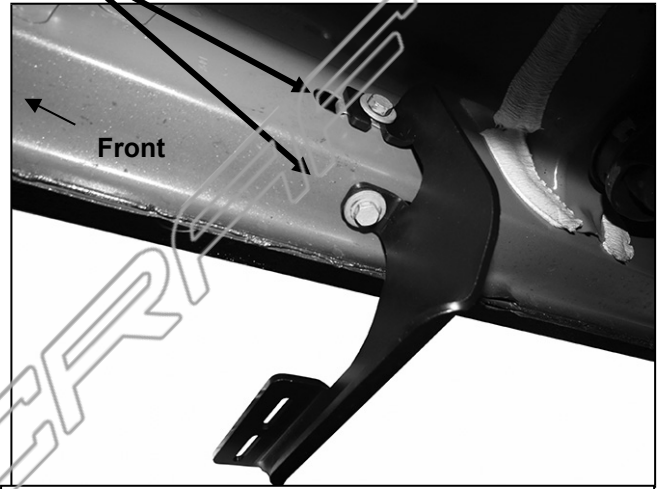
Passenger/right Side Installation Pictured

8mm Clip Nut

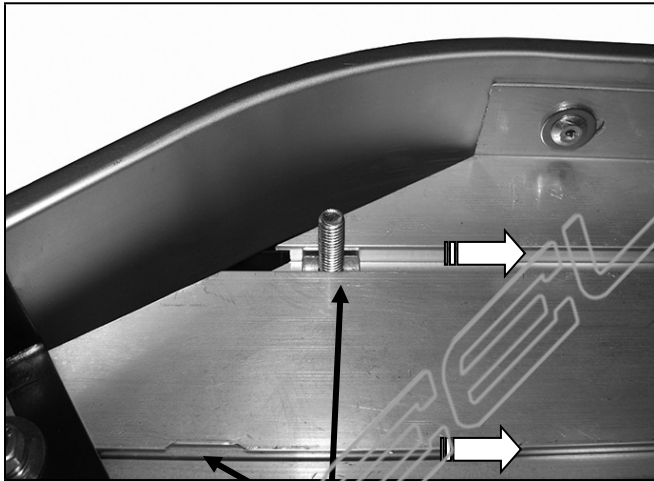


(Fig 3) Remove rubber plug. Slide 8mm Clip Nut into large hole and over small hole

(2) 8mm x 30mm Hex Bolts
(2) 8mm Lock Washers
(2) 8mm Flat Washers

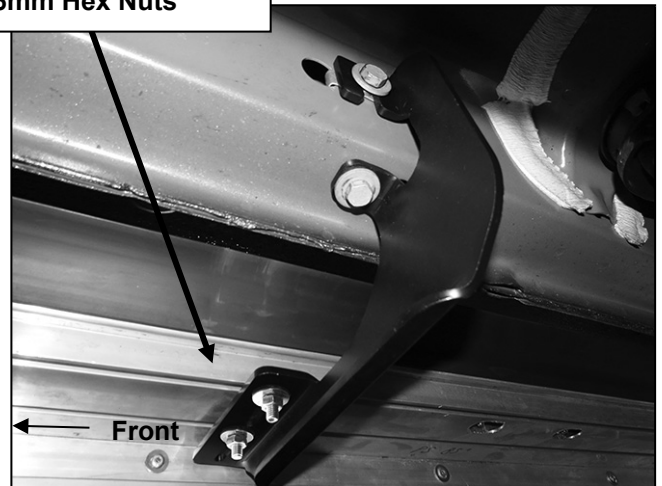


(Fig 4) Passenger side center Bracket installation

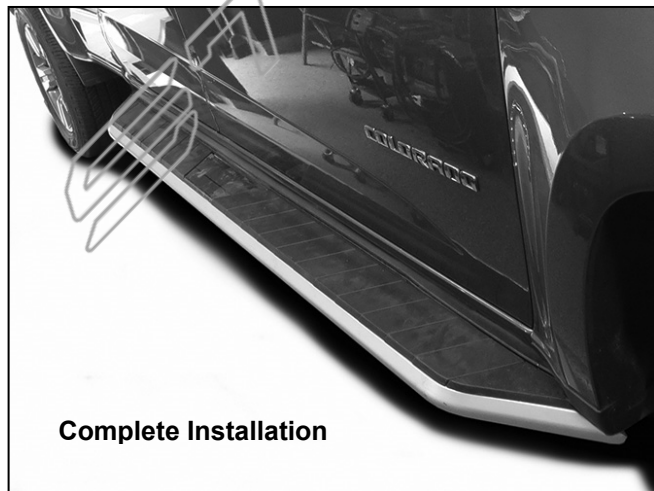


(Fig 5) Slide 6mm T-Bolts into channels

(2) 6mm T-Bolts
(2) 6mm Flat Washers
(2) 6mm Lock Washers
(2) 6mm Hex Nuts



(Fig 6) Passenger side installation pictured



Complete Installation