

A. Installation Diagram

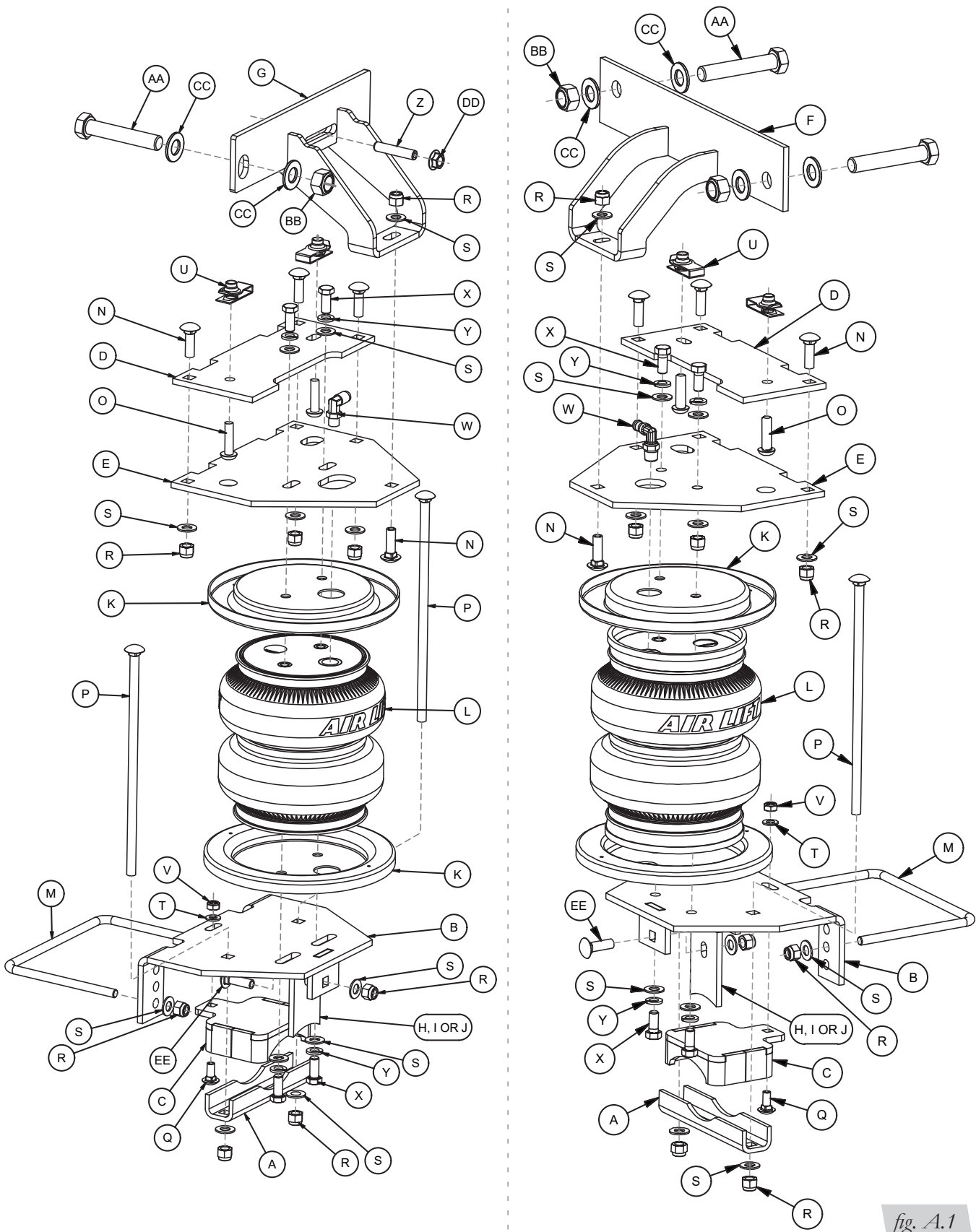


fig. A.1

B. Hardware and Tools Lists

HARDWARE LIST

Item	Part #	Description	Qty
A	01531	Clamp bar.....	2
B	03818	Lower bracket.....	2
C	03225	Lower bracket cup.....	2
D	07974	Upper chassis bracket.....	2
E	07925	Upper air spring bracket.....	2
F	07895	RH upper frame brace.....	1
G	07873	LH upper frame brace.....	1
H	03913	Lower leg adapter, 3 1/2" axle.....	2
I	03914	Lower leg adapter, 4" axle.....	2
J	03915	Lower leg adapter, 4 1/2" axle.....	2
K	11897	Roll plate.....	4
L	58115	Air spring.....	2
M	11770	U-bolt.....	2
N	17361	3/8"-16 x 1 1/4" Carriage bolt.....	10
O	17366	M10-1.5 x 35mm Button head cap screw.....	4
P	17387	3/8"-16 x 10" Carriage bolt.....	4
Q	17500	5/16"-18 x 3/4" Carriage bolt.....	2
R	18435	3/8"-16 Nylon lock nut.....	18
S	18444	3/8" Flat washer.....	27
T	18501	M8 Flat washer.....	4
U	18622	M10-1.5mm, Short universal nut.....	4
V	18613	5/16"-18 Nylon lock nut.....	2
W	21830	1/4" NPT x 1/4" PTC swivel 90-degree fitting.....	2
X	17203	3/8"-24 x 7/8" Hex bolt.....	8
Y	18427	3/8" Lock washer.....	8
Z	17525	M10 x 1.5 x 50mm Set screw.....	1
AA	17348	5/8"-11 x 4 1/2" Hex cap screw.....	3
BB	18548	5/8"-11 Nylon lock nut.....	3
CC	18449	5/8"-11 Flat washer.....	6
DD*	18651	M10 x 1.5 Serrated flange nut.....	1
EE	17134	3/8"-16 x 1 Carriage bolt.....	2
FF*	10466	Zip ties.....	6
GG*	21230	Valve cap.....	2
HH*	21234	Rubber washer.....	2
II*	18411	Small star washer.....	2
JJ*	21233	5/16" Hex nut.....	4
KK*	20086	Air line with 2 schrader valves.....	1

*Not shown in Figure A.1

TOOLS LIST

Description.....	Qty
Metric & standard open-end box wrenches.....	set
Ratchet with metric and standard sockets.....	set
Drill and 5/16" drill bit.....	1
Torque wrench.....	1
Hex key wrenches metric and standard.....	set
Hose cutter, razor blade or sharp knife.....	1
Hoist or floor jack.....	1
Safety stands.....	2
Safety glasses.....	1
Air compressor or compressed air source.....	1
Spray bottle with dish soap/water solution.....	1



Missing or damaged parts? Call Air Lift customer service at (800) 248-0892 for a replacement part.