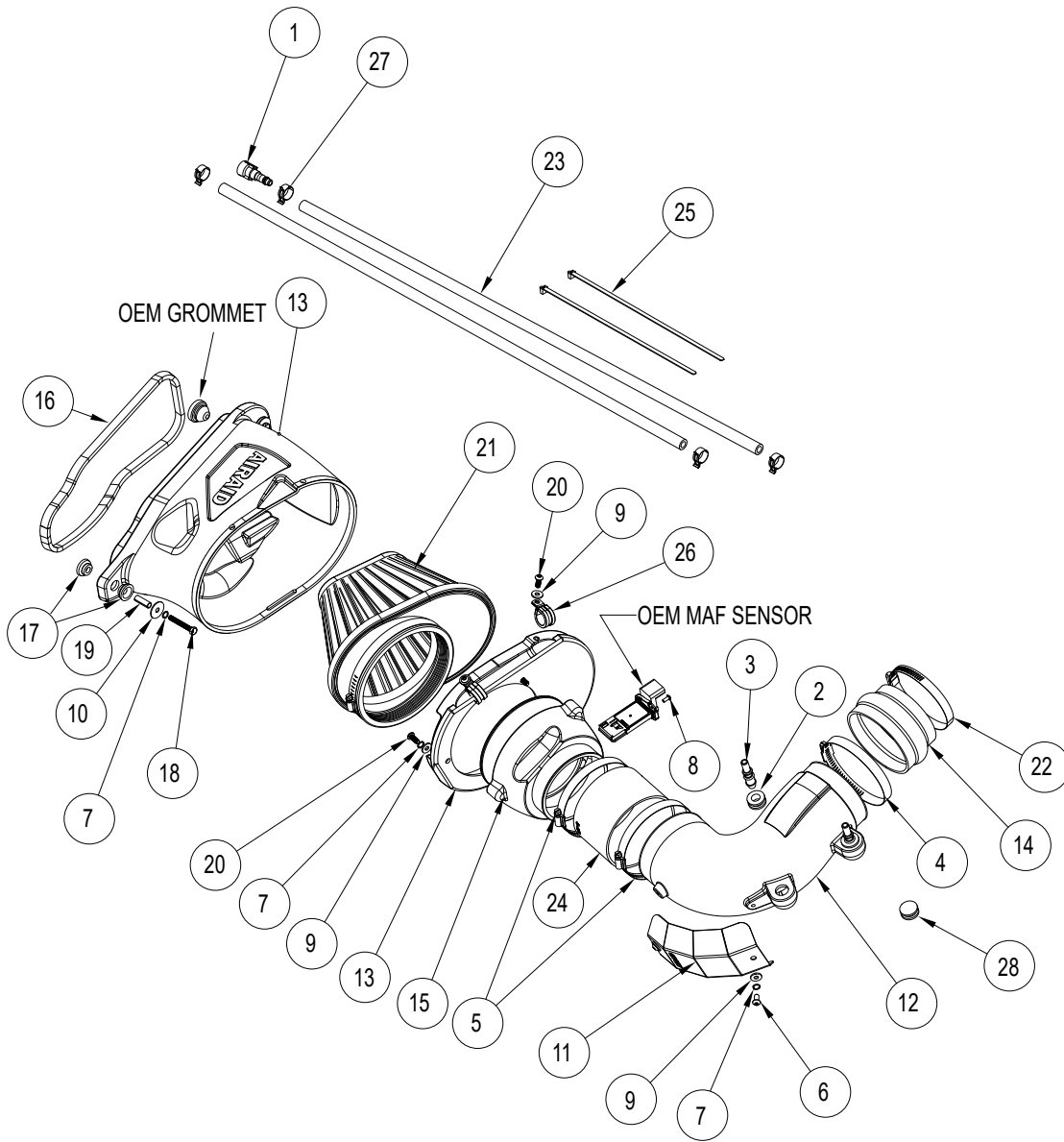


**NOT LEGAL FOR SALE OR USE ON ANY POLLUTION CONTROLLED MOTOR VEHICLE IN CALIFORNIA OR STATES ADOPTING CALIFORNIA EMISSION PROCEDURES.**



## Component Identification

|    |                 |  |   |
|----|-----------------|--|---|
| 1  | 082629          | FITTING; 3/8ID QUICK DISCONNECT TO 3/8   | 1 |
| 2  | KITGRMT03       | GROMMET, 0.500ID-0.750GD-0.190GW         | 2 |
| 3  | KITFITTING05    | COUPLER, HOSE ALUM .500 X .375           | 2 |
| 4  | KITHS64         | CLAMP, HOSE .563W 3.563MIN 4.500MAX      | 1 |
| 5  | KITHS72         | CLAMP, HOSE .563W 1.875MIN 5.000MAX      | 2 |
| 6  | KIT15DHC3050    | SCREW, BUTTON HEAD CAP 1/4-20 X .500L    | 2 |
| 7  | 08198           | WASHER, SPLIT LOCK, 1/4"                 | 9 |
| 8  | KIT15BHC3038    | SCREW, BUTTON HEAD CAP SS 8-32 X .375    | 2 |
| 9  | 08275           | WASHER, FLAT                             | 7 |
| 10 | 08160           | WASHER, FLAT                             | 2 |
| 11 | KIT274HS        | HEAT SHIELD, 250-274                     | 1 |
| 12 | KIT274T         | TUBE, INTAKE, 250-274                    | 1 |
| 13 | KIT274CAB-DAM   | AIRBOX, INTAKE, 250-274                  | 1 |
| 14 | KITHUMPHS48     | HUMPHOSE, REDUCING 4.250D-3.875D-2.500L  | 1 |
| 15 | KIT274MAFADA    | FILTER ADAPTER, 250-274                  | 1 |
| 16 | KIT298G         | .500 X .312 FOAM, 31" L                  | 2 |
| 17 | KITGRMT15-1     | POST GROMMET                             | 4 |
| 18 | KIT20CSCZ6450   | HEX BOLT, 6MM X 45MM                     | 2 |
| 19 | KITSPACER11     | SPACER, .26 ID X .34 OD X 1.00 L         | 2 |
| 20 | KIT142058BHCSSS | SCREW, BUTTON HEAD CAP 1/4-20 X .625L    | 5 |
| 21 | 724-484         | FILTER                                   | 1 |
| 22 | 08628           | HOSE CLAMP                               | 1 |
| 23 | 08636           | HOSE                                     | 2 |
| 24 | 5-450           | HOSE, SILICONE COUPLER, 4.5" DIA. X 3.0" | 1 |
| 25 | 21590           | CABLE TIES; 11" BLACK                    | 2 |
| 26 | 077014          | CLAMP, STEEL LOOP, SLEEVED. 3/4" I.D.    | 2 |
| 27 | 08553           | HOSE CLAMP; SPRING BAND 20MM X 12MM      | 4 |
| 28 | 21684-1         | PLUG; 1-3/16"OD, 11/16"ID X 7/16"HT      | 1 |