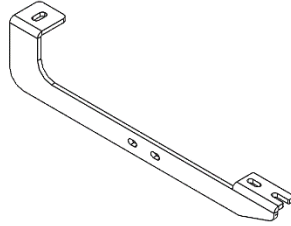


DZ 16215 Acadia/Blazer

B

Driver Front Main Bracket

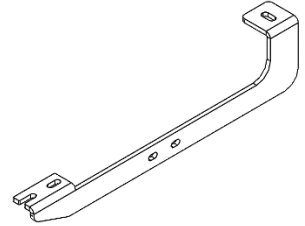


B 2491LP

X1

C

Passenger Front Main Bracket

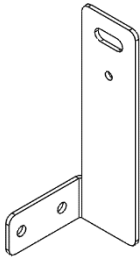


B 2491RP

X1

D

Driver Front Support Bracket

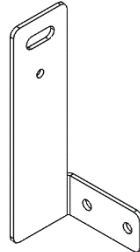


B 2490LP

X1

E

Passenger Front Support Bracket

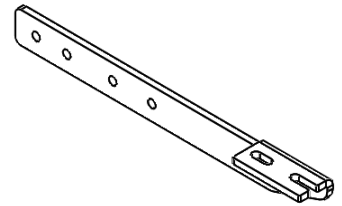


B 2490RP

X1

F

Driver Rear Main Bracket

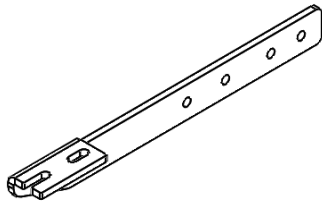


B 2492LP

X1

G

Passenger Rear Main Bracket

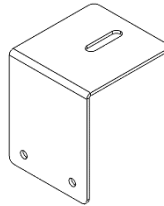


B 2492RP

X1

H

Rear Support Bracket

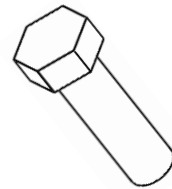


B 2493P

X2

I

3/8-16 x 1 1/4 Hex Bolt

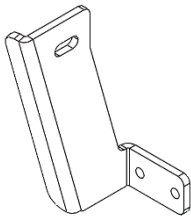


PN 114

X6

J

Driver Rear Bracket

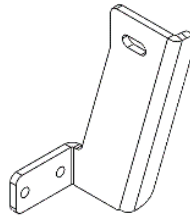


B 2494LP

X1

K

Passenger Rear Bracket

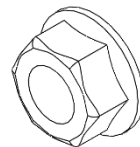


B 2494RP

X1

L

M8-1.25 Hex Nut

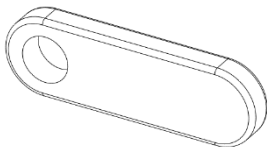


PN 526

X20

M

M10-1.5 Single Tap Spot Weld Nut

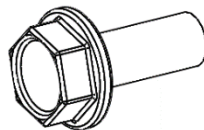


PN 742

X4

N

M8-20mm Hex Bolt

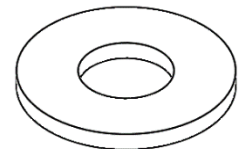


PN 527

X8

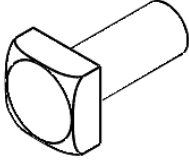
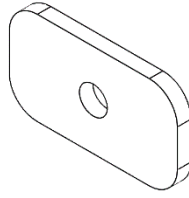
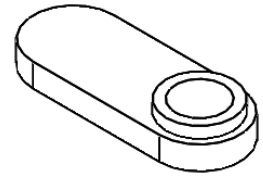
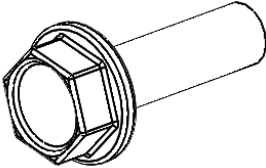
O

3/8 Flat Washer



PN 113

X6

P**M8-1.25 x 20mm Square Head Bolt****PN 524****X8****Q****3/8 – 16 Large Thread Plate****PN 407****X2****R****M8 Small Thread Plate****PN 714****X2****S****M8-1.25 x 25mm Square Head Bolt****PN 525****X6**