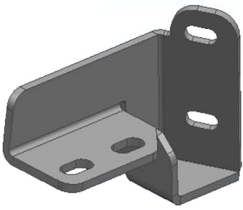


Contents

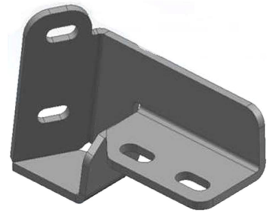
Qty	Description	Qty	Description
1	Revolution Bull Bar	16	10mm x 27mm OD x 3mm Flat Washers
1	Driver/Left Frame Bracket	12	10-1.5mm Nylon Locknuts
1	Driver/Left Mounting Bracket	4	10-1.5mm x 30mm Hex Bolts
1	Passenger/Right Frame Bracket	1	License Plate Relocation Kit, includes:
1	Passenger/Right Mounting Bracket	2	6mm x 18mm OD x 1.6mm Flat washer
1	LED Light Bar and Wiring Harness	2	6mm Hex nut
4	Bolt Assembly	1	Allen Wrench
4	10mm x 35mm Double Bolt Plates	4	M6-20 mm Button head allen bolt combo



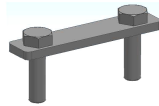
Driver/Left Mounting Bracket



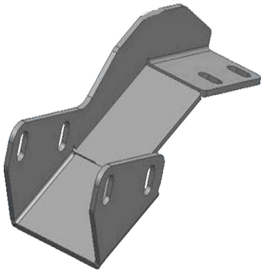
Revolution Bull Bar



Passenger/Right Mounting Bracket



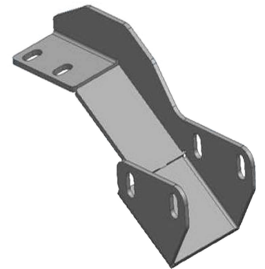
Bolt Plate



Driver/Left Frame Bracket



LED Light Bar



Passenger/Right Frame Bracket